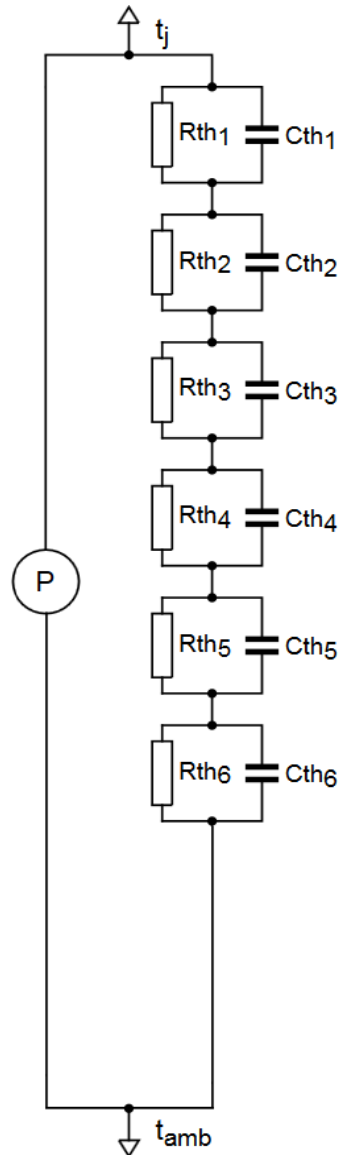


### SPICE thermal model

PSMN011-100YSF

Symbol	Parameter	Conditions	Min	Typ	Max	Unit
$R_{th(j-mb)}$	thermal resistance from junction to mounting base		-	-	0.99	K/W

$C_{th1}$	4.507E-04 F
$C_{th2}$	4.061E-04 F
$C_{th3}$	4.956E-04 F
$C_{th4}$	1.091E-03 F
$C_{th5}$	1.086E-02 F
$C_{th6}$	1.130E-02 F
$R_{th1}$	2.774E-04 $\Omega$
$R_{th2}$	3.124E-03 $\Omega$
$R_{th3}$	2.212E-02 $\Omega$
$R_{th4}$	6.669E-02 $\Omega$
$R_{th5}$	1.189E-01 $\Omega$
$R_{th6}$	7.788E-01 $\Omega$



Part: PSMN011-100YSF

Date: 25/4/2019

Model Rth 0.99 K/W