



# SOD962B

Leadless ultra small package; Reel pack, SMD, 7"; Q1/T1 standard product orientation; Orderable part number ending ,315 or YL; Ordering code (12NC) ending 315

Rev. 1 — 16 August 2017

Packing information

## 1 Packing method

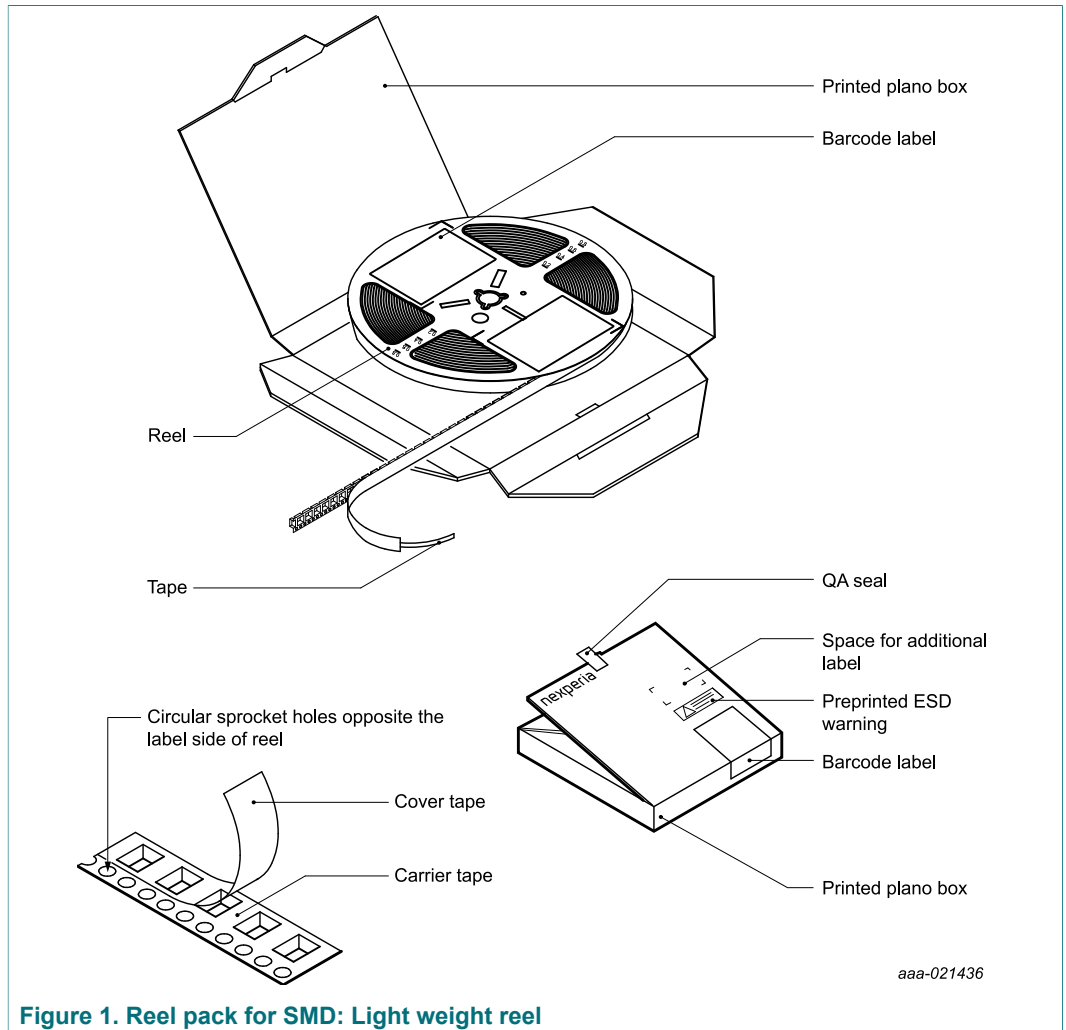


Figure 1. Reel pack for SMD: Light weight reel

Leadless ultra small package; Reel pack, SMD, 7"; Q1/T1 standard product orientation; Orderable part number ending ,315 or YL; Ordering code (12NC) ending 315

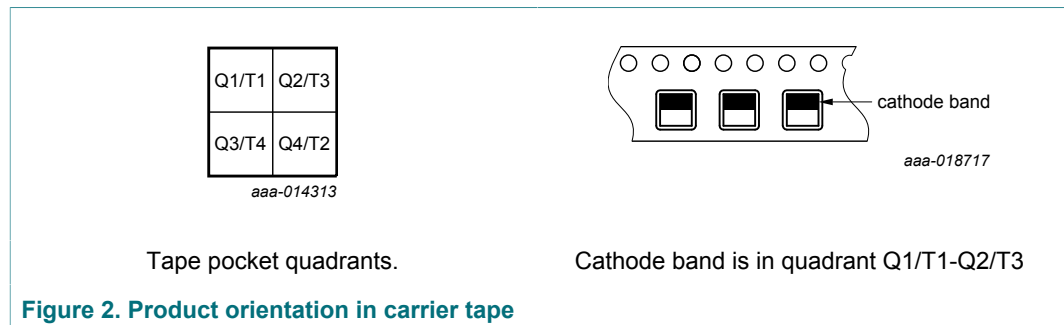
Table 1. Dimensions and quantities

Reel dimensions d × w (mm) <sup>[1]</sup>	SPQ/PQ (pcs) <sup>[2]</sup>	Reels per box	Outer box dimensions l × w × h (mm)
180 × 8	9 000	1	187 × 187 × 18

[1] d = reel diameter; w = tape width.

[2] Packing quantity dependent on specific product type. Please contact your local Nexperia representative for ordering.

## 2 Product orientation



## 3 Carrier tape dimensions

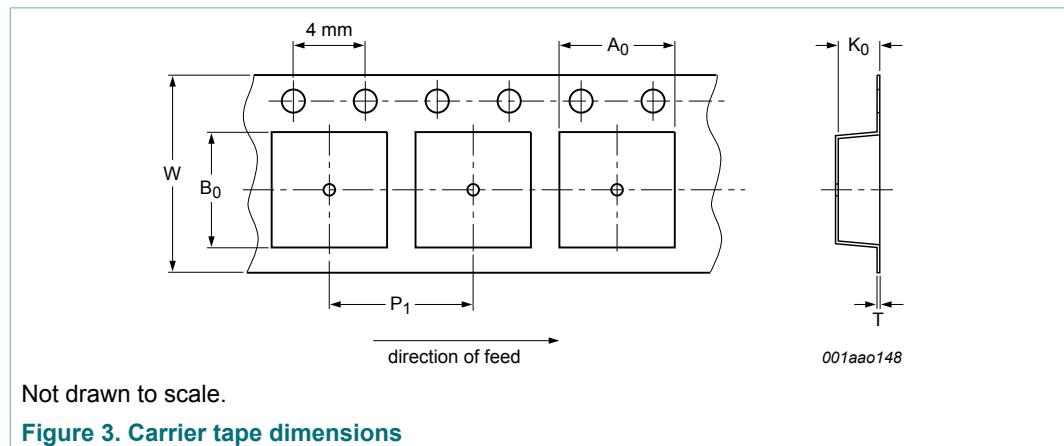


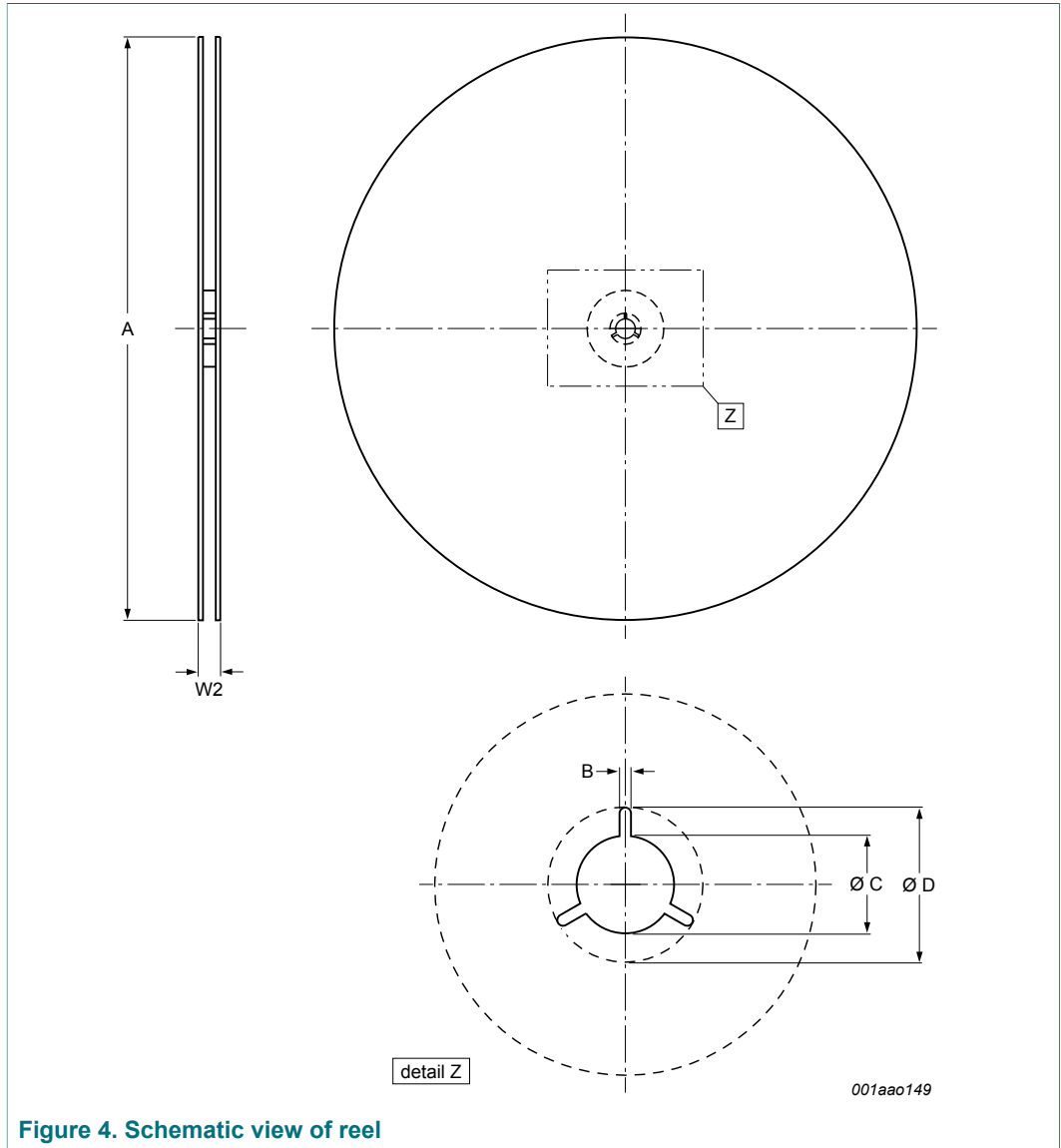
Table 2. Carrier tape dimensions

In accordance with IEC 60286-3.

A <sub>0</sub> (mm)	B <sub>0</sub> (mm)	K <sub>0</sub> (mm)	T (mm)	P <sub>1</sub> (mm)	W (mm)
0.34 ± 0.03	0.66 ± 0.03	0.24 ± 0.03	0.20 ± 0.05	2.00 ± 0.05	8.0 + 0.3 / - 0.1

Leadless ultra small package; Reel pack, SMD, 7"; Q1/T1 standard product orientation; Orderable part number ending ,315 or YL; Ordering code (12NC) ending 315

### 4 Reel dimensions



**Table 3. Reel dimensions**

*In accordance with IEC 60286-3.*

A [nom] (mm)	W2 [max] (mm)	B [min] (mm)	C [min] (mm)	D [min] (mm)
180	14.4	1.5	12.8	20.2

Leadless ultra small package; Reel pack, SMD, 7"; Q1/T1 standard product orientation; Orderable part number ending ,315 or YL; Ordering code (12NC) ending 315

## 5 Barcode label

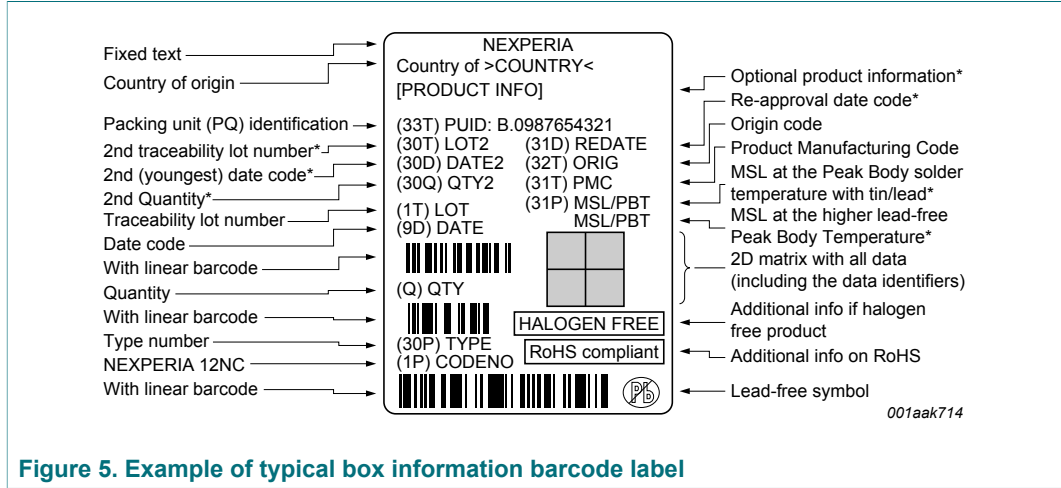


Figure 5. Example of typical box information barcode label

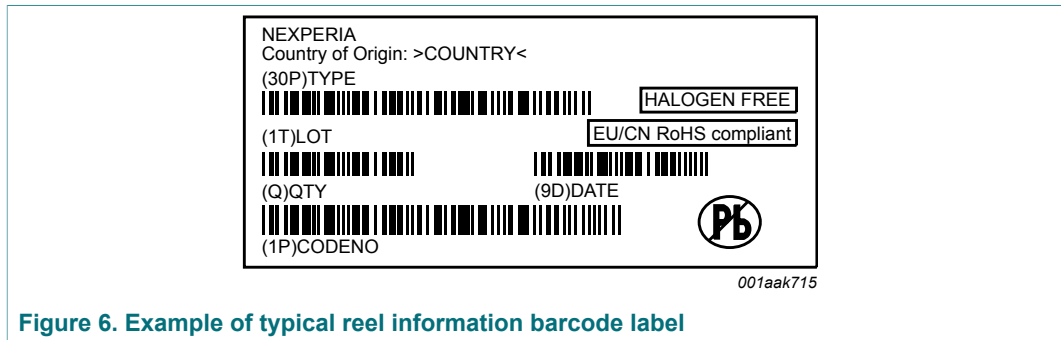


Figure 6. Example of typical reel information barcode label

Table 4. Barcode label dimensions

Box barcode label l × w (mm)	Reel barcode label l × w (mm)
100 × 75	36 × 75

Leadless ultra small package; Reel pack, SMD, 7"; Q1/T1 standard product orientation; Orderable part number ending ,315 or YL; Ordering code (12NC) ending 315

## 6 Revision history

Table 5. Revision history

Document ID	Release date	Packing document status	Change notice	Supersedes
SOD962B_315 v.1	2017-08-16	Packing information	-	-

---

Leadless ultra small package; Reel pack, SMD, 7"; Q1/T1 standard product orientation; Orderable part number ending ,315 or YL; Ordering code (12NC) ending 315

## Contents

---

1	Packing method .....	1
2	Product orientation .....	2
3	Carrier tape dimensions .....	2
4	Reel dimensions .....	3
5	Barcode label .....	4
6	Revision history .....	5

---

Please be aware that important notices concerning this document and the product(s) described herein, have been included in section 'Legal information'.

---

© Nexperia B.V. 2017.

All rights reserved.

For more information, please visit: <http://www.nexperia.com>

For sales office addresses, please send an email to: [salesaddresses@nexperia.com](mailto:salesaddresses@nexperia.com)

Date of release: 16 August 2017