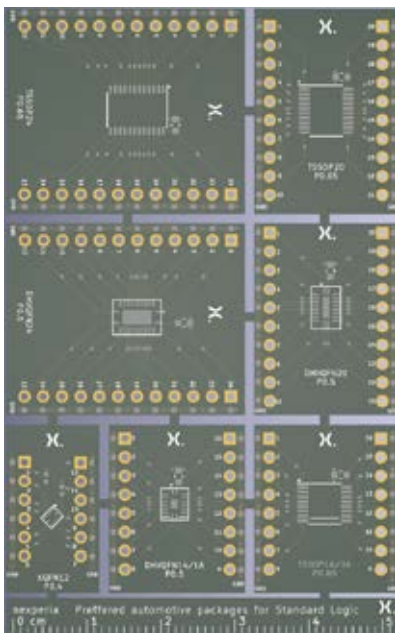


Dual In-line Logic Footprint Adapter Boards



By translating from a package to a DIL format, these boards are designed to simplify the evaluation of Nexperia logic devices by offering several package footprints.

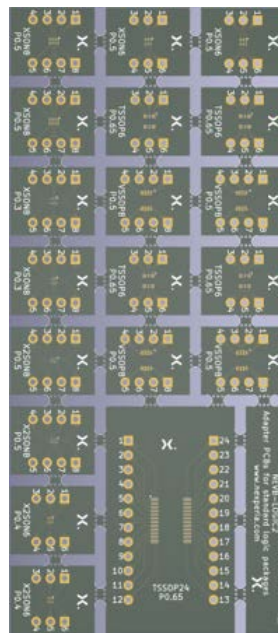
How to use this plug and play solution? Identify the package you will be using, place the device in the footprint and solder the device down to start evaluating.



NEVB-LOGIC01

Compatible with:

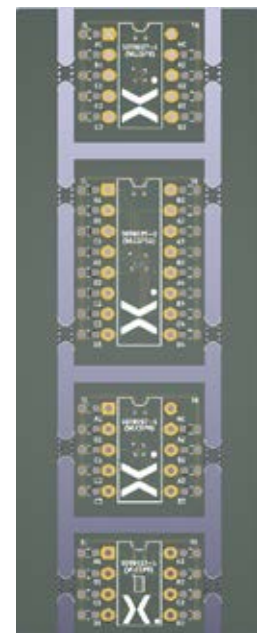
- › TSSOP14/16
- › TSSOP20
- › TSSOP24
- › DHVQFN14/16
- › DHVQFN20
- › DHVQFN24
- › QFN12



NEVB-LOGIC02

Compatible with:

- › XSON8 p0.5
- › XSON8 p0.3
- › X2SON8
- › X2SON6
- › XSON6
- › TSSOP6
- › VSSOP8
- › TSSOP24



NEVB-LOGIC03

Compatible with:

- › WLCSP8
- › WLCSP16
- › WLCSP9 (SOT8027)
- › WLCSP9 (SOT8057)

Orderable on Nexperia Extranet.
More information on Nexperia logic devices at nexperia.com/logic