



# NXF6501-Q100

Low-noise, 1.2 A transformer driver for isolated power supplies

Rev. 1 — 17 September 2024

Product data sheet

## 1. General description

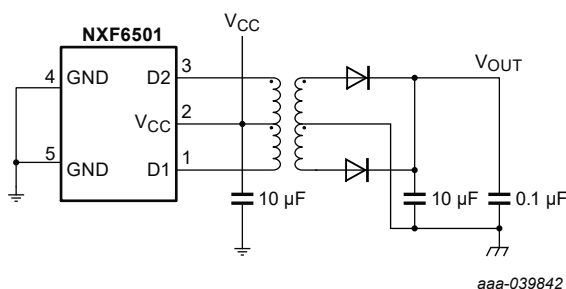
The NXF6501-Q100 is a specialized push-pull transformer driver that is designed for isolated power supplies in small form factors. This driver is capable of driving low-profile, center-tapped transformers from a 2.25 V to 5.5 V DC power supply, while achieving ultra-low noise and EMI using slew rate control and Spread Spectrum Clocking (SSC).

The NXF6501-Q100 includes internal protection features such as current limiting, undervoltage lockout, thermal shutdown, and break-before-make circuitry, ensuring the device maintains safe limits. The device also includes a soft-start feature that prevents high inrush current during power-up with large load capacitors.

The NXF6501-Q100 is constructed using an oscillator and a gate drive circuit that produces complementary output signals to drive ground-referenced N-channel power switches. These two complementary 1.2 A power-MOSFET switches can be used to provide >6 W power.

The NXF6501-Q100 410 kHz internal oscillator is for applications that require higher efficiency and smaller transformers. The NXF6501-Q100 is available in a small 5 pin SOT8098-1 package and is characterized for operation within a temperature range of -55 °C to 125 °C.

This product has been qualified to the Automotive Electronics Council (AEC) standard Q100 (Grade 1) and is suitable for use in automotive applications.



## 2. Features and benefits

- Automotive product qualification in accordance with AEC-Q100 (Grade 1)
  - Specified from -55 °C to +125 °C
- Push-pull driver for transformers, optimized for low EMI:
  - Slew-rate control
  - Spread Spectrum Clocking (SSC)
- Wide input voltage range: 2.25 V to 5.5 V
- High output drive: 1.2 A at 5 V supply
- Low R<sub>ON</sub> 0.2 Ω maximum at 5 V supply
- Internal switching frequency: 410 kHz
- 1.7 A output current limit
- Thermal shutdown protection
- Soft-start to reduce In-rush current
- ESD protection:
  - HBM: ANSI/ESDA/JEDEC JS-001 class 3A exceeds 6000 V
  - CDM: ANSI/ESDA/JEDEC JS-002 class C3 exceeds 1500 V
- Small 5 pin SOT8098-1 (TSOT23-5) package

## 3. Applications

- Isolated power supply for automotive and industrial applications:
  - CAN, RS-485, RS-422, RS-232, SPI, I<sup>2</sup>C, low-power LAN
- Low-noise isolated USB supplies
- Process control
- Telecom supplies
- Radio supplies
- Distributed supplies
- Medical instruments
- Precision instruments
- Low-noise filament supplies
- Isolated power supplies for automotive (AEC-Q100)
  - Traction inverter and motor control
  - DC-DC converter
  - Battery management system
  - On-board charger

### 4. Ordering information

Table 1. Ordering information

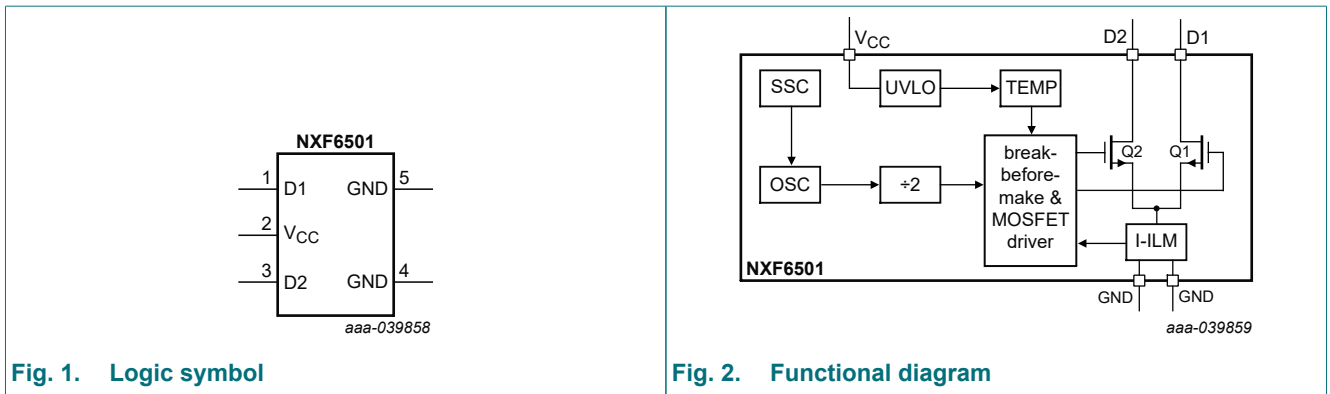
Type number	Package			
	Temperature range	Name	Description	Version
<a href="#">NXF6501DC-Q100</a>	-55 °C to +125 °C	TSOT23-5	plastic, surface-mounted package; 5 leads; 0.95 mm pitch; 2.9 mm x 1.6 mm x 1.1 mm body	<a href="#">SOT8098-1</a>

### 5. Marking

Table 2. Marking

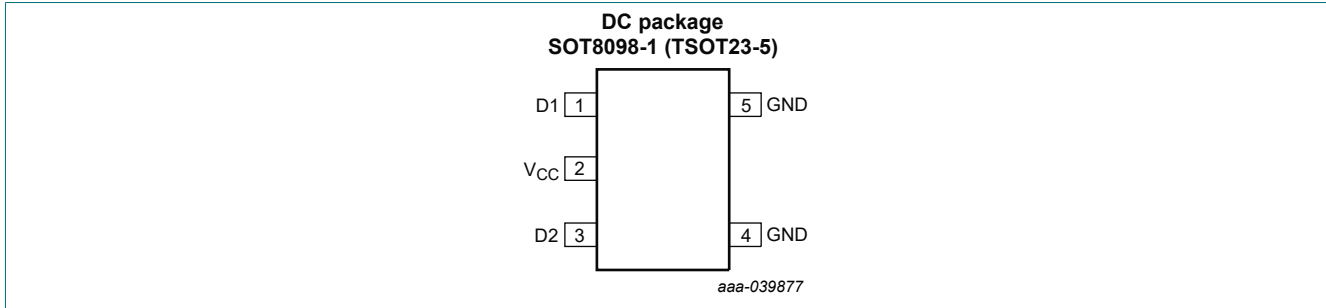
Type number	Marking code
NXF6501DC-Q100	N01

### 6. Functional diagram



## 7. Pinning information

### 7.1. Pinning information



### 7.2. Pin description

Table 3. Pin description

Symbol	Pin	Type	Description
D1	1	O	Open-drain output of the first power MOSFETs. Usually connected to one of the outer terminals of the center tap transformer. Because large currents flow through this pin, its external trace should be kept short.
V <sub>CC</sub>	2	P	This is the device supply pin. It should be bypassed with a 4.7 $\mu$ F or greater, low ESR capacitor. When $V_{CC} \leq 2.25$ V, an internal undervoltage lockout circuit trips and turns both outputs off.
D2	3	O	Open-drain output of the second power MOSFETs. Usually connected to the other one of the outer terminals of the center tap transformer. Because large currents flow through this pin, its external trace should be kept short.
GND	4, 5	G	GND is connected to the source of the power MOSFET switches via an internal sense circuit. Because large currents flow through it, the GND terminals must be connected to a low-inductance quality ground plane.

## 8. Functional description

### 8.1. Overview

The NXF6501-Q100 is a specialized transformer driver designed to cater to low-cost, small form-factor, and isolated DC-DC converters. It utilizes push-pull topology to provide efficient power conversion to such systems. The device includes an oscillator that provides a signal to a gate-drive circuit, which generates two complementary output signals that control the switching of two output transistors alternatively.

The gate-drive circuit consists of a frequency divider and a break-before-make ( $t_{b-m}$ ) logic, which work together to ensure the efficient and safe operation of the device. The frequency divider reduces the output frequency of the oscillator by two, allowing the device to operate at a frequency that is appropriate for its intended use.

### 8.2. Functional block diagram

The NXF6501-Q100 functional block diagram is shown below:

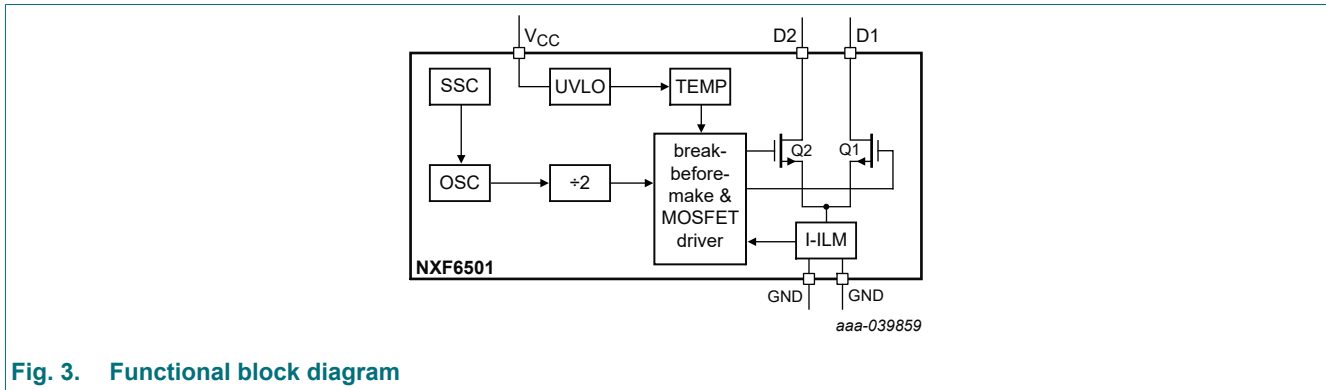


Fig. 3. Functional block diagram

### 8.3. Feature description

#### Push-pull converter

A push-pull converter is a type of DC-DC converter that uses a transformer with a center-tap to transfer power from the primary to the secondary. The converter uses two switches, Q1 and Q2, to alternately switch current through the two halves of the transformer primary. (see Fig. 4 below).

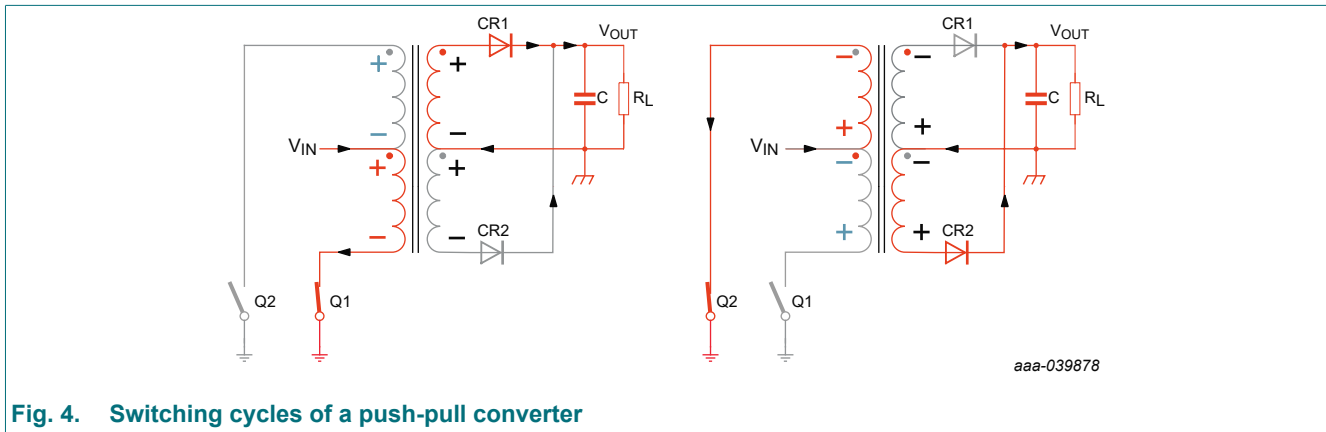


Fig. 4. Switching cycles of a push-pull converter

When Q1 conducts, it drives a current through the lower half of the primary to ground, creating a negative voltage potential at the lower primary end with respect to the  $V_{IN}$  potential at the center-tap. At the same time, the voltage across the upper half of the primary is such that the upper primary end is positive with respect to the center-tap to maintain the previously established current flow through Q2, which is now in a high-impedance state.

The two voltage sources, each equaling  $V_{IN}$ , appear in series and cause a voltage potential at the open end of the primary of  $2 \times V_{IN}$  with respect to ground. Per dot convention, the same voltage polarities that occur at the primary also occur at the secondary. The positive potential of the upper secondary end therefore forward biases diode CR1. The secondary current starting from the upper secondary end flows through CR1, charges capacitor C, and returns through the load impedance  $R_L$  back to the center-tap.

During the off-time of Q1, Q2 conducts, and the current flow in the primary is reversed. This creates a negative voltage potential at the upper primary end with respect to the center-tap, and a positive voltage potential at the lower primary end. The same voltage polarities occur at the secondary, and the lower secondary end is now forward biased, causing the secondary current to flow through CR2, charging capacitor C, and returning through the load impedance  $R_L$  back to the center-tap.

## Low-noise, 1.2 A transformer driver for isolated power supplies

By alternately switching current through the two halves of the transformer primary, the push-pull converter can step up or step down the input voltage to the desired output voltage. The capacitor C acts as a filter, smoothing out the output voltage ripple.

During the operation of a push-pull converter, when Q2 conducts, Q1 turns off and the voltage polarities at both primary and secondary sides of the transformer reverse. The lower end of the primary now presents an open end with a voltage potential of  $2 \times V_{IN}$  against ground. Consequently, diode CR2 becomes forward biased, while diode CR1 becomes reverse biased. As a result, the current flows from the lower end of the secondary through CR2, charges the capacitor, and then returns through the load impedance  $R_L$  to the center-tap of the transformer. This completes one cycle of operation of the push-pull converter, and the process repeats for subsequent cycles.

## Core magnetization

Fig. 5 depicts the magnetizing curve for an ideal push-pull converter, where B and H represent magnetic flux density and field strength, respectively. During Q1 conduction, the magnetic flux moves from point A to A', and during Q2 conduction, it moves back to point A. The difference in flux density is proportional to the product of the primary voltage,  $V_P$ , and the on-time,  $t_{ON}$ . This V-t product determines the core magnetization during each switching cycle. Any imbalance in the V-t products of both phases cause an offset from the B-H curve's origin, leading the transformer towards saturation gradually. It is necessary to maintain balance in push-pull converters for optimal efficiency and reliability, which can be achieved by adjusting the primary voltage, duty cycle, or using a larger core transformer. By carefully designing and selecting the transformer and its components, reliable and efficient operation can be ensured over a wide range of load conditions.

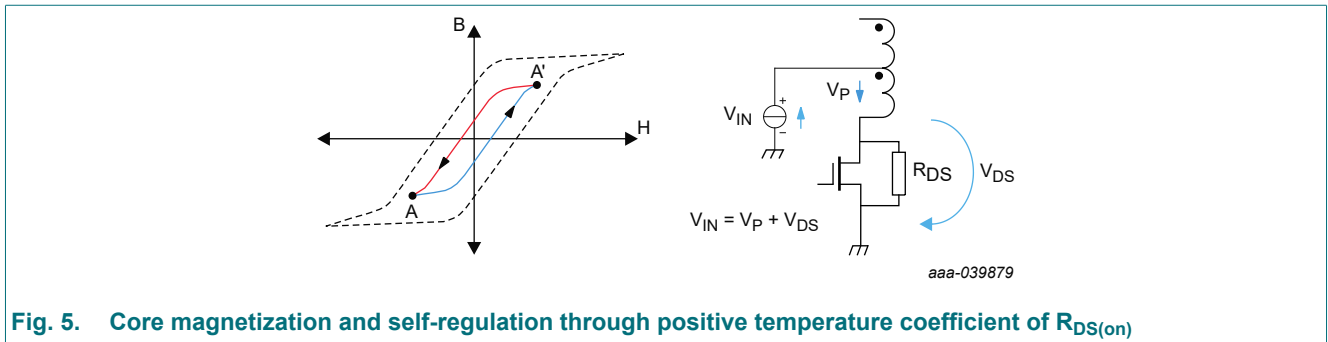


Fig. 5. Core magnetization and self-regulation through positive temperature coefficient of  $R_{DS(on)}$

## 8.4. Functional modes

## Start-up mode

The internal oscillator of a circuit initiates operation when the supply voltage at  $V_{CC}$  ramps up to 2.25 V. The output stage then starts switching, but the amplitude of the drain signals at D1 and D2 is not yet at its maximum level.

## Soft-Start mode

The NXF6501-Q100 device is designed to support the soft-start feature. When the power is turned on or the EN pin changes from Low to High, the gate drive of the output power-MOSFET gradually increases from 0 V to  $V_{CC}$  over a period of time defined by  $t_{SS}$  parameter in Table 9. This gradual increase in gate drive prevents high inrush current from  $V_{CC}$  while charging large secondary side decoupling capacitors. It also prevents overshoot in secondary voltage during power-up. Soft-start is an essential feature for power supplies to ensure reliable and stable operation. By gradually increasing the gate drive, the circuit can avoid sudden current spikes that may damage the MOSFET or other components in the circuit. Moreover, the soft-start feature prevents overshoot in secondary voltage, which could cause damage to sensitive components connected to the power supply. The NXF6501-Q100 device is well-suited for applications that require soft start, making them an ideal choice for power supply designs where reliability and stability are critical factors.

## Operating mode

When the device supply has reached its nominal value 2.25 V, the oscillator is fully operating. However, variations over supply voltage and operating temperature can vary the switching frequencies at D1 and D2.

### Spread spectrum clocking (SSC)

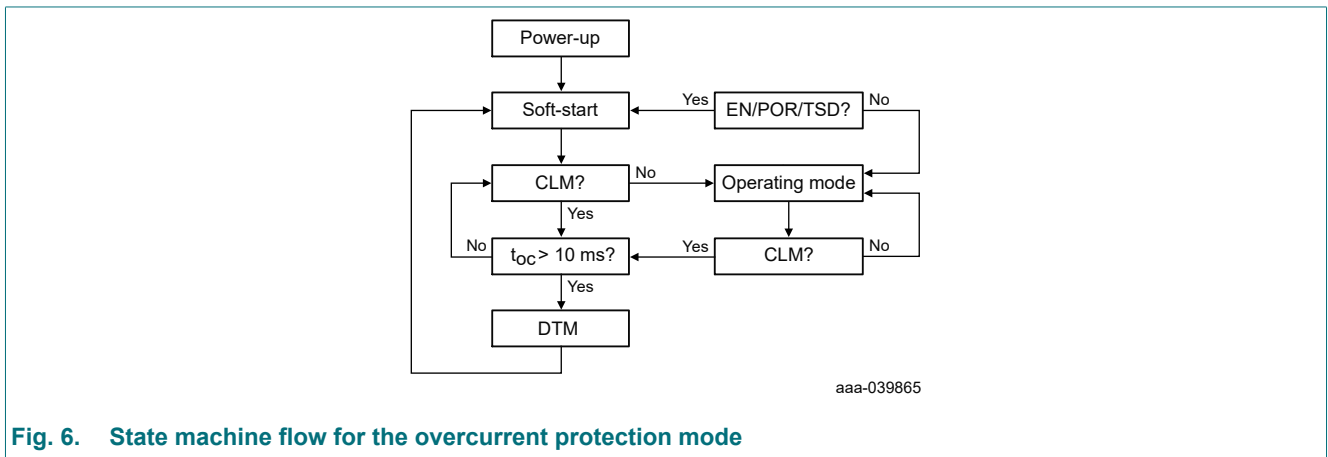
In high current switching power supplies, radiated emissions are a significant issue to consider. To mitigate this, the NXF6501-Q100 employs a technique known as spread spectrum clocking, which involves modulating the internal clock to spread the emitting energy over multiple frequency bins. This feature significantly enhances the emissions performance of the entire power supply block, which relieves the system designer of a major concern in designing an isolated power supply.

### Overcurrent protection mode (OPM)

The NXF6501-Q100 incorporates a protective mechanism against overcurrent, designed to safeguard the system from enduring permanent damage due to excessive current situations. Upon detecting an overcurrent scenario where the current surpasses the predefined threshold ( $I_{th(DET)}$ ) while flowing through the D1 and D2 MOSFET, the NXF6501-Q100 initiates its current limit mode (CLM). This mode regulates the pulse width of the D1 and D2 to reduce the average current passing through them, thus mitigating the risk of damage.

Once the overcurrent condition subsides, the NXF6501-Q100 seamlessly returns to its normal operating mode. However, if the overcurrent persists beyond 10 milliseconds ( $t_{oc}$ ), the NXF6501-Q100 shifts into dead time mode (DTM). In this mode, both D1 and D2 are deactivated to prevent any harm to the system, or its components caused by the prolonged overcurrent situation.

Following the 10 millisecond (typical) dead time, the NXF6501-Q100 initiates a soft start mode before transitioning back into its standard operating mode. [Fig. 6](#) shows the state machine flow for the overcurrent protection mode.



**Fig. 6. State machine flow for the overcurrent protection mode**

## 9. Limiting values

**Table 4. Limiting values**

In accordance with the Absolute Maximum Rating System (IEC 60134). Voltages are referenced to GND (ground = 0 V).

Symbol	Parameter	Conditions	Min	Max	Unit
V <sub>CC</sub>	supply voltage		-0.5	6	V
V <sub>O</sub>	output voltage	pin D1, D2	-	17	V
I <sub>O(peak)</sub>	peak output current	pin D1, D2	-	20	A
T <sub>J</sub>	maximum junction temperature		-55	150	°C
T <sub>stg</sub>	storage temperature		-65	150	°C

## 10. ESD ratings

**Table 5. ESD ratings**

Symbol	Parameter	Conditions	Value	Unit
V <sub>ESD</sub>	electrostatic discharge voltage	HBM: ANSI/ESDA/JEDEC JS-001 class 3A	±6000	V
		CDM: ANSI/ESDA/JEDEC JS-002 class C3	±1500	V

## 11. Recommended operating conditions

**Table 6. Recommended operating conditions**

Symbol	Parameter	Conditions	Min	Max	Unit
V <sub>CC</sub>	supply voltage		2.25	5.5	V
I <sub>O</sub>	output current	pin D1, D2			
		2.25 V ≤ V <sub>CC</sub> ≤ 2.8 V	-	0.8	A
		2.8 V < V <sub>CC</sub> ≤ 5.5 V	-	1.2	A
T <sub>amb</sub>	ambient temperature		-55	125	°C

## 12. Thermal characteristics

**Table 7. Thermal information**

The thermal data is based on the JEDEC standard high K profile, JESD 51-7. Two-signal, two-plane, four-layer board with 2-oz. Copper. The Copper pad is soldered to the thermal land pattern. Also, correct attachment procedure must be incorporated

Symbol	Parameter	SOT8098-1 (TSOT23-5)	Unit
R <sub>θJA</sub>	Junction-to-ambient thermal resistance	130	°C/W
R <sub>θJC(top)</sub>	Junction-to-case (top) thermal resistance	121.1	°C/W
R <sub>θJB</sub>	Junction-to-board thermal resistance	37.9	°C/W
Ψ <sub>JT</sub>	Junction-to-top characterization parameter	12.3	°C/W
Ψ <sub>JB</sub>	Junction-to-board characterization parameter	36	°C/W
R <sub>θJC(bottom)</sub>	Junction-to-case(bottom) thermal resistance	N/A	°C/W

### 13. Electrical characteristics

**Table 8. Electrical characteristics**

Voltages are referenced to GND (ground = 0 V).

Symbol	Parameter	Conditions	T <sub>amb</sub> = -55 °C to +125 °C			Unit
			Min	Typ[1]	Max	
<b>Supply voltage</b>						
I <sub>CC</sub>	supply current	2.25 V ≤ V <sub>CC</sub> ≤ 5.5 V; R <sub>L</sub> = 50 Ω [2]	-	1.56	2.3	mA
I <sub>LI</sub>	input leakage current	pins D1, D2; D1, D2 = V <sub>CC</sub>	-	0.1	-	μA
UVLO+	positive-going UVLO threshold		-	-	2.25	V
UVLO-	negative-going UVLO threshold		1.7	-	-	V
UVLO <sub>(hys)</sub>	UVLO threshold hysteresis		-	0.3	-	V
<b>CLK</b>						
f <sub>startup</sub>	start-up frequency		-	300	-	kHz
f <sub>SW</sub>	switching frequency	pins D1, D2				
		V <sub>CC</sub> = 3.3 V ±10 %	250	360	550	kHz
		V <sub>CC</sub> = 5 V ±10 %	300	410	620	kHz
<b>Output stage</b>						
Δt <sub>ON</sub>	average ON time mismatch	mismatch between D1 and D2; R <sub>L</sub> = 50 Ω	-	0	-	%
R <sub>ON</sub>	ON resistance	output switch ON resistance; see Fig. 9				
		V <sub>CC</sub> = 5 V, I <sub>D1</sub> , I <sub>D2</sub> = 1 A	-	0.16	0.2	Ω
		V <sub>CC</sub> = 2.25 V, I <sub>D1</sub> , I <sub>D2</sub> = 0.5 A	-	0.21	0.4	Ω
V <sub>SR</sub>	slew rate voltage	pin D1, D2; R <sub>L</sub> = 50 Ω; see Fig. 9	-	155	-	V/μs
I <sub>th(DET)</sub>	current detect threshold	2.8 V < V <sub>CC</sub> ≤ 5.5 V	-	2.2	-	A
		2.25 V < V <sub>CC</sub> ≤ 2.8 V	-	1.42	-	A
I <sub>LIM(AV)</sub>	average current limit	2.8 V < V <sub>CC</sub> ≤ 5.5 V	-	404	-	mA
		2.25 V ≤ V <sub>CC</sub> ≤ 2.8 V	-	224	-	mA

[1] Typical values are measured at T<sub>amb</sub> = 25 °C and V<sub>CC</sub> = 5 V.

[2] Does not include load current.



## 14. Dynamic characteristics

**Table 9. Dynamic characteristics**

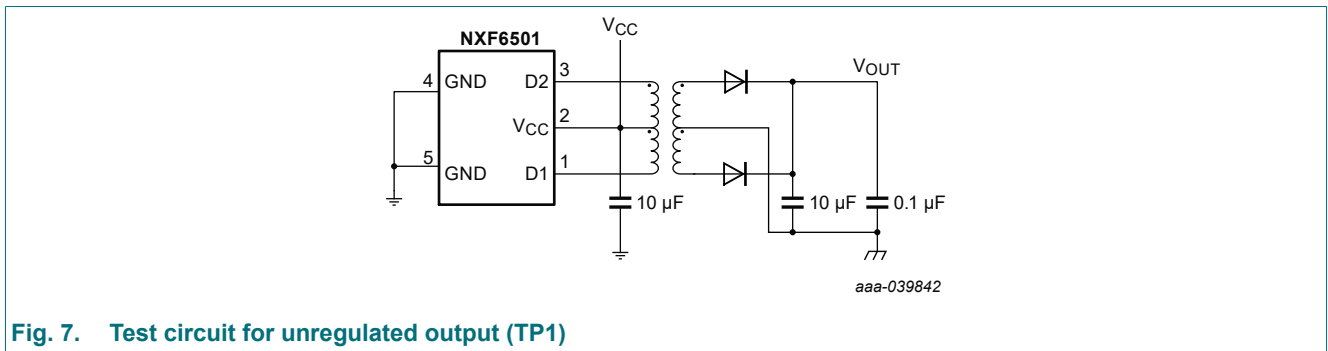
At recommended operating conditions; voltages are referenced to GND (ground = 0 V);

For timing diagrams and test circuit see [Section 14.1](#); See also additional graphs in [Section 14.2](#).

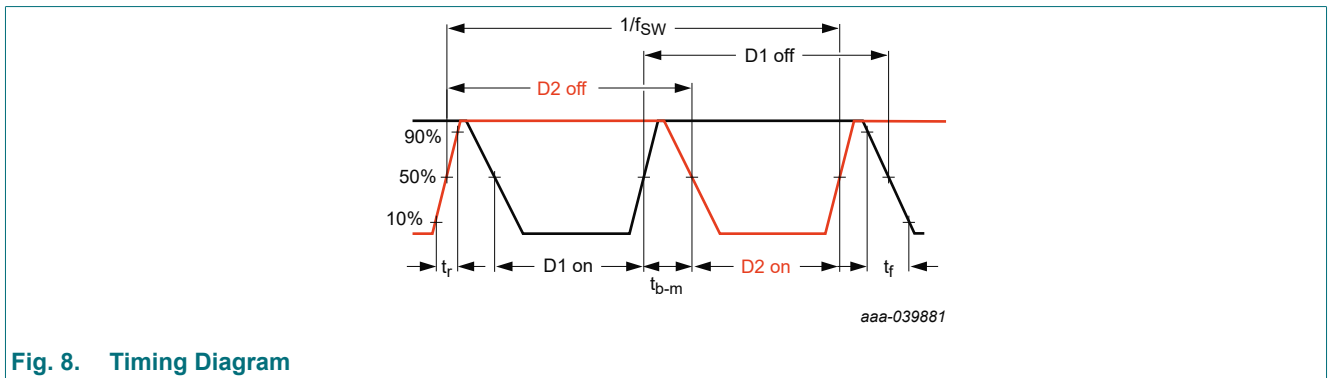
Symbol	Parameter	Conditions	T <sub>amb</sub> = -55 °C to +125 °C			Unit
			Min	Typ[1]	Max	
<b>Output stage</b>						
t <sub>b-m</sub>	break-before-make time	measured as voltage; R <sub>L</sub> = 50 Ω; see <a href="#">Fig. 9</a>	-	90	-	ns
<b>Soft-start</b>						
t <sub>SS</sub>	soft-start time	10% to 90% transition time on V <sub>OUT</sub> with transformer C <sub>LOAD</sub> = 40 μF; R <sub>L</sub> = 5 Ω	-	5	-	ms
t <sub>SS(delay)</sub>	soft-start time delay	from power up to 90% transition time on V <sub>OUT</sub> with transformer C <sub>LOAD</sub> = 40 μF; R <sub>L</sub> = 5 Ω	-	8.5	-	ms

[1] Typical values are measured at T<sub>amb</sub> = 25 °C and V<sub>CC</sub> = 5 V.

### 14.1. Waveforms and test circuits



**Fig. 7. Test circuit for unregulated output (TP1)**



**Fig. 8. Timing Diagram**

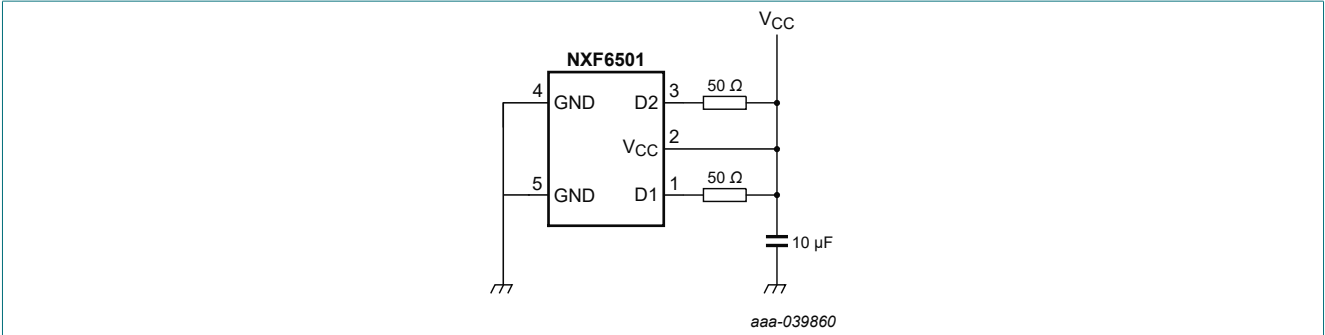


Fig. 9. Test circuit for average switching frequency, slew rate voltage, ON resistance and break-before-make time

### 14.2. Typical characteristics NXF6501-Q100

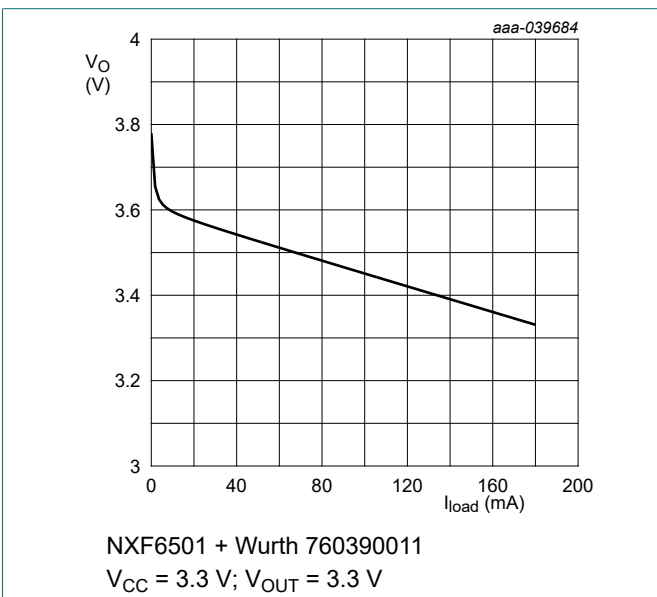


Fig. 10. Output voltage versus load current

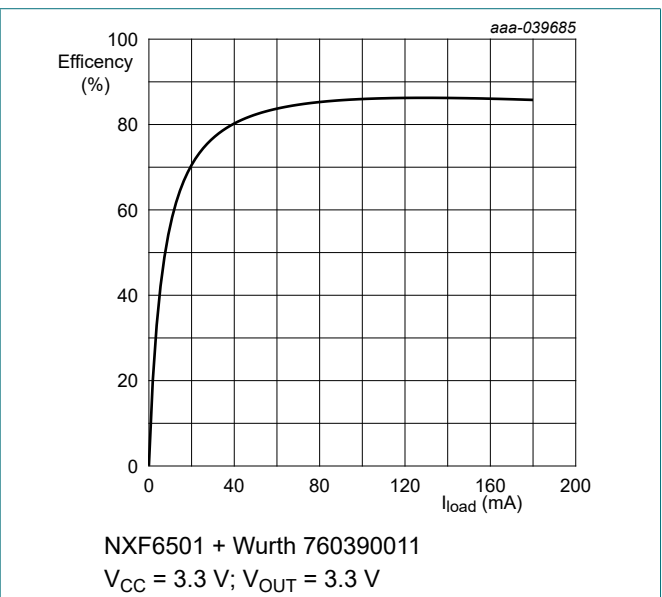


Fig. 11. Efficiency versus load current

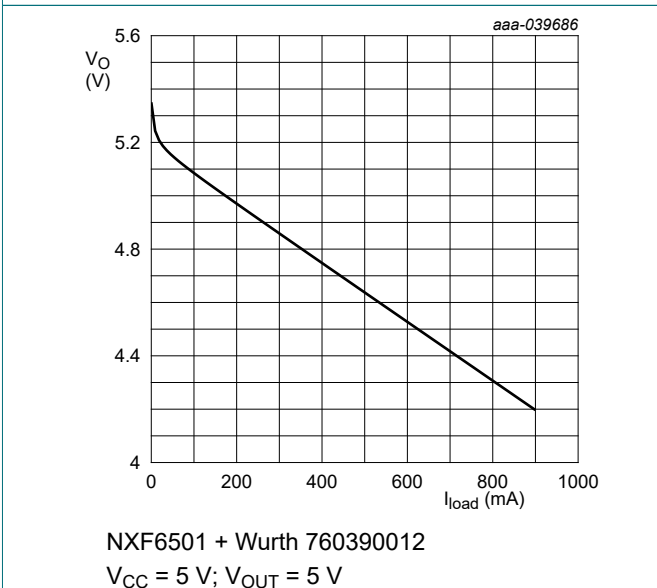


Fig. 12. Output voltage versus load current

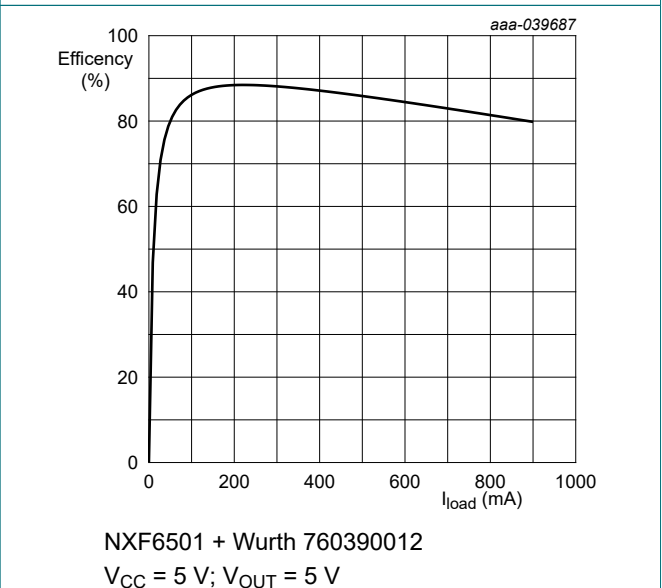
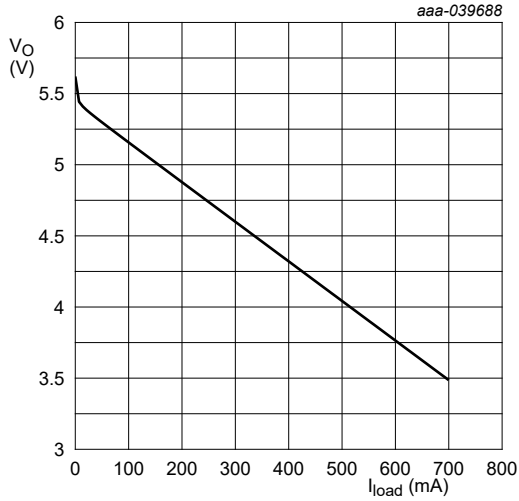
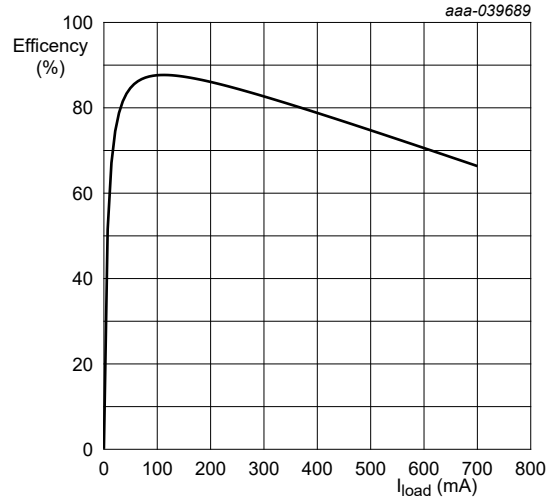


Fig. 13. Efficiency versus load current



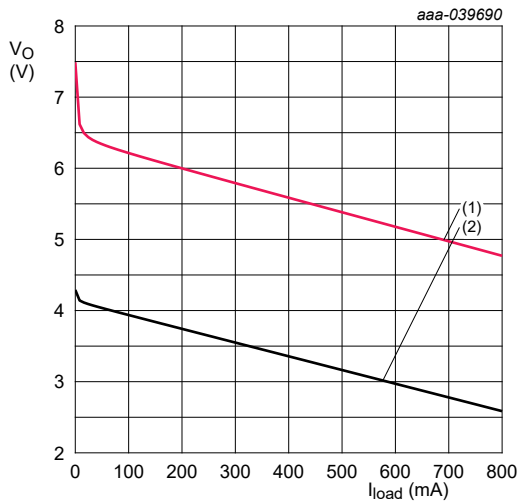
NXF6501 + Würth 760390013  
 $V_{CC} = 3.3\text{ V}$ ;  $V_{OUT} = 5\text{ V}$

Fig. 14. Output voltage versus load current



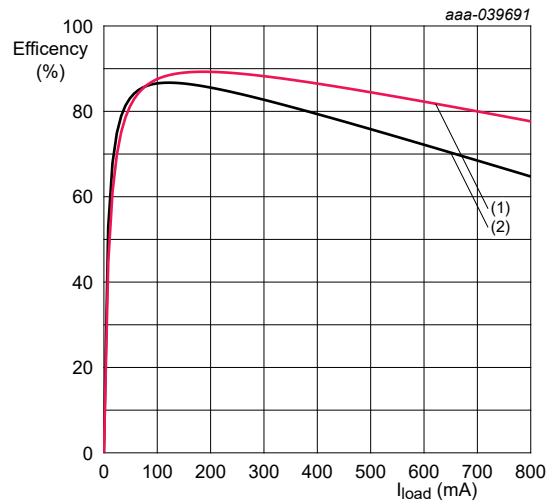
NXF6501 + Würth 760390013  
 $V_{CC} = 3.3\text{ V}$ ;  $V_{OUT} = 5\text{ V}$

Fig. 15. Efficiency versus load current



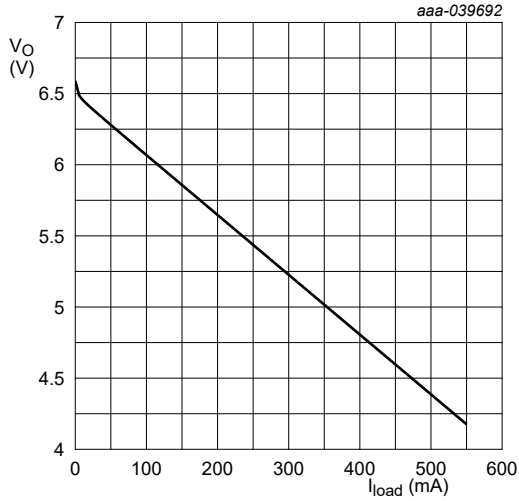
NXF6501 + Würth 760390014  
 (1)  $V_{CC} = 5\text{ V}$ ;  $V_{OUT} = 5\text{ V}$   
 (2)  $V_{CC} = 3.3\text{ V}$ ;  $V_{OUT} = 3.3\text{ V}$

Fig. 16. Output voltage versus load current



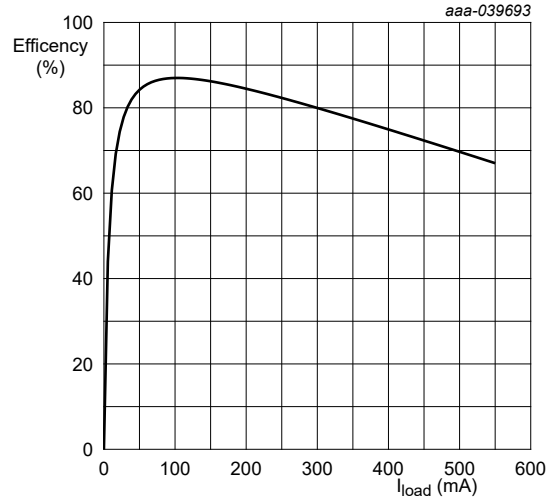
NXF6501 + Würth 760390014  
 (1)  $V_{CC} = 5\text{ V}$ ;  $V_{OUT} = 5\text{ V}$   
 (2)  $V_{CC} = 3.3\text{ V}$ ;  $V_{OUT} = 3.3\text{ V}$

Fig. 17. Efficiency versus load current



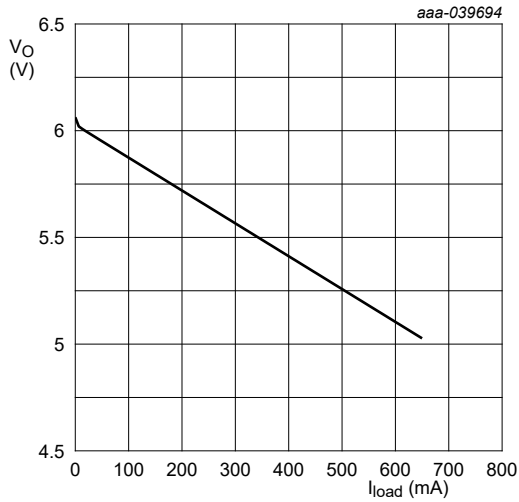
NXF6501 + Würth 760390015  
 $V_{CC} = 3.3 \text{ V}$ ;  $V_{OUT} = 5 \text{ V}$

Fig. 18. Output voltage versus load current



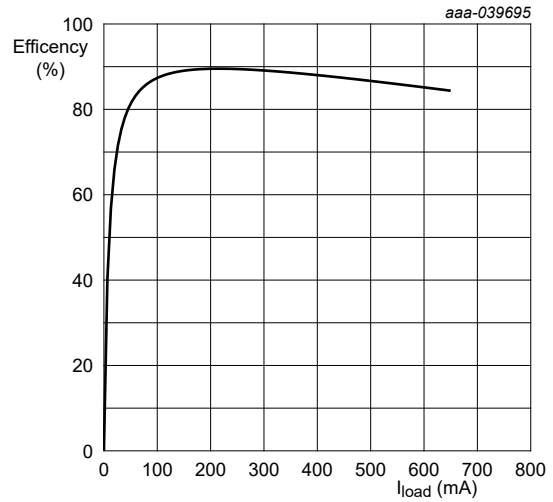
NXF6501 + Würth 760390015  
 $V_{CC} = 3.3 \text{ V}$ ;  $V_{OUT} = 5 \text{ V}$

Fig. 19. Efficiency versus load current



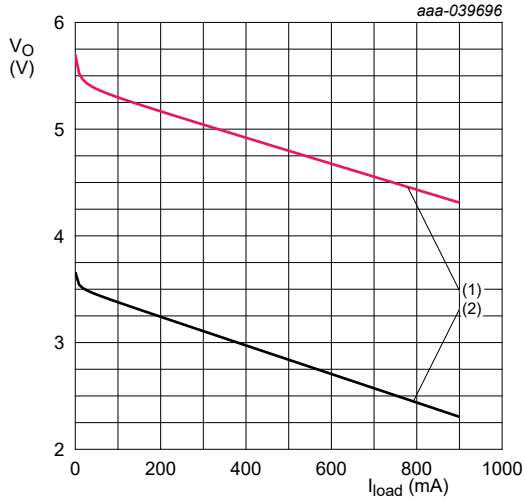
NXF6501 + Würth 750313710  
 $V_{CC} = 5 \text{ V}$ ;  $V_{OUT} = 6 \text{ V}$

Fig. 20. Output voltage versus load current



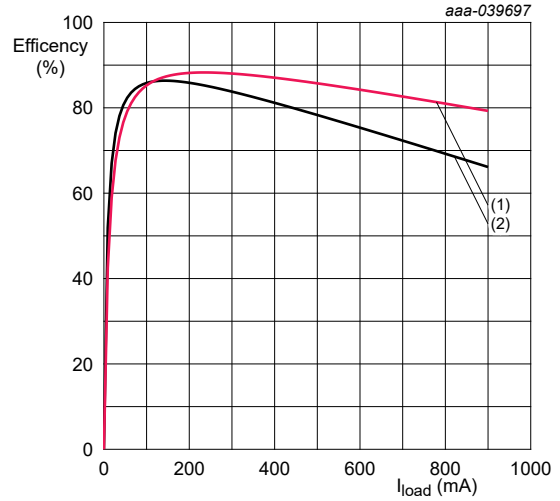
NXF6501 + Würth 750313710  
 $V_{CC} = 5 \text{ V}$ ;  $V_{OUT} = 3.3 \text{ V}$

Fig. 21. Efficiency versus load current



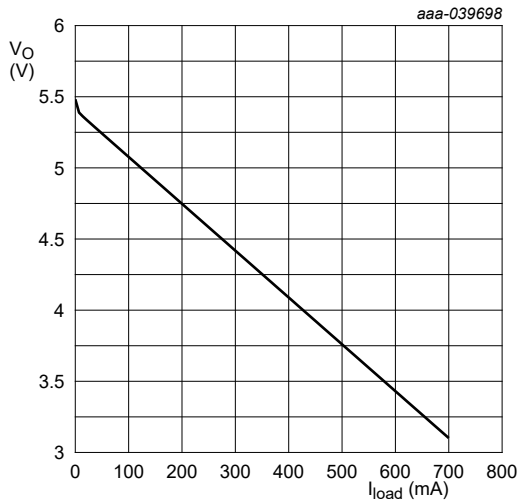
NXF6501 + Würth 750313734  
 (1)  $V_{CC} = 5\text{ V}$ ;  $V_{OUT} = 5\text{ V}$   
 (2)  $V_{CC} = 3.3\text{ V}$ ;  $V_{OUT} = 3.3\text{ V}$

Fig. 22. Output voltage versus load current



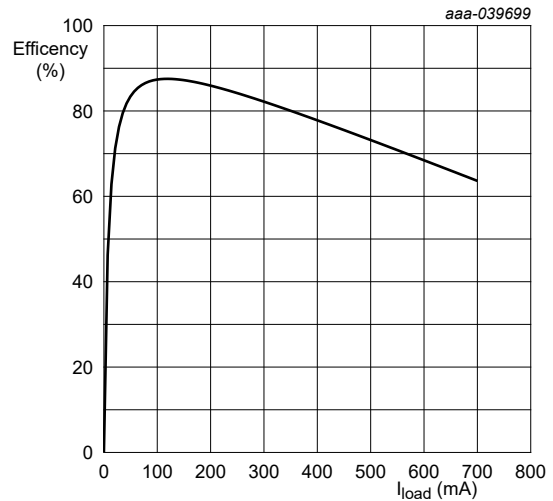
NXF6501 + Würth 750313734  
 (1)  $V_{CC} = 5\text{ V}$ ;  $V_{OUT} = 5\text{ V}$   
 (2)  $V_{CC} = 3.3\text{ V}$ ;  $V_{OUT} = 3.3\text{ V}$

Fig. 23. Efficiency versus load current



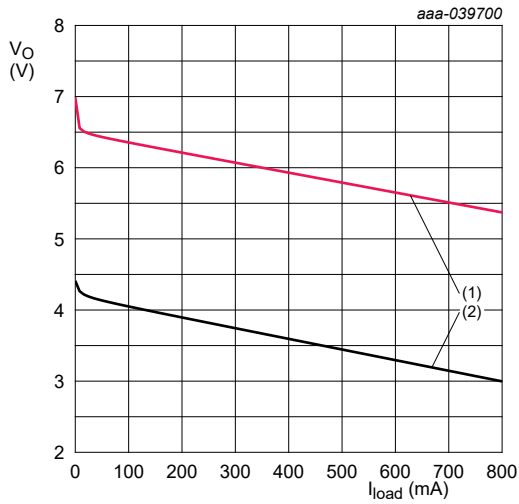
NXF6501 + Würth 750313769  
 $V_{CC} = 3.3\text{ V}$ ;  $V_{OUT} = 5\text{ V}$

Fig. 24. Output voltage versus load current



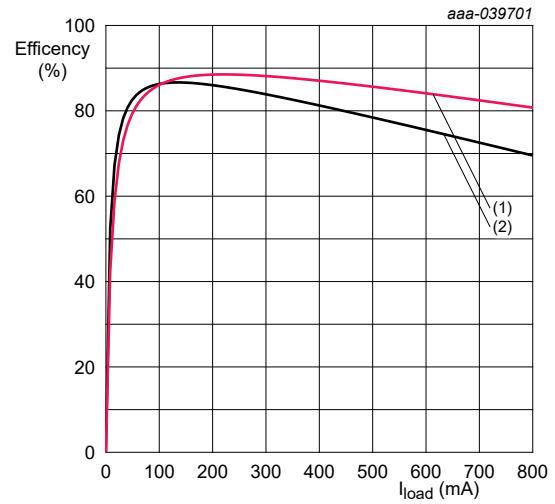
NXF6501 + Würth 750313769  
 $V_{CC} = 3.3\text{ V}$ ;  $V_{OUT} = 5\text{ V}$

Fig. 25. Efficiency versus load current



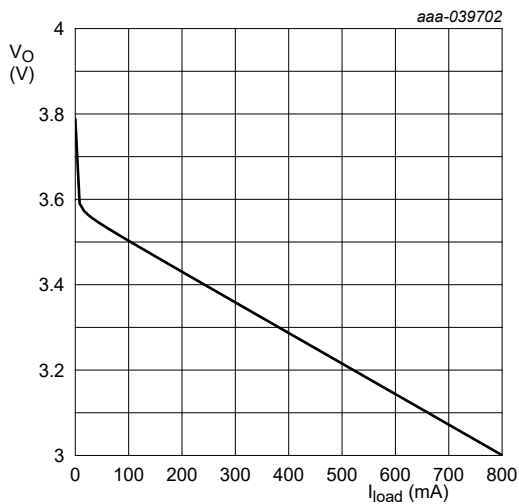
NXF6501 + Würth 750313638  
 (1)  $V_{CC} = 5\text{ V}; V_{OUT} = 5\text{ V}$   
 (2)  $V_{CC} = 3.3\text{ V}; V_{OUT} = 3.3\text{ V}$

Fig. 26. Output voltage versus load current



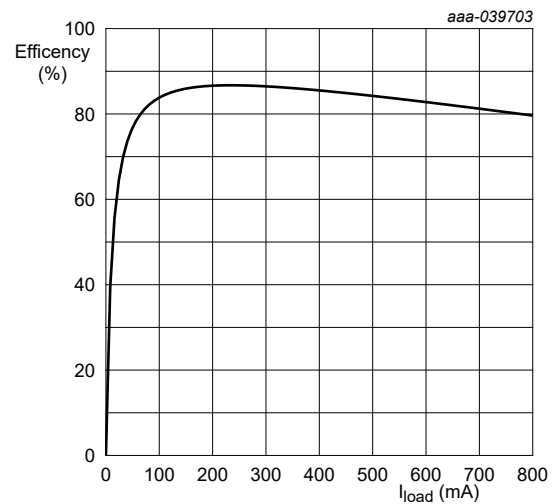
NXF6501 + Würth 750313638  
 (1)  $V_{CC} = 5\text{ V}; V_{OUT} = 5\text{ V}$   
 (2)  $V_{CC} = 3.3\text{ V}; V_{OUT} = 3.3\text{ V}$

Fig. 27. Efficiency versus load current



NXF6501 + Würth 750313638  
 $V_{CC} = 5\text{ V}; V_{OUT} = 3.3\text{ V}$

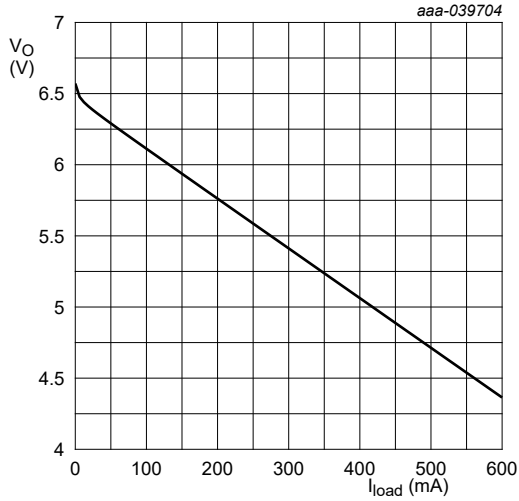
Fig. 28. Output voltage versus load current



NXF6501 + Würth 750313638  
 $V_{CC} = 5\text{ V}; V_{OUT} = 3.3\text{ V}$

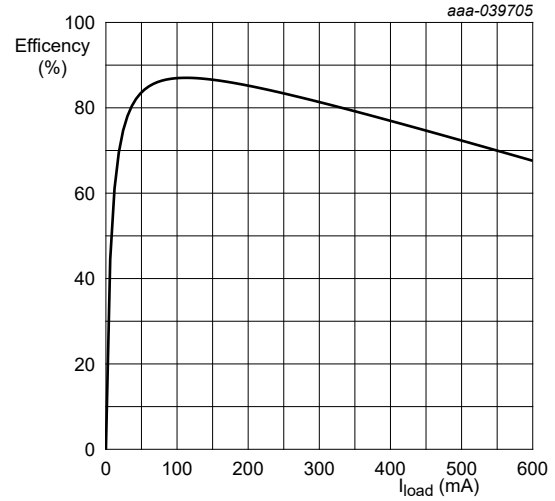
Fig. 29. Efficiency versus load current

Low-noise, 1.2 A transformer driver for isolated power supplies



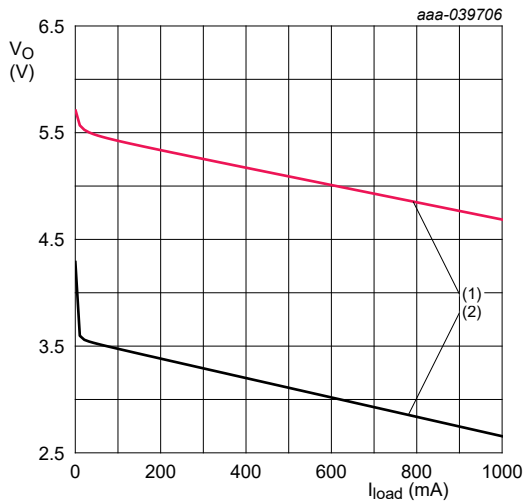
NXF6501 + Würth 750313626  
 $V_{CC} = 3.3\text{ V}; V_{OUT} = 5\text{ V}$

Fig. 30. Output voltage versus load current



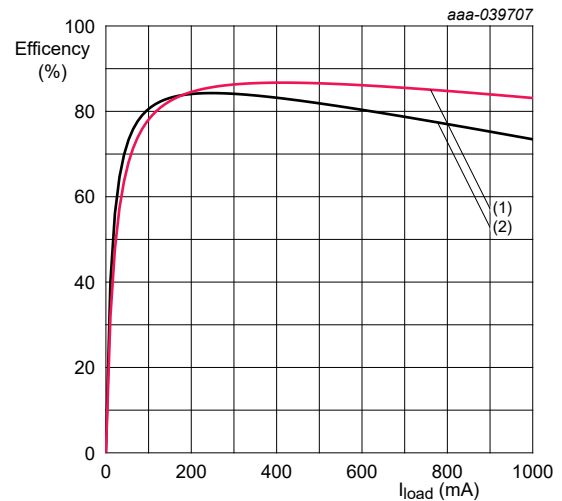
NXF6501 + Würth 750313626  
 $V_{CC} = 3.3\text{ V}; V_{OUT} = 5\text{ V}$

Fig. 31. Efficiency versus load current



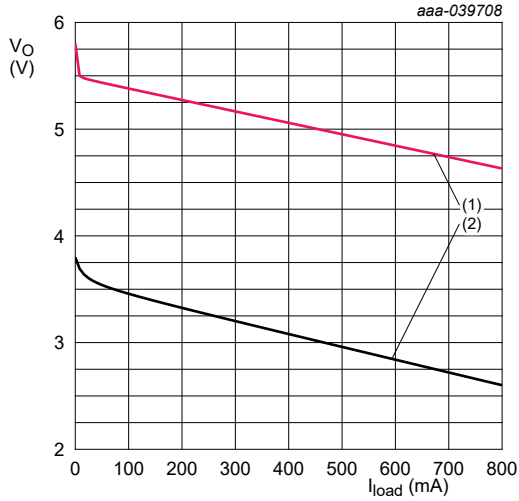
NXF6501 + Würth 750315371  
 (1)  $V_{CC} = 5\text{ V}; V_{OUT} = 5\text{ V}$   
 (2)  $V_{CC} = 3.3\text{ V}; V_{OUT} = 3.3\text{ V}$

Fig. 32. Output voltage versus load current



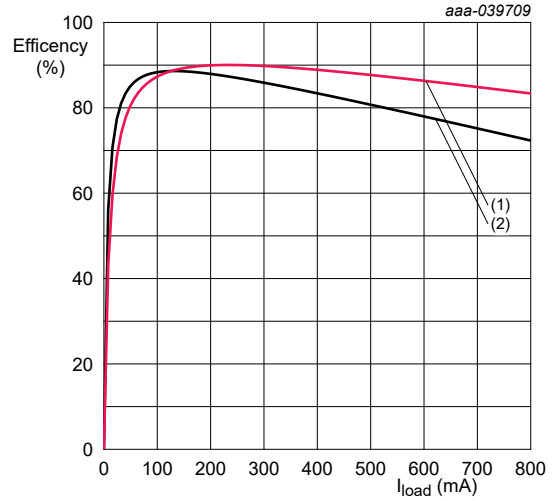
NXF6501 + Würth 750315371  
 (1)  $V_{CC} = 5\text{ V}; V_{OUT} = 5\text{ V}$   
 (2)  $V_{CC} = 3.3\text{ V}; V_{OUT} = 3.3\text{ V}$

Fig. 33. Efficiency versus load current



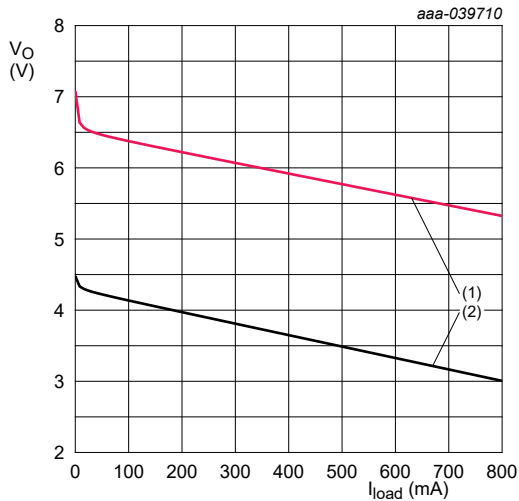
NXF6501 + Sunlord ALTWR-H02TF  
 (1)  $V_{CC} = 5\text{ V}$ ;  $V_{OUT} = 5\text{ V}$   
 (2)  $V_{CC} = 3.3\text{ V}$ ;  $V_{OUT} = 3.3\text{ V}$

Fig. 34. Output voltage versus load current



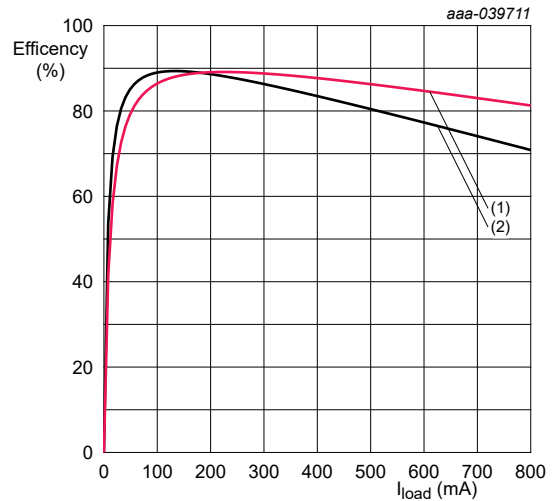
NXF6501 + Sunlord ALTWR-H02TF  
 $V_{CC} = 5\text{ V}$ ;  $V_{OUT} = 5\text{ V}$   
 (2)  $V_{CC} = 3.3\text{ V}$ ;  $V_{OUT} = 3.3\text{ V}$

Fig. 35. Efficiency versus load current



NXF6501 + Sunlord ALTWR-H06TF  
 (1)  $V_{CC} = 5\text{ V}$ ;  $V_{OUT} = 5\text{ V}$   
 (2)  $V_{CC} = 3.3\text{ V}$ ;  $V_{OUT} = 3.3\text{ V}$

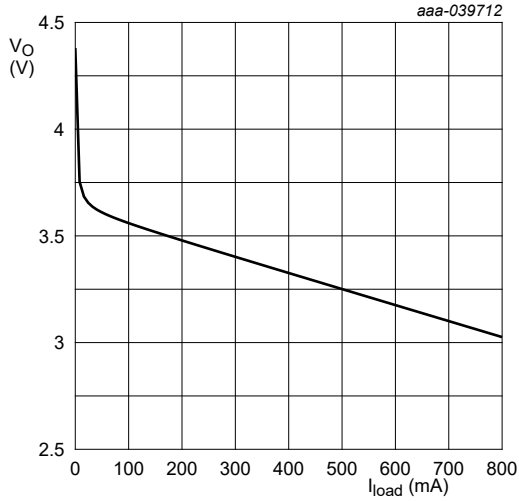
Fig. 36. Output voltage versus load current



NXF6501 + Sunlord ALTWR-H06TF  
 (1)  $V_{CC} = 5\text{ V}$ ;  $V_{OUT} = 5\text{ V}$   
 (2)  $V_{CC} = 3.3\text{ V}$ ;  $V_{OUT} = 3.3\text{ V}$

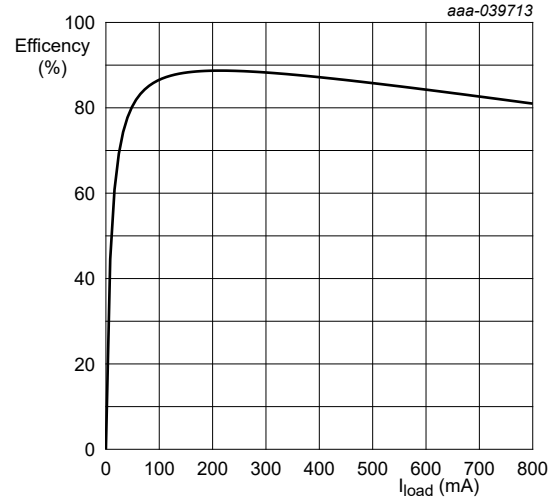
Fig. 37. Efficiency versus load current





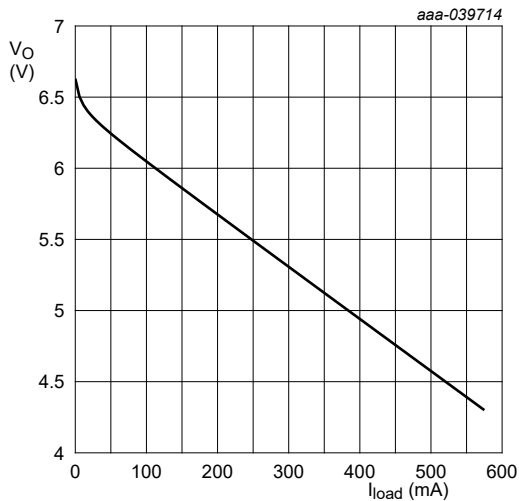
NXF6501 + Sunlord ALTRW-H06TF  
 $V_{CC} = 5\text{ V}; V_{OUT} = 5\text{ V}$

Fig. 38. Output voltage versus load current



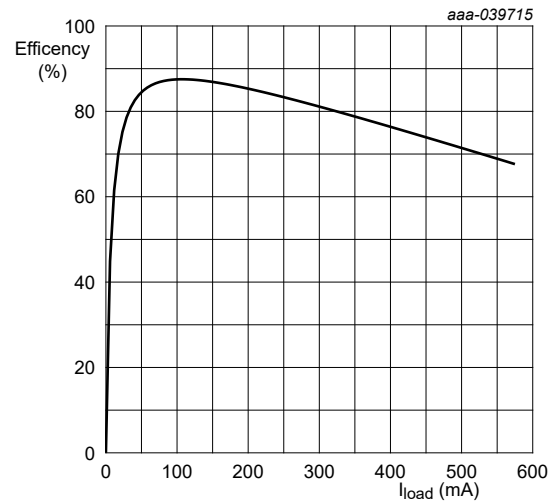
NXF6501 + Sunlord ALTRW-H06TF  
 $V_{CC} = 5\text{ V}; V_{OUT} = 5\text{ V}$

Fig. 39. Efficiency versus load current



NXF6501 + Sunlord ALTRW-H47TF  
 $V_{CC} = 5\text{ V}; V_{OUT} = 3.3\text{ V}$

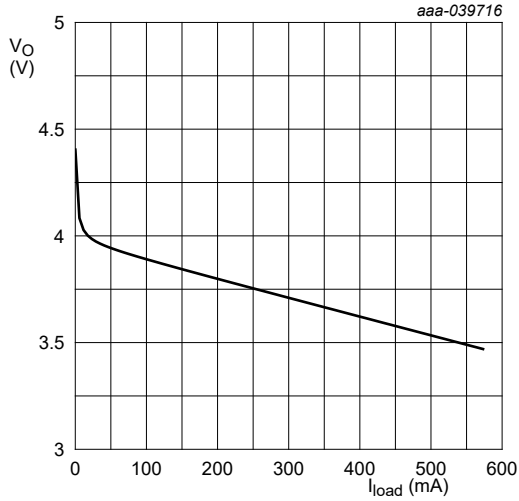
Fig. 40. Output voltage versus load current



NXF6501 + Sunlord ALTRW-H47TF  
 $V_{CC} = 5\text{ V}; V_{OUT} = 3.3\text{ V}$

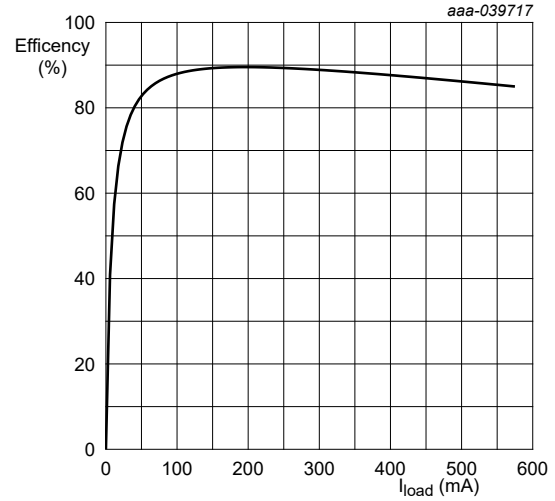
Fig. 41. Efficiency versus load current

Low-noise, 1.2 A transformer driver for isolated power supplies



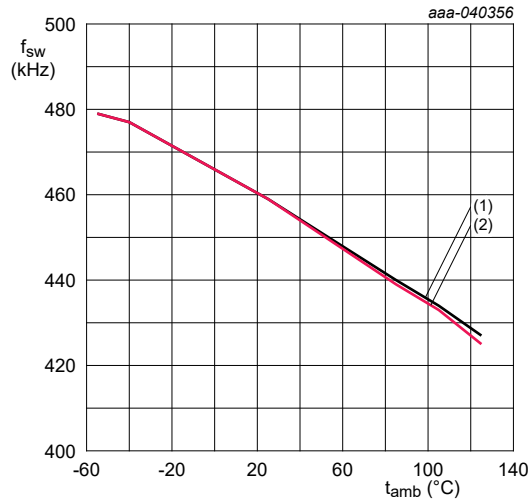
NXF6501 + Sunlord ALTWR-H94TF  
 $V_{CC} = 5\text{ V}$ ;  $V_{OUT} = 3.3\text{ V}$

Fig. 42. Output voltage versus load current



NXF6501 + Sunlord ALTWR-H94TF  
 $V_{CC} = 5\text{ V}$ ;  $V_{OUT} = 3.3\text{ V}$

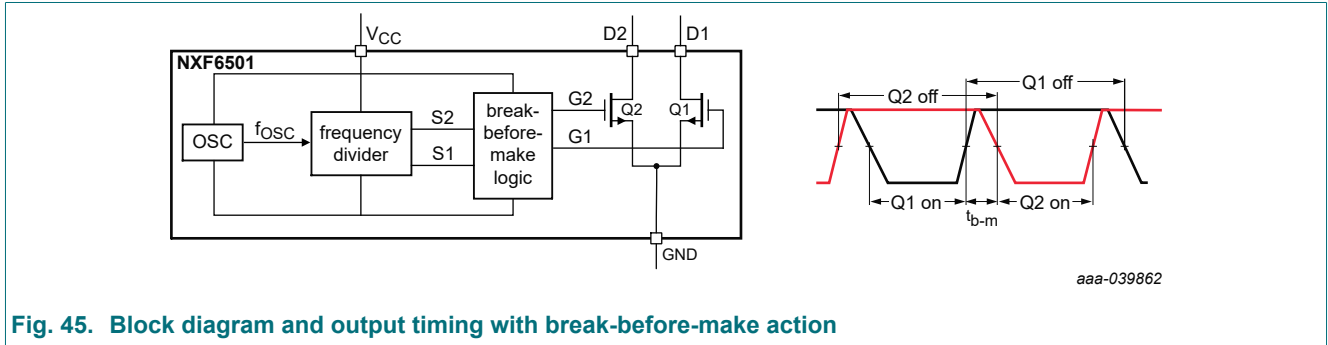
Fig. 43. Efficiency versus load current



1)  $V_{CC} = 2.25\text{ V}$   
 2)  $V_{CC} = 5.5\text{ V}$

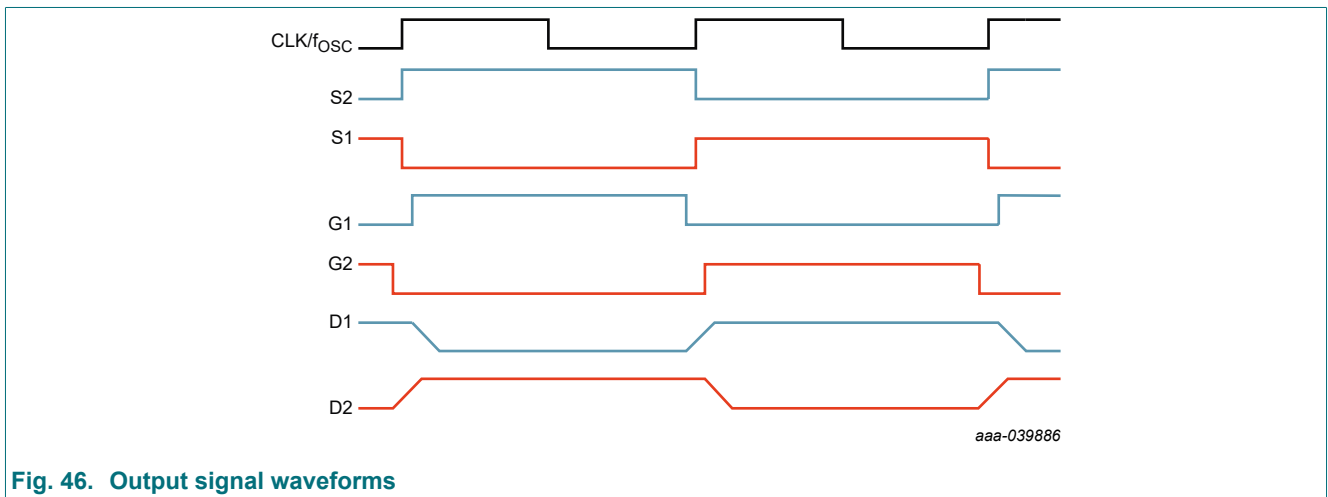
Fig. 44. Switching frequency versus ambient temperature

### 15. Application information



**Fig. 45. Block diagram and output timing with break-before-make action**

The NXF6501-Q100 is a driver for transformers that has been specifically designed for isolated DC-DC converters with a push-pull topology. It has been created with a focus on being cost-effective and having a small form-factor. The device features an oscillator that is responsible for feeding a gate-drive circuit. The gate-drive circuit consists of a frequency divider and break-before-make ( $t_{b-m}$ ) logic, which together produce two complementary output signals that switch the output transistors on and off alternately. An asynchronous divider divides the output frequency of the oscillator and provides two complementary output signals, S1 and S2, with a 50% duty cycle. The break-before-make logic inserts a dead-time between the high-pulses of the two signals. The resulting signals, G1 and G2, provide the gatedrive signals for the output transistors Q1 and Q2. In order to prevent shorting out both ends of the primary, both signals must be low and both transistors must be high-impedance during a short time period before either one of the gates can assume logic high. This brief interval is known as the break-before-make time and is illustrated in [Fig. 45](#).



**Fig. 46. Output signal waveforms**

## 15.1. Typical Application

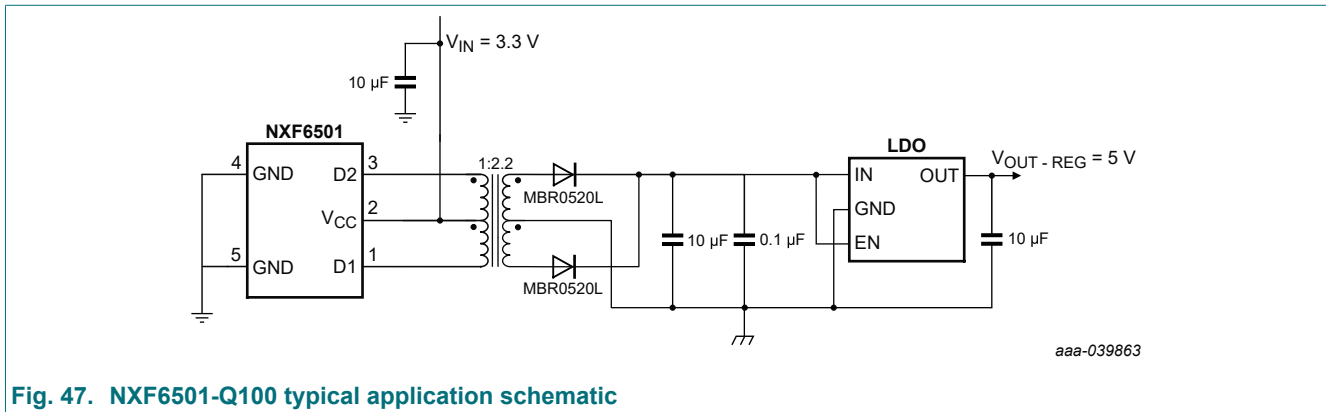


Fig. 47. NXF6501-Q100 typical application schematic

### Design requirements

For this design example, use the parameters listed in [Table 10](#) as design parameters.

Table 10. Design parameters

Parameters	Values
Input voltage range	3.3 V $\pm$ 3%
Output voltage	5 V
Maximum load current	100 mA

### Detailed design procedure

These guidelines for selecting components are focused on creating a push-pull converter that is efficient and capable of handling high current drive. It's important to note that the output voltage of an unregulated converter drops significantly across a wide range of load currents. [Fig. 10](#) and [Fig. 22](#) illustrate this characteristic curve, which demonstrates that the voltage difference between minimum and maximum loads exceeds the range of a transceiver's supply. To ensure a stable, load-independent power supply while maximizing efficiency, we strongly recommend implementing a low dropout regulator (LDO). [Fig. 48](#) depicts the final converter circuit, and [Fig. 11](#) and [Fig. 23](#) display the measured output voltage and efficiency characteristics for both regulated and unregulated outputs.

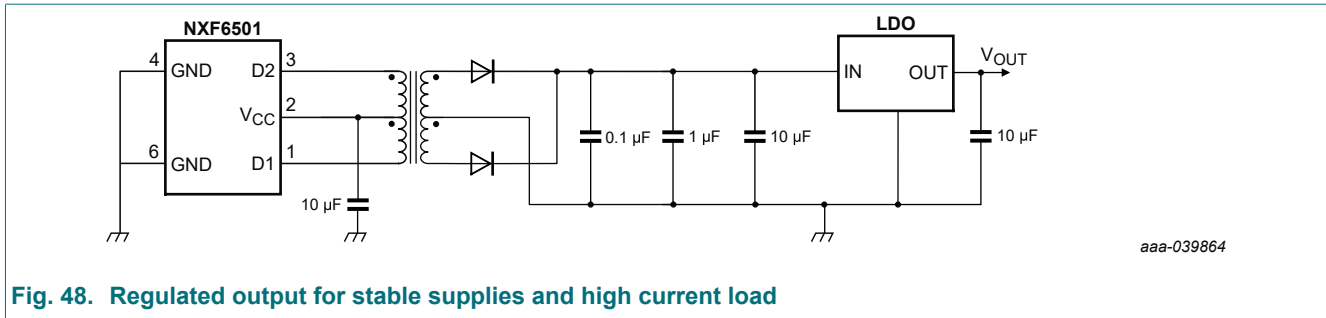
### Drive capability

The transformer driver is intended for low-power push-pull converters that have input and output voltages ranging from 2.25 V to 5.5 V. Although it's feasible to create converter designs with higher output voltages, it's important to exercise caution to prevent primary currents from exceeding the device's specified current limits when using higher turns ratios.

### Diode selection

To maximize the voltage output of a converter, it's important for a rectifier diode to have low-forward voltage. In high-frequency switching applications like the NXF6501-Q100, a diode with a short recovery time is also necessary. Schottky diodes fulfill both requirements and are highly recommended for push-pull converter designs. For low-voltage applications with ambient temperatures up to 85 °C, the affordable PMEG3020EP or MBR0520L Schottky rectifier is a great option with a typical forward voltage of 275 mV at 100 mA forward current. If higher output voltages such as  $\pm 10$  V are needed, the MBR0530 is a better choice with a higher DC blocking voltage of 30 V. However, lab tests have shown that at temperatures above 100 °C, the above Schottky diodes experience a significant increase in leakage currents. This can cause thermal runaway and the output voltage of the rectifier to collapse. To prevent this, use low-leakage Schottky diodes like RB168MM-40 for ambient temperatures exceeding 85 °C.

## Capacitor selection



**Fig. 48. Regulated output for stable supplies and high current load**

The converter circuit shown in Fig. 48 employs multi-layer ceramic chip (MLCC) capacitors as its capacitors. For proper functioning of the high-speed CMOS ICs, a bypass capacitor within 10 nF to 100 nF range is required. The input bulk capacitor, located at the center-tap of the primary, is responsible for supporting high currents during fast switching transients. For minimal ripple, it is recommended to use a 1 µF to 10 µF capacitor. In a 2-layer PCB design with a dedicated ground plane, this capacitor should be positioned near the primary center-tap to reduce trace inductance. In a 4-layer board design, where low-inductance reference planes are available for ground and  $V_{IN}$ , the capacitor can be placed at the entrance of the board. Two parallel vias should be used to ensure low-inductance paths for each connection to a reference plane or to the primary center-tap. To smooth out the output voltage, a bulk capacitor should be placed at the rectifier output. A capacitor with a value of 1 µF to 10 µF is recommended. Although not always necessary, using a small capacitor with a value of 47 nF to 100 nF at the regulator input can improve the regulator's transient response and noise rejection. The LDO output capacitor is used to buffer the regulated output for subsequent isolator and transceiver circuitry. The choice of output capacitor depends on the LDO stability requirements, as stated in the data sheet. However, in most cases, a low-ESR ceramic capacitor within the 4.7 µF to 10 µF range is sufficient to meet these requirements.

## Transformer selection

In order to avoid transformer saturation, the V-t product should exceed the highest V-t product generated by the device. The device's maximum voltage output is determined by adding 10% to the nominal converter input. The primary voltage should not exceed this maximum value for more than half the period of the lowest frequency specified for the input voltage. As a result, the minimum V-t product required for the transformer can be calculated by:

$$V \times t_{\min} \geq V_{IN-\max} \times \frac{T_{\max}}{2} = \frac{V_{IN-\max}}{2 \times f_{\min}}$$

Assuming a 5 V supply, and considering the values of  $f_{\min}$  as 300 kHz for NXF6501-Q100, the minimum V-t products can be obtained by applying the equation above, resulting in:

$$V \times t_{\min} \geq \frac{5.5 V}{2 \times 300 \text{ kHz}} = 9.1 \text{ V}\mu\text{s for NXF6501-Q100.}$$

Low-power center-tapped transformers typically have common V-t values that fall within the range of 22 Vµs to 150 Vµs, and they usually have a standard footprint size of 10 mm x 12 mm. However, for transformers specifically intended for PCMCIA applications, V-t values as low as 6 Vµs can be obtained, and their footprint is significantly smaller at 6 mm x 6 mm. While the device can drive any of these transformers in terms of V-t values, there are other critical factors that must be taken into account before deciding on the most suitable transformer, such as isolation voltage, transformer wattage, and turns ratio.

Table 11. Recommended isolation transformers optimized for the NXF6501-Q100

Turns ratio	V x T V $\mu$ s	Isolation V <sub>RMS</sub>	Dimensions (mm)	Application	LDO[1]	Order no.	Manufacturer	
1:1.1 $\pm$ 2%	7	2500	6.73 x 10.05 x 4.19	3.3 V $\rightarrow$ 3.3 V, 100 mA, NXF6501; see <a href="#">Fig. 10</a> and <a href="#">Fig. 11</a>	No	760390011	Wurth Electronics / Midcom	
1:1.1 $\pm$ 2%	11			5 V $\rightarrow$ 5 V, 750 mA, NXF6501; see <a href="#">Fig. 12</a> and <a href="#">Fig. 13</a>		760390012		
1:1.7 $\pm$ 2%				3.3 V $\rightarrow$ 5 V, 500 mA, NXF6501; see <a href="#">Fig. 14</a> and <a href="#">Fig. 15</a>		760390013		
1:1.3 $\pm$ 2%				3.3 V $\rightarrow$ 3.3 V, 600 mA, NXF6501; see <a href="#">Fig. 16</a> and <a href="#">Fig. 17</a>	Yes	760390014		
1:1.3 $\pm$ 2%				5 V $\rightarrow$ 5 V, 600 mA, NXF6501; see <a href="#">Fig. 16</a> and <a href="#">Fig. 17</a>		760390014		
1:2.1 $\pm$ 2%				3.3 V $\rightarrow$ 5 V, 450 mA, NXF6501; see <a href="#">Fig. 18</a> and <a href="#">Fig. 19</a>		760390015		
1.23:1 $\pm$ 2%				5 V $\rightarrow$ 3.3 V, 650 mA, NXF6501; see <a href="#">Fig. 20</a> and <a href="#">Fig. 21</a>		750313710		
1:1.7 $\pm$ 2%	8.9			8.3 x 12.6 x 4.1	3.3 V $\rightarrow$ 3.3 V, 800 mA, NXF6501	No		750316028
1:2.1 $\pm$ 2%		3.3 V $\rightarrow$ 5 V, 600 mA, NXF6501	750316029					
1.3:1 $\pm$ 2%	10.8	5 V $\rightarrow$ 3.3 V, 1.2 A, NXF6501	750316030					
1:1.1 $\pm$ 2%	8.6	3.3 V $\rightarrow$ 3.3 V, 1 A, NXF6501; 5 V $\rightarrow$ 5 V, 1 A, NXF6501; see <a href="#">Fig. 32</a> and <a href="#">Fig. 33</a>	750315371					
1:1.1 $\pm$ 2%	11	5000	9.14 x 12.7 x 7.37	3.3 V $\rightarrow$ 3.3 V, 800 mA, NXF6501; see <a href="#">Fig. 22</a> and <a href="#">Fig. 23</a>	No	750313734		
1:1.1 $\pm$ 2%						5 V $\rightarrow$ 5 V, 800 mA, NXF6501; see <a href="#">Fig. 22</a> and <a href="#">Fig. 23</a>		750313734
1:1.7 $\pm$ 2%						3.3 V $\rightarrow$ 5 V, 600 mA, NXF6501; see <a href="#">Fig. 24</a> and <a href="#">Fig. 25</a>		750313769
1:1.3 $\pm$ 2%					3.3 V $\rightarrow$ 3.3 V, 650 mA, NXF6501; 5 V $\rightarrow$ 5 V, 650 mA, NXF6501; see <a href="#">Fig. 28</a> and <a href="#">Fig. 29</a>	Yes		750313638
1:2.1 $\pm$ 2%					3.3 V $\rightarrow$ 5 V, 500 mA, NXF6501; see <a href="#">Fig. 30</a> and <a href="#">Fig. 31</a>			750313626
1.3:1 $\pm$ 2%					5 V $\rightarrow$ 3.3 V, 650 mA, NXF6501; see <a href="#">Fig. 28</a> and <a href="#">Fig. 29</a>	No		750313638
1:1.3 $\pm$ 3%	11	5000	10.4 x 12.2 x 6.1	3.3 V $\rightarrow$ 3.3 V, 300 mA, NXF6501; 5 V $\rightarrow$ 5 V, 300 mA, NXF6501	No	HCT-SM-1.3-8-2	Bourns	
1:1.1 $\pm$ 2%	9.2	2500	7.01 x 11 x 4.19	3.3 V $\rightarrow$ 3.3 V, 150 mA, NXF6501; 5 V $\rightarrow$ 5 V, 150 mA, NXF6501	No	EPC3668G-LF	PCA Electronics	
3:4 $\pm$ 5%	10	5000	12.5 x 9.2 x 7.6	3.3 V $\rightarrow$ 3.3 V, 600 mA, NXF6501; see <a href="#">Fig. 36</a> and <a href="#">Fig. 37</a>	Yes	ALTWR-H06TF	SunLord	
1:2 $\pm$ 5%	11	5000	12.5 x 9.2 x 7.6	3.3 V $\rightarrow$ 5 V, 600 mA, NXF6501; see <a href="#">Fig. 40</a> and <a href="#">Fig. 41</a>	Yes	ALTWR-H47TF		
11:9 $\pm$ 5%	16	5000	12.5 x 9.2 x 7.6	5 V $\rightarrow$ 3.3 V, 600 mA, NXF6501; see <a href="#">Fig. 42</a> and <a href="#">Fig. 43</a>	Yes	ALTWR-H94TF		
3:4 $\pm$ 5%	10	5000	12.5 x 9.2 x 7.6	5 V $\rightarrow$ 5 V, 600 mA, NXF6501; see <a href="#">Fig. 36</a> and <a href="#">Fig. 37</a>	Yes	ALTWR-H06TF		
8:9 $\pm$ 5%	11	5000	12.5 x 9.2 x 7.6	3.3 V $\rightarrow$ 3.3 V, 600 mA, NXF6501; see <a href="#">Fig. 34</a> and <a href="#">Fig. 35</a>	No	ALTWR-H02TF		
1:1.55 $\pm$ 5%	13	5000	12.5 x 9.2 x 7.6	3.3 V $\rightarrow$ 5 V, 600 mA, NXF6501	No	ALTWR-H61TF		

## Low-noise, 1.2 A transformer driver for isolated power supplies

Turns ratio	V x T V $\mu$ s	Isolation V <sub>RMS</sub>	Dimensions (mm)	Application	LDO[1]	Order no.	Manufacturer
3:4 $\pm$ 5%	10	5000	12.5 x 9.2 x 7.6	5 V $\rightarrow$ 3.3 V, 600 mA, NXF6501; see <a href="#">Fig. 38</a> and <a href="#">Fig. 39</a>	No	ALTWR-H06TF	
8:9 $\pm$ 5%	11	5000	12.5 x 9.2 x 7.6	5 V $\rightarrow$ 5 V, 600 mA, NXF6501; see <a href="#">Fig. 34</a> and <a href="#">Fig. 35</a>	No	ALTWR-H02TF	
1:1.5 $\pm$ 3%	34.4	2500	10 x 12.07 x 5.97	3.3 V $\rightarrow$ 3.3 V, 1 A, NXF6501; 5 V $\rightarrow$ 5 V, 1 A, NXF6501	Yes	DA2303-AL	Coilcraft
1:2.2 $\pm$ 3%	21.5	2500	10 x 12.07 x 5.97	3.3 V $\rightarrow$ 5 V, 1 A, NXF6501		DA2304-AL	

[1] For configurations with LDO, a higher voltage than the required output voltage is generated, to allow for LDO drop-out.

## 15.2. Power supply recommendations

The equipment is intended to function within a range of input voltage supply between 2.5 V and 5 V nominal, which requires regulation within  $\pm 10\%$ . When the input supply is situated farther than a few inches from the device, it is advisable to connect a 0.1  $\mu\text{F}$  by-pass capacitor as near as possible to the device's  $V_{\text{CC}}$  pin, and a 10  $\mu\text{F}$  capacitor near the transformer center-tap pin.

## 15.3. Layout guidelines

To ensure proper functioning, the  $V_{\text{IN}}$  pin requires a low-ESR ceramic bypass-capacitor, with a recommended capacitor value ranging from 1  $\mu\text{F}$  to 10  $\mu\text{F}$ . The capacitor should have a voltage rating of at least 10 V and use X5R or X7R dielectric material.

The optimal placement for the capacitor is closest to the  $V_{\text{IN}}$  and GND pins at the board entrance, minimizing the loop area formed by the bypass-capacitor connection, the  $V_{\text{IN}}$  terminal, and the GND pin, as demonstrated in Fig. 49 of the PCB layout example.

Furthermore, the connections between the device's D1 and D2 pins and the transformer primary endings, and the connection of the device  $V_{\text{CC}}$  pin and the transformer center-tap should be as close as possible to minimize trace inductance.

The device  $V_{\text{CC}}$  pin and transformer center-tap should be buffered to ground using a low-ESR ceramic bypass-capacitor with a recommended capacitor value ranging from 1  $\mu\text{F}$  to 10  $\mu\text{F}$ . The capacitor should have a voltage rating of at least 16 V and use X5R or X7R dielectric material.

Additionally, the device GND pins must be tied to the PCB ground plane using at least two vias to minimize inductance. The ground connections of the capacitors and the ground plane should also use at least two vias for the same reason.

Finally, the  $V_{\text{OUT}}$  pin also requires buffering to ISO-Ground with a low-ESR ceramic bypass-capacitor, with a recommended capacitor value ranging from 1  $\mu\text{F}$  to 10  $\mu\text{F}$ . The capacitor should have a voltage rating of at least 16 V and use X5R or X7R dielectric material.

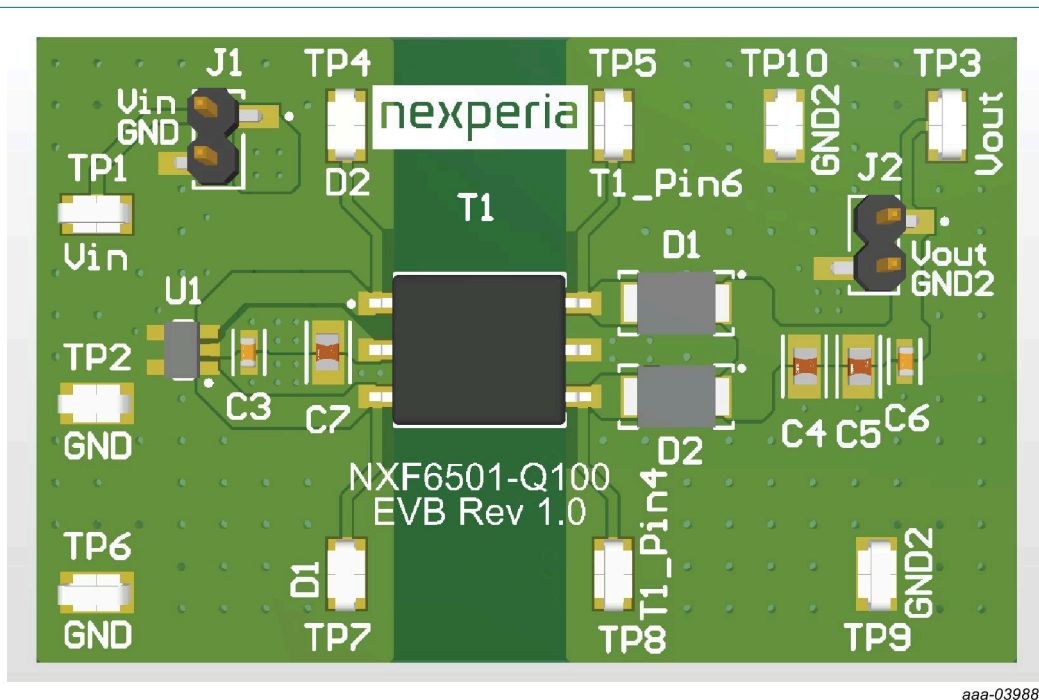


Fig. 49. Layout example



### 16. Package outline

TSOT23-5: plastic, surface-mounted package; 5 leads; 0.95 mm pitch; 2.9 mm x 1.6 mm x 1.1 mm body

SOT8098-1

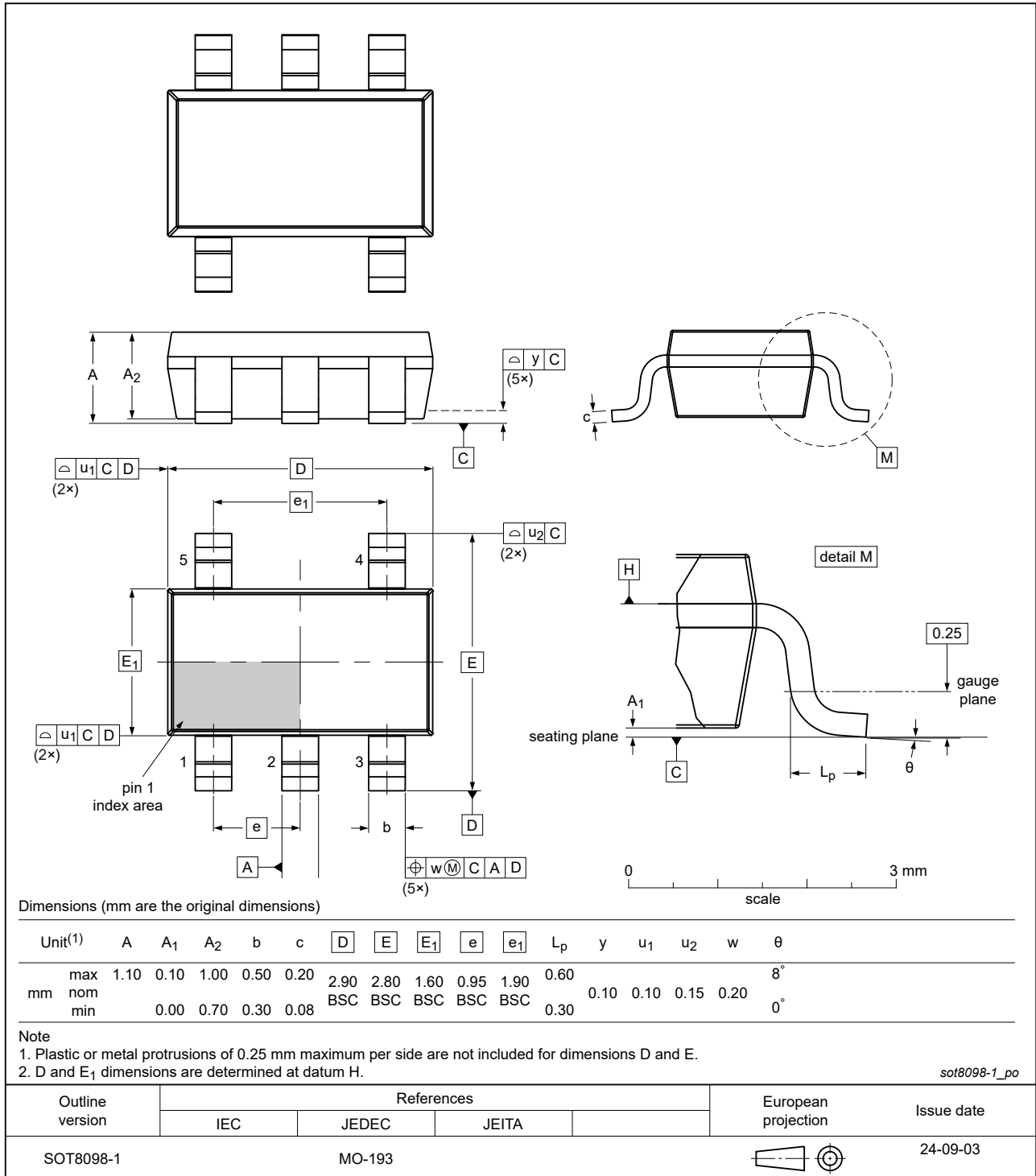


Fig. 50. Package outline SOT8098-1 (TSOT23-5)

## 17. Soldering

Footprint information for reflow soldering of TSOT23-5 package

SOT8098-1

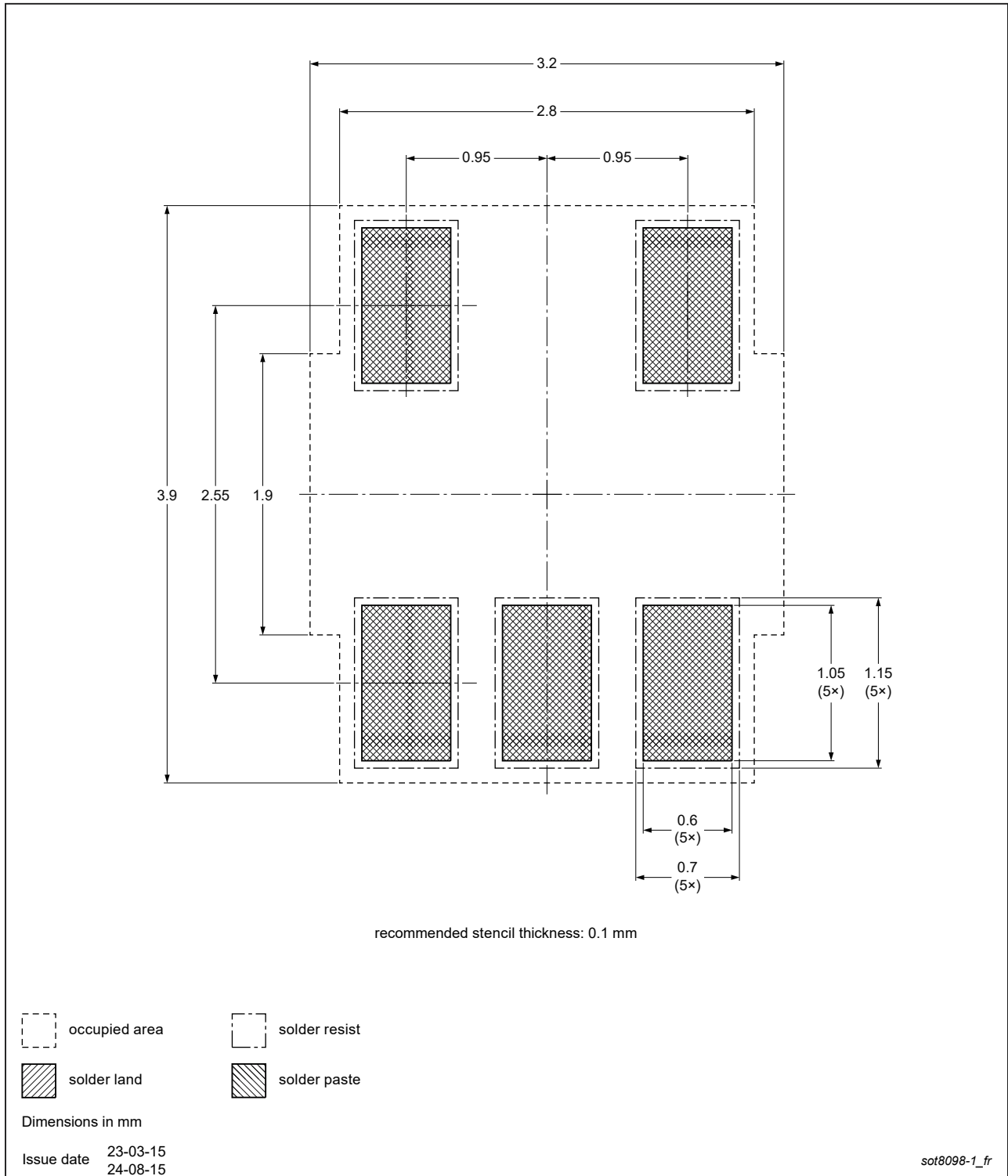


Fig. 51. Reflow soldering footprint SOT8098-1 (TSOT23-5)

## 18. Abbreviations

Table 12. Abbreviations

Acronym	Description
CDM	Charged-Device Model
CMOS	Complementary Metal Oxide Semiconductor
EMI	Electromagnetic Interference
MOSFET	Metal-Oxide-Semiconductor Field-Effect Transistor
UVLO	Undervoltage Lockout
SSC	Spread Spectrum Clocking
HBM	Human Body Model
ESD	ElectroStatic Discharge
MLCC	Multi-Layer Ceramic Capacitors

## 19. Revision history

Table 13. Revision history

Document ID	Release date	Data sheet status	Change notice	Supersedes
NXF6501_Q100 v.1	20240917	Product data sheet	-	-

## 20. Legal information

### Data sheet status

Document status [1][2]	Product status [3]	Definition
Objective [short] data sheet	Development	This document contains data from the objective specification for product development.
Preliminary [short] data sheet	Qualification	This document contains data from the preliminary specification.
Product [short] data sheet	Production	This document contains the product specification.

- [1] Please consult the most recently issued document before initiating or completing a design.
- [2] The term 'short data sheet' is explained in section "Definitions".
- [3] The product status of device(s) described in this document may have changed since this document was published and may differ in case of multiple devices. The latest product status information is available on the internet at <https://www.nexperia.com>.

### Definitions

**Draft** — The document is a draft version only. The content is still under internal review and subject to formal approval, which may result in modifications or additions. Nexperia does not give any representations or warranties as to the accuracy or completeness of information included herein and shall have no liability for the consequences of use of such information.

**Short data sheet** — A short data sheet is an extract from a full data sheet with the same product type number(s) and title. A short data sheet is intended for quick reference only and should not be relied upon to contain detailed and full information. For detailed and full information see the relevant full data sheet, which is available on request via the local Nexperia sales office. In case of any inconsistency or conflict with the short data sheet, the full data sheet shall prevail.

**Product specification** — The information and data provided in a Product data sheet shall define the specification of the product as agreed between Nexperia and its customer, unless Nexperia and customer have explicitly agreed otherwise in writing. In no event however, shall an agreement be valid in which the Nexperia product is deemed to offer functions and qualities beyond those described in the Product data sheet.

### Disclaimers

**Limited warranty and liability** — Information in this document is believed to be accurate and reliable. However, Nexperia does not give any representations or warranties, expressed or implied, as to the accuracy or completeness of such information and shall have no liability for the consequences of use of such information. Nexperia takes no responsibility for the content in this document if provided by an information source outside of Nexperia.

In no event shall Nexperia be liable for any indirect, incidental, punitive, special or consequential damages (including - without limitation - lost profits, lost savings, business interruption, costs related to the removal or replacement of any products or rework charges) whether or not such damages are based on tort (including negligence), warranty, breach of contract or any other legal theory.

Notwithstanding any damages that customer might incur for any reason whatsoever, Nexperia's aggregate and cumulative liability towards customer for the products described herein shall be limited in accordance with the Terms and conditions of commercial sale of Nexperia.

**Right to make changes** — Nexperia reserves the right to make changes to information published in this document, including without limitation specifications and product descriptions, at any time and without notice. This document supersedes and replaces all information supplied prior to the publication hereof.

**Suitability for use in automotive applications** — This Nexperia product has been qualified for use in automotive applications. Unless otherwise agreed in writing, the product is not designed, authorized or warranted to be suitable for use in life support, life-critical or safety-critical systems or

equipment, nor in applications where failure or malfunction of an Nexperia product can reasonably be expected to result in personal injury, death or severe property or environmental damage. Nexperia and its suppliers accept no liability for inclusion and/or use of Nexperia products in such equipment or applications and therefore such inclusion and/or use is at the customer's own risk.

**Quick reference data** — The Quick reference data is an extract of the product data given in the Limiting values and Characteristics sections of this document, and as such is not complete, exhaustive or legally binding.

**Applications** — Applications that are described herein for any of these products are for illustrative purposes only. Nexperia makes no representation or warranty that such applications will be suitable for the specified use without further testing or modification.

Customers are responsible for the design and operation of their applications and products using Nexperia products, and Nexperia accepts no liability for any assistance with applications or customer product design. It is customer's sole responsibility to determine whether the Nexperia product is suitable and fit for the customer's applications and products planned, as well as for the planned application and use of customer's third party customer(s). Customers should provide appropriate design and operating safeguards to minimize the risks associated with their applications and products.

Nexperia does not accept any liability related to any default, damage, costs or problem which is based on any weakness or default in the customer's applications or products, or the application or use by customer's third party customer(s). Customer is responsible for doing all necessary testing for the customer's applications and products using Nexperia products in order to avoid a default of the applications and the products or of the application or use by customer's third party customer(s). Nexperia does not accept any liability in this respect.

**Limiting values** — Stress above one or more limiting values (as defined in the Absolute Maximum Ratings System of IEC 60134) will cause permanent damage to the device. Limiting values are stress ratings only and (proper) operation of the device at these or any other conditions above those given in the Recommended operating conditions section (if present) or the Characteristics sections of this document is not warranted. Constant or repeated exposure to limiting values will permanently and irreversibly affect the quality and reliability of the device.

**Terms and conditions of commercial sale** — Nexperia products are sold subject to the general terms and conditions of commercial sale, as published at <http://www.nexperia.com/profile/terms>, unless otherwise agreed in a valid written individual agreement. In case an individual agreement is concluded only the terms and conditions of the respective agreement shall apply. Nexperia hereby expressly objects to applying the customer's general terms and conditions with regard to the purchase of Nexperia products by customer.

**No offer to sell or license** — Nothing in this document may be interpreted or construed as an offer to sell products that is open for acceptance or the grant, conveyance or implication of any license under any copyrights, patents or other industrial or intellectual property rights.

**Export control** — This document as well as the item(s) described herein may be subject to export control regulations. Export might require a prior authorization from competent authorities.

**Translations** — A non-English (translated) version of a document is for reference only. The English version shall prevail in case of any discrepancy between the translated and English versions.

### Trademarks

Notice: All referenced brands, product names, service names and trademarks are the property of their respective owners.

## Contents

<b>1. General description</b>	<b>1</b>
<b>2. Features and benefits</b>	<b>1</b>
<b>3. Applications</b>	<b>1</b>
<b>4. Ordering information</b>	<b>2</b>
<b>5. Marking</b>	<b>2</b>
<b>6. Functional diagram</b>	<b>2</b>
<b>7. Pinning information</b>	<b>3</b>
7.1. Pinning information	3
7.2. Pin description	3
<b>8. Functional description</b>	<b>3</b>
8.1. Overview	3
8.2. Functional block diagram	4
8.3. Feature description	4
8.4. Functional modes	5
<b>9. Limiting values</b>	<b>7</b>
<b>10. ESD ratings</b>	<b>7</b>
<b>11. Recommended operating conditions</b>	<b>7</b>
<b>12. Thermal characteristics</b>	<b>7</b>
<b>13. Electrical characteristics</b>	<b>8</b>
<b>14. Dynamic characteristics</b>	<b>9</b>
14.1. Waveforms and test circuits	9
14.2. Typical characteristics NXF6501-Q100	10
<b>15. Application information</b>	<b>19</b>
15.1. Typical Application	20
15.2. Power supply recommendations	24
15.3. Layout guidelines	24
<b>16. Package outline</b>	<b>25</b>
<b>17. Soldering</b>	<b>26</b>
<b>18. Abbreviations</b>	<b>27</b>
<b>19. Revision history</b>	<b>27</b>
<b>20. Legal information</b>	<b>28</b>

© Nexperia B.V. 2024. All rights reserved

For more information, please visit: <http://www.nexperia.com>

For sales office addresses, please send an email to: [salesaddresses@nexperia.com](mailto:salesaddresses@nexperia.com)

Date of release: 17 September 2024