

NMUX1309

1.5 V to 5.5 V, dual 4-channel switch analog multiplexer and demultiplexer with injection-current control

Rev. 1.2 — 16 April 2024

Product data sheet

1. General description

The NMUX1309 is a general purpose, CMOS, bi-directional, dual 4 channel analog switch, with an operating voltage range of 1.5 V to 5.5 V. The NMUX1309 is dual source compatible with existing 4852 and 4052 devices. The NMUX1309 extends the digital logic thresholds to be compatible with 1.8 V systems without the need for voltage translation.

The analog signal pins are comprised of two common inputs/outputs (nZ) and eight independent inputs/outputs (nY0 to nY3). All analog signal pins are bi-directional and support a voltage range from GND to V_{CC} .

All analog signal pins integrate injection current control circuitry. This control circuitry isolates overvoltage spikes on disconnected analog signal pins from coupling to the connected analog signal path, thereby preserving measurement accuracy. Additionally, this integration makes the use of external overvoltage clamp components (e.g. resistive diode network) unnecessary.

There are three control signal pins (S0, S1, and \bar{E}). S0 and S1 determine the analog channels to connect between nZ and nYn. \bar{E} can be used to override S0 and S1, disconnecting all analog channels. The control signal pins support 1.8 V logic thresholds across all operating voltages. In addition, these pins are 5.5 V tolerant, enabling up to 5.5 V operation independent of supply voltage.

2. Features and benefits

- Wide operating range: 1.5 V to 5.5 V
- 2x SP4T-Z functionality
- Rail-to-Rail operation on analog signal pins
- Injection current control
- 1.8 V digital logic thresholds
 - Digital pins compatible with 1.8 V logic thresholds across full V_{CC} range
 - Removes need for up-translation device for compatibility with low voltage GPIOs
- I_{off} circuitry
 - Enables wider latitude for power sequencing considerations
 - Isolates backflow between supply rail and any biased digital/analog input when $V_{CC} = 0$ V
 - Prevents any biased digital/analog input from backpowering V_{CC} when $V_{CC} = 0$ V
 - Maintains Hi-Z state of analog switch when $V_{CC} = 0$ V
- 5.5 V overvoltage tolerant digital inputs
 - Supports switching of 5.5 V digital signals across full V_{CC} operating range
 - Removes need for down-translation when switching thresholds are met
- Pin compatible with industry standard 4052 and 4852 analog switch products
- ESD protection:
 - HBM: ANSI/ESDA/JEDEC JS-001 class 2 exceeds 2000 V
 - CDM: ANSI/ESDA/JEDEC JS-002 class C2b exceeds 750 V
- Specified from -40 °C to +85 °C and from -40 °C to +125 °C

3. Applications

- Analog or digital multiplexing/demultiplexing
- System monitoring and diagnostics
- Enterprise computing
- Appliances

4. Ordering information

Table 1. Ordering information

Type number	Package			Version
	Temperature range	Name	Description	
NMUX1309PW	-40 °C to +125 °C	TSSOP16	plastic thin shrink small outline package; 16 leads; body width 4.4 mm	SOT403-1
NMUX1309BQ	-40 °C to +125 °C	DHVQFN16	plastic dual in-line compatible thermal enhanced very thin quad flat package; no leads; 16 terminals; body 2.5 × 3.5 × 0.85 mm	SOT763-1

5. Marking

Table 2. Marking

Type number	Marking code
NMUX1309PW	NMU1309
NMUX1309BQ	NM1309

6. Functional diagram

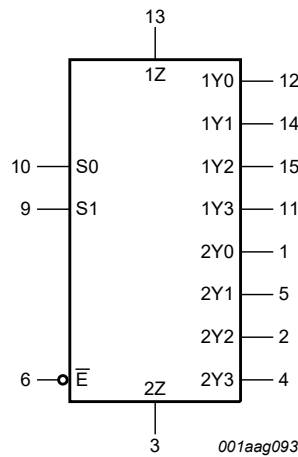


Fig. 1. Logic symbol

1.5 V to 5.5 V, dual 4-channel switch analog multiplexer and demultiplexer with injection-current control

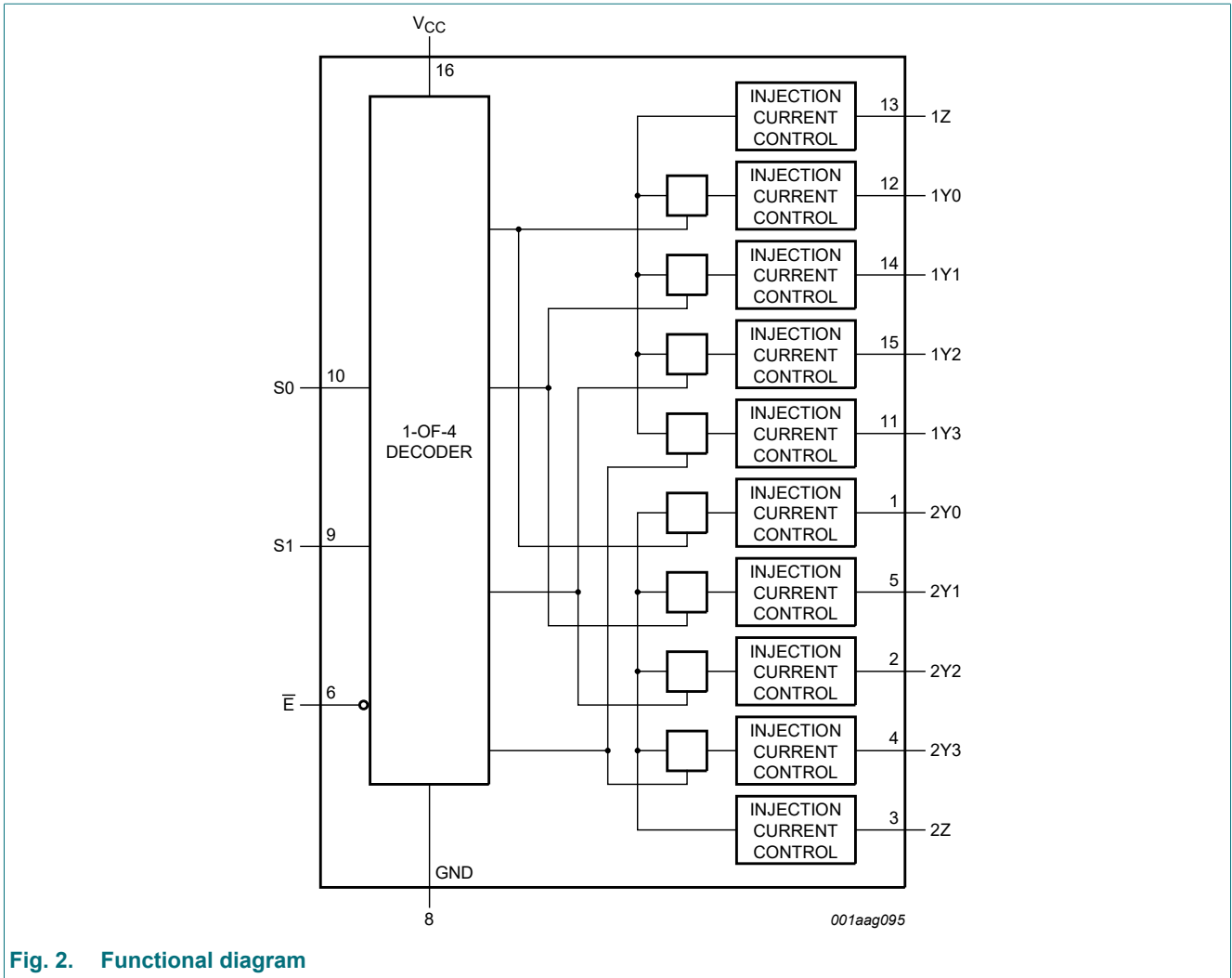
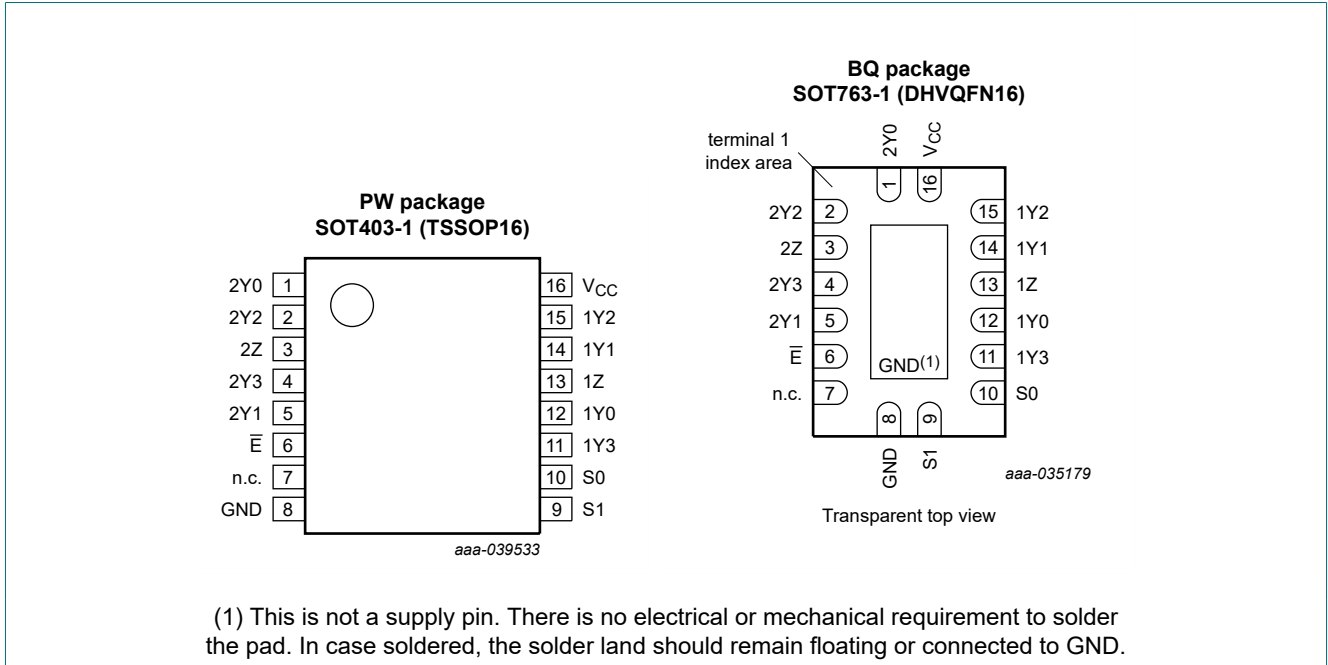


Fig. 2. Functional diagram

7. Pinning information

7.1. Pinning



7.2. Pin description

Table 3. Pin description

Symbol	Pin	Description
2Y0	1	independent input/output
2Y2	2	independent input/output
2Z	3	common input/output
2Y3	4	independent input/output
2Y1	5	independent input/output
\bar{E}	6	enable input (active LOW); do not leave this pin floating
n.c.	7	not connected
GND	8	ground (0 V)
S1	9	select input; do not leave this pin floating
S0	10	select input; do not leave this pin floating
1Y3	11	independent input/output
1Y0	12	independent input/output
1Z	13	common input/output
1Y1	14	independent input/output
1Y2	15	independent input/output
V _{CC}	16	supply voltage

8. Functional description

Table 4. Function table

H = HIGH voltage level; L = LOW voltage level; X = don't care.

Input			Channel ON
E	S1	S0	
L	L	L	nY0 to nZ
L	L	H	nY1 to nZ
L	H	L	nY2 to nZ
L	H	H	nY3 to nZ
H	X	X	-

8.1. Overview

The NMUX1309 is a general purpose analog switch with a 2 poles, each of which can be configured to select between one of four possible connection paths (2x SP4T). Each analog connection path is bi-directional, with similar electrical characteristics independent of the direction of signal propagation.

8.2. Key features

Injection current control

Current injection can occur in systems where an analog voltage can experience transient spikes due to signal propagation over long distances with high inductance. Voltage exposure above the supply voltage will source excessive current into an analog input, which is referred to as positive injection. Voltage exposure below the ground voltage will sink excessive current from an analog input, which is referred to as negative injection. Both types of injection current elevate the risk of device damage to an analog input and can introduce a large voltage error to the analog signal itself.

The NMUX1309 mitigates both risks by integrating an injection current control circuit to divert both positive injection and negative injection through a bypass FET that connects to GND. This implementation minimizes any shift in the supply voltage, therefore minimizing any shift in the device's ON Resistance, and thus minimizes changes in the measured analog voltage. The injection current control circuit is active on all analog pins, independent of whether the channel is selected/unselected.

1.8 V Compatible digital logic thresholds

It is common for modern systems to operate digital signals from lower voltage nodes such as 1.8 V, while operating their analog signals at higher voltage nodes such as 3.3 V or 5.0 V. To remove the requirements for a voltage translation device, the NMUX1309 digital control pins maintain 1.8 V logic compatible thresholds at higher operating voltages, up to 5.5 V.

I_{off} protection circuitry of digital inputs

The NMUX1309 implements I_{off} protection circuitry on the digital control pins, isolating those pins from the internal circuits when the supply is unpowered (i.e., V_{CC} = 0 V). The ESD protection diodes on the digital input pins do not have a connection path to V_{CC}. If the digital input pins are biased when the V_{CC} pin is unpowered:

1. The high impedance of the digital input pins minimizes input current leakage.

1.5 V to 5.5 V, dual 4-channel switch analog multiplexer and demultiplexer with injection-current control

- The isolation between the digital input pins and the V_{CC} pin ensures no back-powering to the supply rail.

 I_{off} protection circuitry of analog inputs/outputs

The NMUX1309 implements I_{off} protection circuitry on the analog switch pins, isolating those pins from the internal circuits when the supply is unpowered (i.e., $V_{CC} = 0$ V). The ESD protection diodes on the analog switch pins do not have a connection path to V_{CC} . If the analog switch pins are biased when the V_{CC} pin is unpowered:

- The high impedance of the analog pins minimizes input current leakage.
- The isolation between the analog pins and the V_{CC} pin ensures no back-powering to the supply rail.
- The high impedance of the analog switch path itself minimizes signal coupling across the switch.

9. Limiting values

Table 5. Limiting values

In accordance with the Absolute Maximum Rating System (IEC 60134). Voltages are referenced to GND (ground = 0 V).

Symbol	Parameter	Conditions	Min	Max	Unit
V_{CC}	supply voltage		-0.5	+6.0	V
V_I	input voltage	E, S0, S1 [1]	-0.5	+6.0	V
V_{SW}	switch voltage	nYn, nZ [2]	-0.5	$V_{CC} + 0.5$	V
I_{SW}	switch current	nYn, nZ; $V_{SW} > -0.5$ V or $V_{SW} < V_{CC} + 0.5$ V; $T_{amb} = -40$ °C to +85 °C	-50	+50	mA
		nYn, nZ; $V_{SW} > -0.5$ V or $V_{SW} < V_{CC} + 0.5$ V; $T_{amb} = -40$ °C to +125 °C	-25	+25	mA
I_I	input current	E, S0, S1	-30	30	mA
I_{GND}	ground current		-100	100	mA
T_{stg}	storage temperature		-65	+150	°C
P_{tot}	total power dissipation	$T_{amb} = -40$ °C to +125 °C [3]	-	500	mW
T_j	junction temperature		-	+150	°C

- [1] The minimum and maximum input voltage rating may be exceeded if the input clamping current rating is observed.
 [2] The minimum and maximum switch voltage rating may be exceeded if the switch clamping current rating is observed.
 [3] For SOT403-1 (TSSOP16) package: P_{tot} derates linearly with 8.5 mW/K above 91 °C.
 For SOT763-1 (DHVQFN16) package: P_{tot} derates linearly with 11.2 mW/K above 106 °C.

10. Recommended operating conditions

Table 6. Recommended operating conditions

Symbol	Parameter	Conditions	Min	Typ	Max	Unit
V_{CC}	supply voltage		1.50	-	5.5	V
V_I	input voltage	\bar{E} , S0, S1	0	-	5.5	V
V_{SW}	switch voltage	nYn, nZ; enable and disable mode	0	-	V_{CC}	V
		nYn, nZ; $V_{CC} = 0$ V	0	-	5.5	V
I_{SW}	switch current	nYn, nZ; $V_{SW} > GND$ or $V_{SW} < V_{CC}$; $T_{amb} = -40$ °C to $+85$ °C	-50	-	50	mA
		nYn, nZ; $V_{SW} > GND$ or $V_{SW} < V_{CC}$; $T_{amb} = -40$ °C to $+125$ °C	-25	-	25	mA
I_{SK}	switch clamping current	nYn, nZ; $V_{SW} < GND$ or $V_{SW} > V_{CC}$ [1]	-50	-	50	mA
I_{GND}	ground current		-100	-	100	mA
I_{INJ}	injected current	single off switch	-25	-	50	mA
		all off switches combined	-100	-	100	mA
T_{amb}	ambient temperature		-40	-	+125	°C

[1] If the $V_{SW} > V_{CC}$ or if $V_{SW} < GND$, the pin will be shunted to GND through an internal FET. The current must be limited within the specified value.

11. Static characteristics

Table 7. Static characteristics

At recommended operating conditions; voltages are referenced to GND (ground 0 V); for test circuit see Fig. 4.

Symbol	Parameter	Conditions	25 °C			-40 °C to +85 °C		-40 °C to +125 °C		Unit
			Min	Typ	Max	Min	Max	Min	Max	
Analog switch										
R_{ON}	ON resistance	$V_I = V_{CC}$ to GND; $I_{SW} = 0.5$ mA; $\bar{E} = V_{IL}$; see Fig. 5								
		$V_{CC} = 1.8$ V \pm 10%	-	450	1151	-	1245	-	1245	Ω
		$V_{CC} = 2.5$ V \pm 10%	-	160	388	-	419	-	436	Ω
		$V_{CC} = 3.3$ V \pm 10%	-	95	231	-	262	-	278	Ω
		$V_{CC} = 5$ V \pm 10%	-	60	146	-	167	-	178	Ω
ΔR_{ON}	ON resistance mismatch between channels	$V_I = 0.5V_{CC}$; $I_{SW} = 0.5$ mA; $\bar{E} = V_{IL}$								
		$V_{CC} = 1.8$ V \pm 10%	-	5	91	-	91	-	91	Ω
		$V_{CC} = 2.5$ V \pm 10%	-	4	35	-	39	-	41	Ω
		$V_{CC} = 3.3$ V \pm 10%	-	2	17	-	19	-	19	Ω
		$V_{CC} = 5$ V \pm 10%	-	1	11	-	11	-	12	Ω

1.5 V to 5.5 V, dual 4-channel switch analog multiplexer and demultiplexer with injection-current control

Symbol	Parameter	Conditions	25 °C			-40 °C to +85 °C		-40 °C to +125 °C		Unit
			Min	Typ	Max	Min	Max	Min	Max	
I _{S(OFF)}	OFF-state leakage current	nYn pins; switch off; $\bar{E} = V_{IH}$; $V_I = 0.8V_{CC}$ or $0.2V_{CC}$; $V_O = 0.2V_{CC}$ or $0.8V_{CC}$; see Fig. 3								
		$V_{CC} = 1.8 V \pm 10\%$	-	± 1	-	-25	25	-800	800	nA
		$V_{CC} = 2.5 V \pm 10\%$	-	± 1	-	-25	25	-800	800	nA
		$V_{CC} = 3.3 V \pm 10\%$	-	± 1	-	-25	25	-800	800	nA
		$V_{CC} = 5 V \pm 10\%$	-	± 1	-	-25	25	-800	800	nA
		Z pins; switch off; $\bar{E} = V_{IH}$; $V_I = 0.8V_{CC}$ or $0.2V_{CC}$; $V_O = 0.2V_{CC}$ or $0.8V_{CC}$; see Fig. 3								
		$V_{CC} = 1.8 V \pm 10\%$	-	± 1	-	-45	45	-800	800	nA
		$V_{CC} = 2.5 V \pm 10\%$	-	± 1	-	-45	45	-800	800	nA
I _{S(ON)}	ON-state leakage current	nZ, nYn pins; switch on; $\bar{E} = V_{IL}$; $V_I = V_O = 0.8V_{CC}$ or $V_I = V_O = 0.2V_{CC}$; see Fig. 4								
		$V_{CC} = 1.8 V \pm 10\%$	-	± 1	-	-45	45	-800	800	nA
		$V_{CC} = 2.5 V \pm 10\%$	-	± 1	-	-45	45	-800	800	nA
		$V_{CC} = 3.3 V \pm 10\%$	-	± 1	-	-45	45	-800	800	nA
C _{SW}	switch capacitance	nYn pins, OFF-state; $V_I = 0.5V_{CC}$; $f = 1$ MHz								
		$V_{CC} = 1.8 V \pm 10\%$	-	4	10	-	10	-	10	pF
		$V_{CC} = 2.5 V \pm 10\%$	-	4	9	-	9	-	9	pF
		$V_{CC} = 3.3 V \pm 10\%$	-	4	9	-	9	-	9	pF
		$V_{CC} = 5 V \pm 10\%$	-	4	9	-	9	-	9	pF
		nZ pins, OFF-state; $V_I = 0.5V_{CC}$; $f = 1$ MHz								
		$V_{CC} = 1.8 V \pm 10\%$	-	10	23	-	23	-	23	pF
		$V_{CC} = 2.5 V \pm 10\%$	-	10	22	-	22	-	22	pF
		$V_{CC} = 3.3 V \pm 10\%$	-	9	21	-	22	-	22	pF
		$V_{CC} = 5 V \pm 10\%$	-	9	20	-	20	-	20	pF
		nZ, nYn pins; ON-state; $V_I = 0.5V_{CC}$; $f = 1$ MHz								
		$V_{CC} = 1.8 V \pm 10\%$	-	16	31	-	32	-	32	pF
$V_{CC} = 2.5 V \pm 10\%$	-	16	31	-	31	-	31	pF		
$V_{CC} = 3.3 V \pm 10\%$	-	16	30	-	31	-	31	pF		
$V_{CC} = 5 V \pm 10\%$	-	15	29	-	30	-	30	pF		

1.5 V to 5.5 V, dual 4-channel switch analog multiplexer and demultiplexer with injection-current control

Symbol	Parameter	Conditions	25 °C			-40 °C to +85 °C		-40 °C to +125 °C		Unit	
			Min	Typ	Max	Min	Max	Min	Max		
Power supply											
I _{CC}	supply current	E, Sn inputs; V _I = GND or V _{CC}									
			V _{CC} = 1.8 V ± 10%	-	-	1	-	1	-	1	µA
			V _{CC} = 2.5 V ± 10%	-	-	1	-	1	-	1	µA
			V _{CC} = 3.3 V ± 10%	-	-	1	-	1	-	1	µA
			V _{CC} = 5 V ± 10%	-	-	1	-	1	-	1	µA

Table 8. Static characteristics

At recommended operating conditions; voltages are referenced to GND (ground 0 V); for test circuit see Fig. 5.

Symbol	Parameter	Conditions	-40 to +125 °C			Unit	
			Min	Typ [1]	Max		
Injection current coupling							
ΔV _O	output voltage variation	I _{SW} ≤ 1 mA; R _S ≤ 3.9 kΩ [2] [3]					
			V _{CC} = 1.8 V ± 10%	-	0.1	1	mV
			V _{CC} = 3.3 V ± 10%	-	0.2	1	mV
			V _{CC} = 5 V ± 10%	-	0.4	2	mV
		I _{SW} ≤ 10 mA; R _S ≤ 3.9 kΩ [2] [3]					
			V _{CC} = 1.8 V ± 10%	-	0.1	2	mV
			V _{CC} = 3.3 V ± 10%	-	0.2	2	mV
			V _{CC} = 5 V ± 10%	-	0.4	2	mV
		I _{SW} ≤ 1 mA; R _S ≤ 20 kΩ [2][3]					
			V _{CC} = 1.8 V ± 10%	-	0.1	2	mV
			V _{CC} = 3.3 V ± 10%	-	0.2	2	mV
			V _{CC} = 5 V ± 10%	-	0.4	2	mV
		I _{SW} ≤ 10 mA; R _S ≤ 20 kΩ [2][3]					
			V _{CC} = 1.8 V ± 10%	-	0.1	5	mV
V _{CC} = 3.3 V ± 10%	-		0.2	5	mV		
	V _{CC} = 5 V ± 10%	-	0.4	5	mV		
Logic inputs							
V _{IH}	HIGH-level input voltage	V _{CC} = 1.8 V ± 10%	0.99	-	5.5	V	
		V _{CC} = 2.5 V ± 10%	1.08	-	5.5	V	
		V _{CC} = 3.3 V ± 10%	1.15	-	5.5	V	
		V _{CC} = 5 V ± 10%	1.32	-	5.5	V	
V _{IL}	LOW-level input voltage	V _{CC} = 1.8 V ± 10%	0	-	0.53	V	
		V _{CC} = 2.5 V ± 10%	0	-	0.61	V	
		V _{CC} = 3.3 V ± 10%	0	-	0.68	V	
		V _{CC} = 5 V ± 10%	0	-	0.79	V	
I _{IH}	HIGH-level input current	V _I = 1.8 V or V _{CC}	-	-	1	µA	
I _{IL}	LOW-level input current	V _I = 0 V	-1	-	-	µA	

1.5 V to 5.5 V, dual 4-channel switch analog multiplexer and demultiplexer with injection-current control

Symbol	Parameter	Conditions	-40 to +125 °C			Unit
			Min	Typ [1]	Max	
C _i	input capacitance	S0, S1, and \bar{E} pins; V _i = 0 V, 1.8 V, or V _{CC} ; f = 1 MHz	-	1.5	3.5	pF

- [1] Typical values are measured at T_{amb} = 25 °C.
- [2] ΔV_O here is the maximum variation of output voltage of an enabled analog channel when current is injected into any disabled channel.
- [3] I_{SW} = total current injected into all disabled channels.

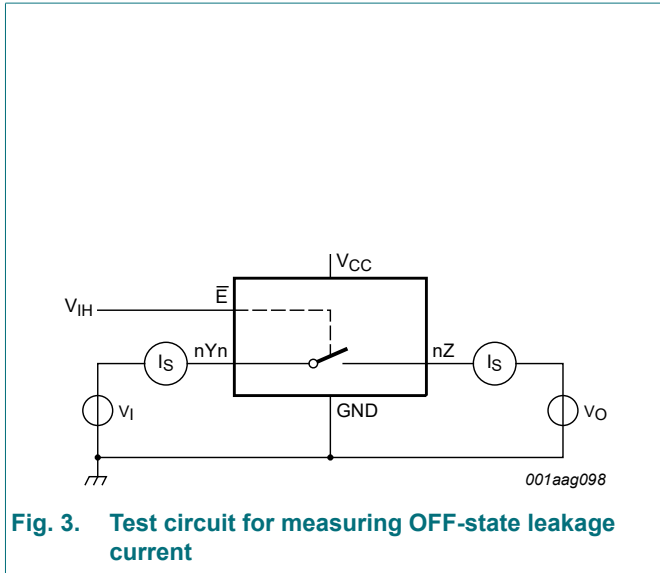


Fig. 3. Test circuit for measuring OFF-state leakage current

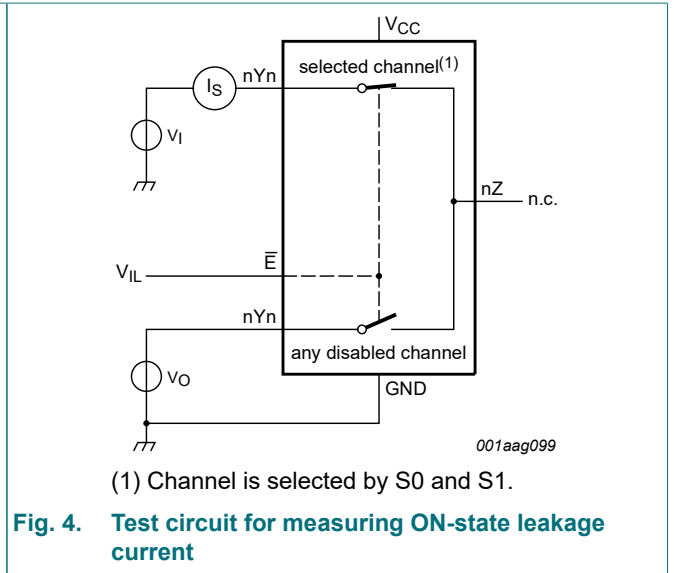
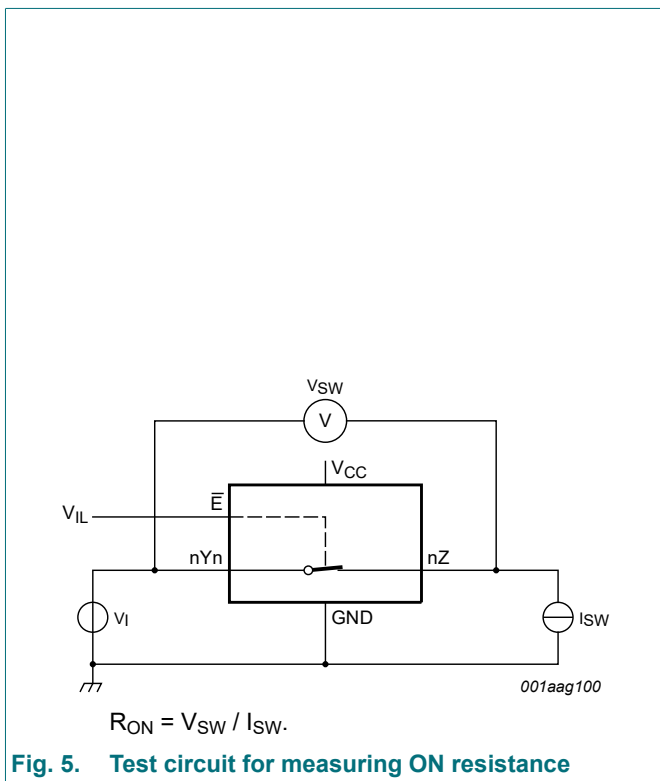
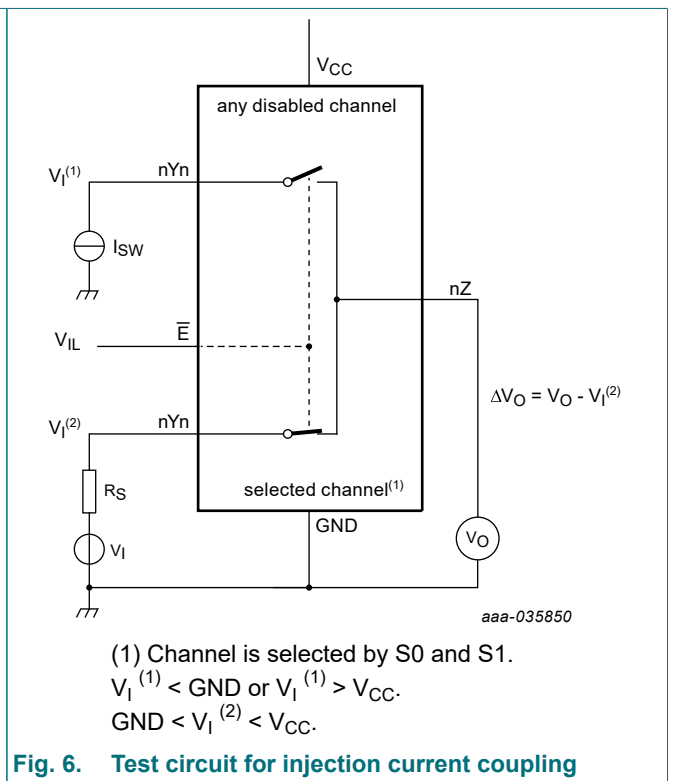


Fig. 4. Test circuit for measuring ON-state leakage current



$$R_{ON} = V_{SW} / I_{SW}$$

Fig. 5. Test circuit for measuring ON resistance



- (1) Channel is selected by S0 and S1.
- V_i⁽¹⁾ < GND or V_i⁽¹⁾ > V_{CC}.
- GND < V_i⁽²⁾ < V_{CC}.

Fig. 6. Test circuit for injection current coupling

12. Dynamic characteristics

Table 9. Dynamic characteristics

At recommended operating conditions; voltages are referenced to GND (ground 0 V); for test circuit see Fig. 10.

Symbol	Parameter	Conditions	25 °C			-40 °C to +85 °C		-40 °C to +125 °C		Unit
			Min	Typ	Max	Min	Max	Min	Max	
t_{pd}	propagation delay	nZ to nYn, nYn to nZ; $C_L = 50$ pF; see Fig. 7 [1]								
		$V_{CC} = 1.8$ V \pm 10%	-	9	22	-	25	-	26	ns
		$V_{CC} = 2.5$ V \pm 10%	-	6	10	-	11	-	12	ns
		$V_{CC} = 3.3$ V \pm 10%	-	4	6	-	7	-	8	ns
		$V_{CC} = 5.0$ V \pm 10%; $C_L = 15$ pF	-	2	4	-	5	-	5	ns
t_{pd}	transition time between inputs	Sn to nZ; $R_L = 10$ k Ω ; $C_L = 50$ pF; see Fig. 8 [1]								
		$V_{CC} = 1.8$ V \pm 10%	-	52	93	-	93	-	93	ns
		$V_{CC} = 2.5$ V \pm 10%	-	40	67	-	74	-	74	ns
		$V_{CC} = 3.3$ V \pm 10%	-	36	61	-	71	-	71	ns
		$V_{CC} = 5.0$ V \pm 10%	-	33	60	-	70	-	70	ns
		$V_{CC} = 5.0$ V \pm 10%; $C_L = 15$ pF	-	31	58	-	70	-	70	ns
		Sn to nYn; $R_L = 10$ k Ω ; $C_L = 50$ pF; see Fig. 8 [1]								
		$V_{CC} = 1.8$ V \pm 10%	-	108	359	-	363	-	364	ns
		$V_{CC} = 2.5$ V \pm 10%	-	96	349	-	351	-	351	ns
		$V_{CC} = 3.3$ V \pm 10%	-	93	344	-	344	-	344	ns
		$V_{CC} = 5.0$ V \pm 10%	-	85	335	-	335	-	336	ns
		$V_{CC} = 5.0$ V \pm 10%; $C_L = 15$ pF	-	40	93	-	94	-	94	ns
t_{en}	enable time	\bar{E} to nZ, \bar{E} to nYn; $R_L = 10$ k Ω ; $C_L = 50$ pF; see Fig. 9 [2]								
		$V_{CC} = 1.8$ V \pm 10%	-	15	25	-	27	-	29	ns
		$V_{CC} = 2.5$ V \pm 10%	-	12	17	-	18	-	18	ns
		$V_{CC} = 3.3$ V \pm 10%	-	12	17	-	18	-	18	ns
		$V_{CC} = 5.0$ V \pm 10%	-	12	17	-	18	-	18	ns
$V_{CC} = 5.0$ V \pm 10%; $C_L = 15$ pF	-	11	16	-	17	-	17	ns		

1.5 V to 5.5 V, dual 4-channel switch analog multiplexer and demultiplexer with injection-current control

Symbol	Parameter	Conditions	25 °C			-40 °C to +85 °C		-40 °C to +125 °C		Unit
			Min	Typ	Max	Min	Max	Min	Max	
t _{dis}	disable time	\bar{E} to nZ, \bar{E} to nYn; R _L = 10 kΩ; C _L = 50 pF; S1 = GND; see Fig. 9 [3]								
		V _{CC} = 1.8 V ± 10%	-	23	47	-	48	-	49	ns
		V _{CC} = 2.5 V ± 10%	-	16	37	-	37	-	37	ns
		V _{CC} = 3.3 V ± 10%	-	16	37	-	37	-	37	ns
		V _{CC} = 5 V ± 10%	-	16	31	-	32	-	33	ns
		V _{CC} = 5.0 V ± 10%; C _L = 15 pF	-	3	5	-	5	-	6	ns
		\bar{E} to nYn; R _L = 10 kΩ; C _L = 50 pF; S1 = V _{CC} ; see Fig. 9								
		V _{CC} = 1.8 V ± 10%	-	13	72	-	72	-	72	ns
		V _{CC} = 2.5 V ± 10%	-	10	70	-	70	-	71	ns
		V _{CC} = 3.3 V ± 10%	-	9	70	-	70	-	70	ns
		V _{CC} = 5 V ± 10%	-	7	69	-	69	-	70	ns
		V _{CC} = 5.0 V ± 10%; C _L = 15 pF	-	5	34	-	34	-	35	ns
t _{b-m}	break-before-make time	R _L = 10 kΩ; C _L = 15 pF; nYn to nZ								
		V _{CC} = 1.8 V ± 10%	1	35	-	1	-	1	-	ns
		V _{CC} = 2.5 V ± 10%	1	30	-	1	-	1	-	ns
		V _{CC} = 3.3 V ± 10%	1	29	-	1	-	1	-	ns
		V _{CC} = 5 V ± 10%	1	27	-	1	-	1	-	ns

[1] t_{pd} is the same as t_{PLH} and t_{PHL}.
 [2] t_{en} is the same as t_{PZH} and t_{PZL}.
 [3] t_{dis} is the same as t_{PLZ} and t_{PHZ}.

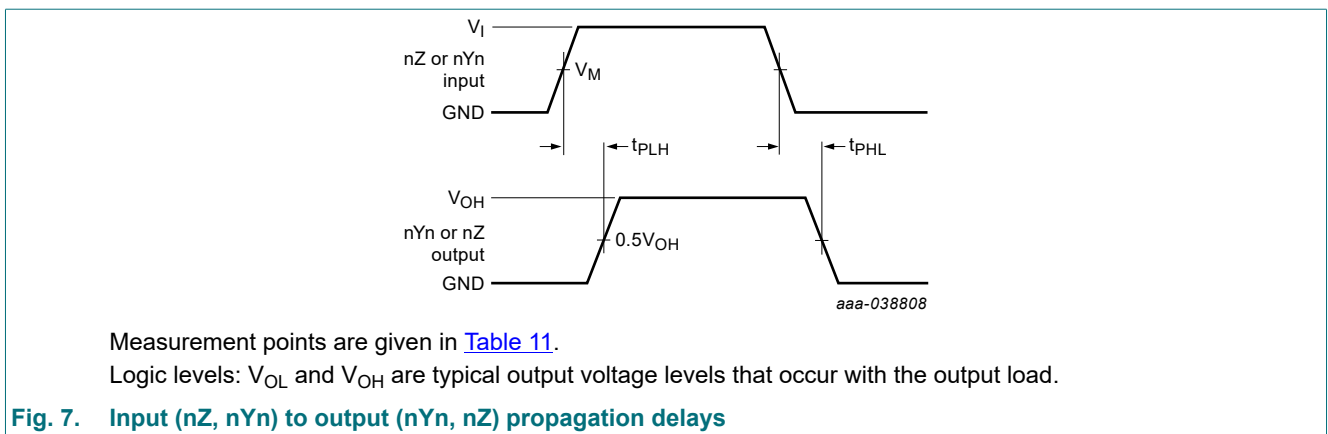
Table 10. Dynamic characteristics

Symbol	Parameter	Conditions	T _{amb} = -40 °C to +125 °C			Unit
			Min	Typ	Max	
Q _{inj}	charge injection	V _I = 0.5V _{CC} ; R _S = 0 Ω; C _L = 100 pF				
		V _{CC} = 1.8 V ± 10%	-	1	-	pC
		V _{CC} = 2.5 V ± 10%	-	2	-	pC
		V _{CC} = 3.3 V ± 10%	-	3	-	pC
		V _{CC} = 5 V ± 10%	-	8	-	pC

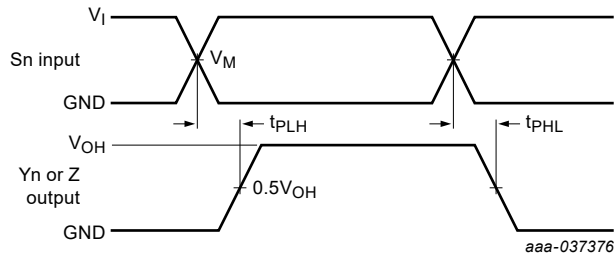
1.5 V to 5.5 V, dual 4-channel switch analog multiplexer and demultiplexer with injection-current control

Symbol	Parameter	Conditions	T _{amb} = -40 °C to +125 °C			Unit	
			Min	Typ	Max		
α _{iso}	isolation (OFF-state)	V _{bias} = 0.5V _{CC} ; V _I = 200 mVpp; R _L = 50 Ω; C _L = 5 pF; f = 100 kHz					
			V _{CC} = 1.8 V ± 10%	-	-105	-	dB
			V _{CC} = 2.5 V ± 10%	-	-105	-	dB
			V _{CC} = 3.3 V ± 10%	-	-105	-	dB
			V _{CC} = 5 V ± 10%	-	-105	-	dB
		V _{bias} = 0.5V _{CC} ; V _I = 200 mVpp; R _L = 50 Ω; C _L = 5 pF; f = 1 MHz	V _{CC} = 1.8 V ± 10%	-	-80	-	dB
			V _{CC} = 2.5 V ± 10%	-	-80	-	dB
			V _{CC} = 3.3 V ± 10%	-	-80	-	dB
			V _{CC} = 5 V ± 10%	-	-80	-	dB
X _{talk}	crosstalk	V _{bias} = 0.5V _{CC} ; V _I = 200 mVpp; R _L = 50 Ω; C _L = 5 pF; f = 100 kHz					
			V _{CC} = 1.8 V ± 10%	-	-105	-	dB
			V _{CC} = 2.5 V ± 10%	-	-105	-	dB
			V _{CC} = 3.3 V ± 10%	-	-105	-	dB
			V _{CC} = 5 V ± 10%	-	-105	-	dB
		V _{bias} = 0.5V _{CC} ; V _I = 200 mVpp; R _L = 50 Ω; C _L = 5 pF; f = 1 MHz	V _{CC} = 1.8 V ± 10%	-	-80	-	dB
			V _{CC} = 2.5 V ± 10%	-	-80	-	dB
			V _{CC} = 3.3 V ± 10%	-	-80	-	dB
			V _{CC} = 5 V ± 10%	-	-80	-	dB
BW	Bandwidth	V _{bias} = 0.5V _{CC} ; V _I = 200 mVpp; R _L = 50 Ω; C _L = 5 pF					
			V _{CC} = 1.8 V ± 10%	-	330	-	MHz
			V _{CC} = 2.5 V ± 10%	-	355	-	MHz
			V _{CC} = 3.3 V ± 10%	-	365	-	MHz
			V _{CC} = 5 V ± 10%	-	380	-	MHz

12.1. Waveforms and test circuit



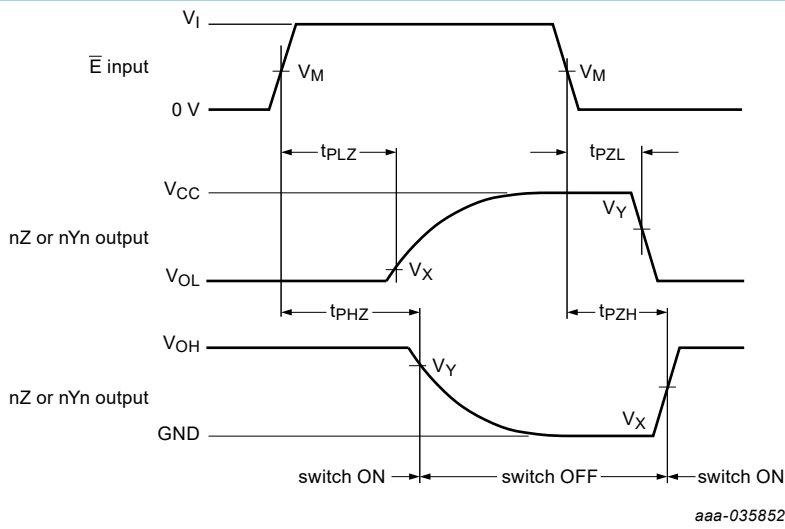
1.5 V to 5.5 V, dual 4-channel switch analog multiplexer and demultiplexer with injection-current control



Measurement points are given in [Table 11](#).

Logic levels: V_{OL} and V_{OH} are typical output voltage levels that occur with the output load.

Fig. 8. Input (Sn) to output (nYn, nZ) propagation delays



Measurement points are shown in [Table 11](#).

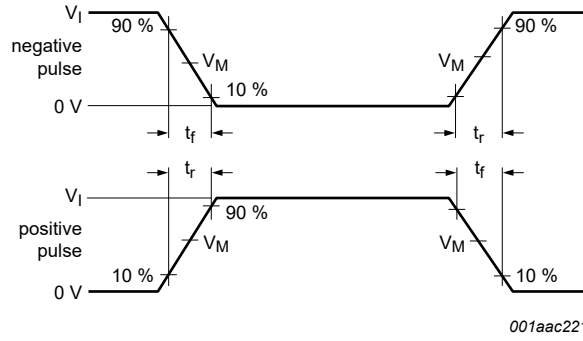
Logic levels: V_{OL} and V_{OH} are typical output voltage levels that occur with the output load.

Fig. 9. Enable and disable times

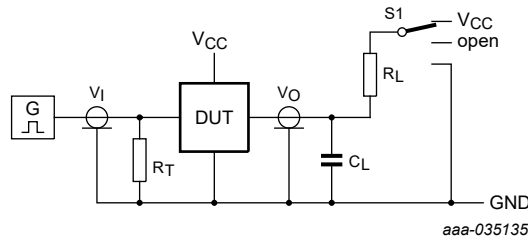
Table 11. Measurement points

Input		Output	
V_M	V_I	V_X	V_Y
$0.5 \times V_{CC}$	V_{CC}	$V_{OL} + 0.1(V_{CC} - V_{OL})$	$0.9 \times V_{OH}$

1.5 V to 5.5 V, dual 4-channel switch analog multiplexer and demultiplexer with injection-current control



a. Input pulse definition



Test data is given in [Table 12](#).

Definitions for test circuit:

R_L = load resistance;

C_L = load capacitance including jig and probe capacitance;

R_T = termination resistance should be equal to the output impedance Z_O of the pulse generator.

b. Test circuit

Fig. 10. Input pulse definition and test circuit

Table 12. Test data

Test	Input			Output		S1 position
	Control \bar{E} , Sn	Switch nYn (nZ)	t_r , t_f	Switch nZ (nYn)		
	V_I	V_I		C_L	R_L	
t_{PHL} , t_{PLH}	V_{CC}	V_{CC}	< 5 ns	50 pF	-	open
t_{PHZ} , t_{PZH}	V_{CC}	V_{CC}	< 5 ns	50 pF	10 k Ω	GND
t_{PLZ} , t_{PZL}	V_{CC}	V_{CC}	< 5 ns	50 pF	10 k Ω	V_{CC}

13. Application information

NMUX1309

The NMUX1309 is a versatile CMOS bi-directional dual (4:1) analog switch designed for general-purpose use, operating within a voltage range of 1.5 V to 5.5 V. It features 5.5V overvoltage tolerant digital inputs and is compatible with 1.8 V CMOS levels, eliminating the need for voltage translation.

Each analog signal pin on the NMUX1309 incorporates injection current control circuitry. This innovative feature serves to isolate overvoltage spikes on disconnected analog signal pins, preventing them from affecting the connected analog signal path. Two other protective features include Fail-Safe-Logic and Power-off-Protection. These attributes make the NMUX130X family of devices the ideal choice for applications aiming to simplify signal management and reduce system complexity, resulting in a lower component count and a smaller PCB area. This utilization allows users to adopt a design approach centered around modularity, reuse, and scalability.

Typical application schematic

A typical example is provided in Fig. 11. In this instance, two sensors or voltage inputs are simultaneously sampled, such as 1Y0 and 2Y0, while sequentially stepping to the next two inputs based on the control input values. These inputs are read and accessed by the input of the SAR ('Successive Approximation Register') ADC. In the example below, the SAR ADC is integrated in the Microcontroller – ADC1 and ADC2. The operational amplifiers serve the purpose of satisfying the SAR ADCs recommendation of being driven with a low-impedance source, especially when input sensors or signals have large output impedance. This enhancement improves the performance of the SAR ADC, ensuring fast and accurate conversions while minimizing errors during the sampling process. Additionally, the op-amp eliminates potential error sources, such as ADC input leakage current, that can cause a small drop, resulting in a minor voltage error across the analog multiplexer.

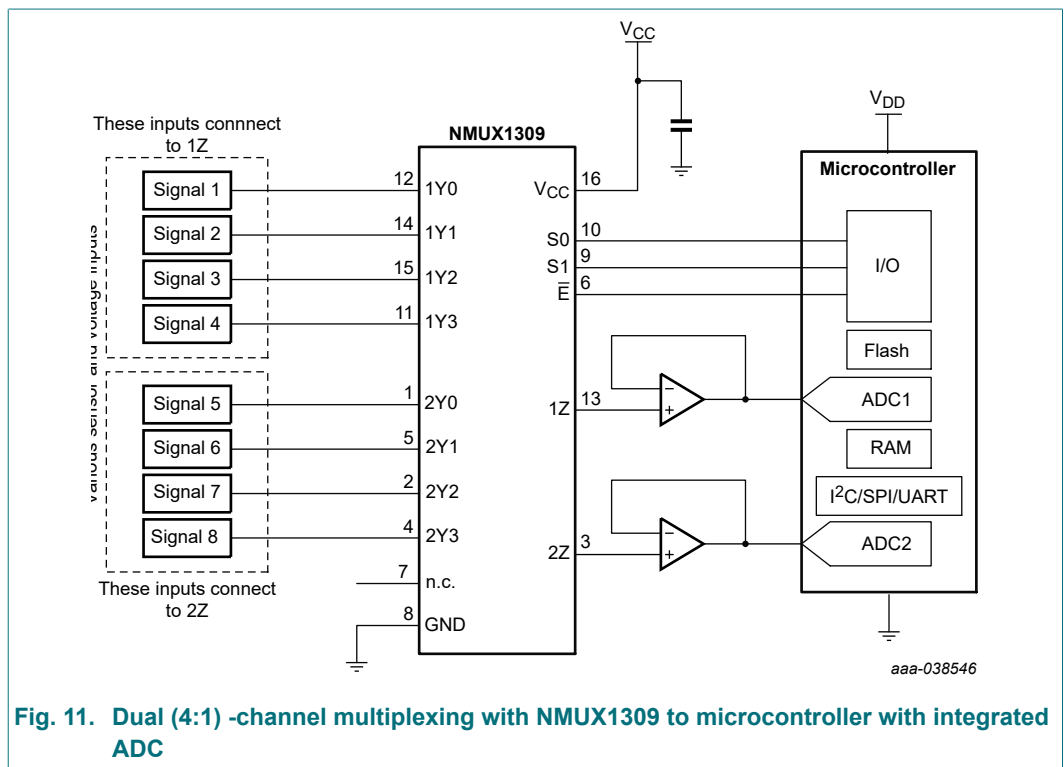


Fig. 11. Dual (4:1) -channel multiplexing with NMUX1309 to microcontroller with integrated ADC

1.5 V to 5.5 V, dual 4-channel switch analog multiplexer and demultiplexer with injection-current control

The benefits of this design type include the capability to route and switch multiple analog signals through two output channels. This is particularly crucial when the number of ADC input channels is limited.

Table 13. Example design parameters with NMUX1309

Important Design Parameters	Example Value
Supply range (V _{CC})	1.5 V to 5.5 V
Analog input voltage range	0 V to V _{CC} (rail-to-rail)
Control input logic	1.8 V compatible (5.5 V overvoltage tolerant)
I _{SW} independent switch current (maximum)	50 mA
Total analog input continuous current to GND (maximum)	100 mA

Additional example application

The circuit shown in Fig. 12 highlights the use of the NMUX1309 to create a high-precision selectable gain circuit. It eliminates error sources attributed to on-resistance and non-linearities by establishing a Kelvin sense connection from the second-stage buffer to the selected connected inputs.

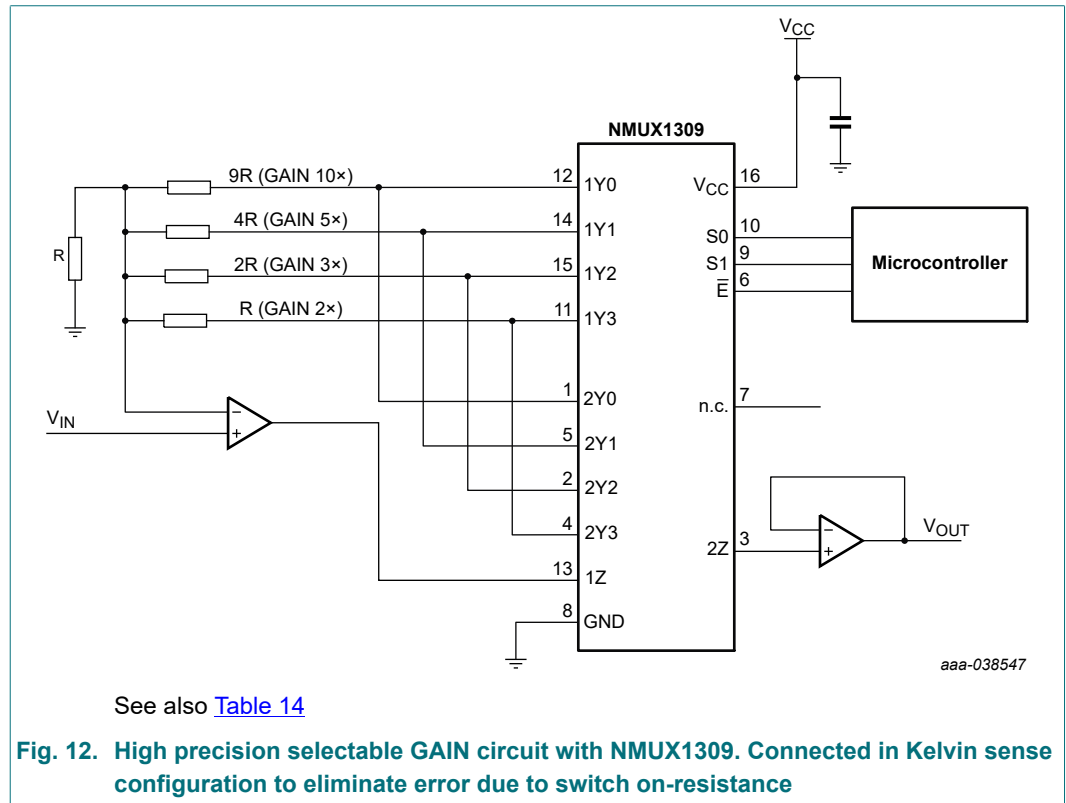


Table 14. Gain select

S1	S0	Gain
0	0	$V_{OUT} = 10x V_{IN}$
0	1	$V_{OUT} = 5x V_{IN}$
1	0	$V_{OUT} = 3x V_{IN}$
1	1	$V_{OUT} = 2x V_{IN}$

NMUX1309 layout example

The image provided below (Fig. 13) offers a glimpse into an example PCB layout with the (PW) package. Bypass capacitors should be positioned near the V_{CC} pin, and the GND pin should be connected to external/internal GND planes. A uniform GND plane helps in reducing noise and minimizing loop inductance, thereby ensuring optimal performance.

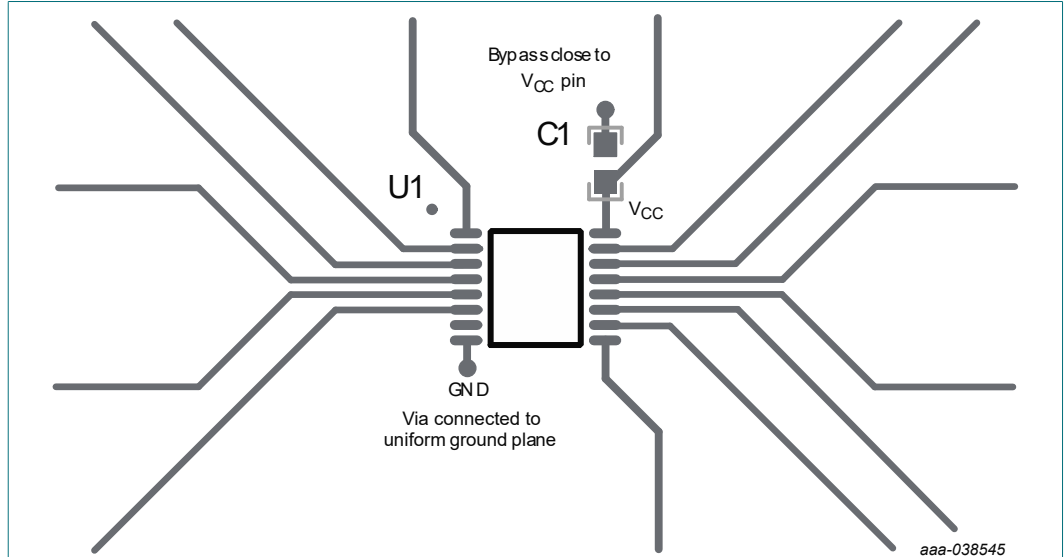


Fig. 13. NMUX1309 layout example with NMUX1309PW (TSSOP16/SOT403-1) package

Layout recommendations

As with all board designs, proper layout techniques should be employed. Some quick good layout practices and considerations are listed below for quick reference.

- Ceramic capacitors with low ESR should be used to properly decouple or bypass power-supply pins. Ceramic capacitors with high temperature coefficients and low dissipation factors include X5R, X7R and NP0. The recommended minimum value is 0.1 μF .
- For improved noise suppression, additional bypass capacitors can be implemented. It is a common practice to use two different capacitor values to ensure proper filtering of both low-frequency and high-frequency transients. The smaller capacitor, typically in a 0402 package, is placed very near the device pin, while the larger capacitor is positioned farther away.
- To minimize coupling and improve performance all switching nets should travel across a uniform ground plane. Reducing crosstalk can also be achieved by separating traces with a small polygon ground plane.
- Net traces should only have serpentine or 45° bend. Sharper bends, such as 90° should be avoided.

14. Package outline

TSSOP16: plastic thin shrink small outline package; 16 leads; body width 4.4 mm

SOT403-1

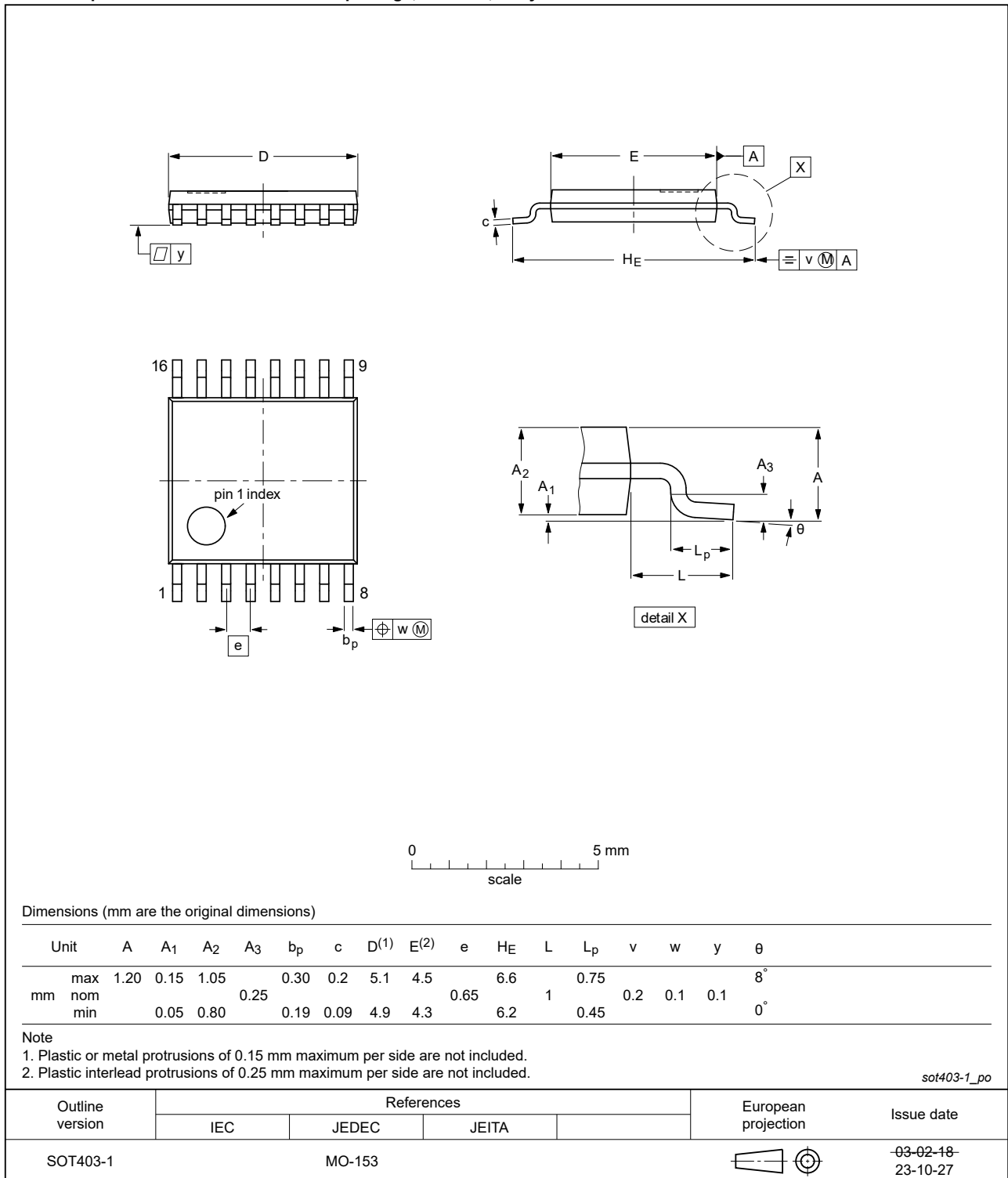


Fig. 14. Package outline SOT403-1 (TSSOP16)

1.5 V to 5.5 V, dual 4-channel switch analog multiplexer and demultiplexer with injection-current control

DHVQFN16: plastic dual in-line compatible thermal enhanced very thin quad flat package; no leads; 16 terminals; body 2.5 x 3.5 x 0.85 mm

SOT763-1



Fig. 15. Package outline SOT763-1 (DHVQFN16)

15. Abbreviations

Table 15. Abbreviations

Acronym	Description
CDM	Charged Device Model
CMOS	Complementary Metal Oxide Semiconductor
DUT	Device Under Test
ESD	ElectroStatic Discharge
HBM	Human Body Model

16. Revision history

Table 16. Revision history

Document ID	Release date	Data sheet status	Change notice	Supersedes
NMUX1309 v. 1.2	20240416	Product data sheet	-	NMUX1309 v. 1.1
Modification		<ul style="list-style-type: none"> Section 7.1: Pin configuration drawing of the SOT403-1/TSSOP16 package corrected. (Errata) 		
NMUX1309 v. 1.1	20240221	Product data sheet	-	NMUX1309 v. 1
Modification		<ul style="list-style-type: none"> Fig. 10: Errata. Section 5: added. 		
NMUX1309 v. 1	20240118	Product data sheet	-	-

17. Legal information

Data sheet status

Document status [1][2]	Product status [3]	Definition
Objective [short] data sheet	Development	This document contains data from the objective specification for product development.
Preliminary [short] data sheet	Qualification	This document contains data from the preliminary specification.
Product [short] data sheet	Production	This document contains the product specification.

- [1] Please consult the most recently issued document before initiating or completing a design.
- [2] The term 'short data sheet' is explained in section "Definitions".
- [3] The product status of device(s) described in this document may have changed since this document was published and may differ in case of multiple devices. The latest product status information is available on the internet at <https://www.nexperia.com>.

Definitions

Draft — The document is a draft version only. The content is still under internal review and subject to formal approval, which may result in modifications or additions. Nexperia does not give any representations or warranties as to the accuracy or completeness of information included herein and shall have no liability for the consequences of use of such information.

Short data sheet — A short data sheet is an extract from a full data sheet with the same product type number(s) and title. A short data sheet is intended for quick reference only and should not be relied upon to contain detailed and full information. For detailed and full information see the relevant full data sheet, which is available on request via the local Nexperia sales office. In case of any inconsistency or conflict with the short data sheet, the full data sheet shall prevail.

Product specification — The information and data provided in a Product data sheet shall define the specification of the product as agreed between Nexperia and its customer, unless Nexperia and customer have explicitly agreed otherwise in writing. In no event however, shall an agreement be valid in which the Nexperia product is deemed to offer functions and qualities beyond those described in the Product data sheet.

Disclaimers

Limited warranty and liability — Information in this document is believed to be accurate and reliable. However, Nexperia does not give any representations or warranties, expressed or implied, as to the accuracy or completeness of such information and shall have no liability for the consequences of use of such information. Nexperia takes no responsibility for the content in this document if provided by an information source outside of Nexperia.

In no event shall Nexperia be liable for any indirect, incidental, punitive, special or consequential damages (including - without limitation - lost profits, lost savings, business interruption, costs related to the removal or replacement of any products or rework charges) whether or not such damages are based on tort (including negligence), warranty, breach of contract or any other legal theory.

Notwithstanding any damages that customer might incur for any reason whatsoever, Nexperia's aggregate and cumulative liability towards customer for the products described herein shall be limited in accordance with the Terms and conditions of commercial sale of Nexperia.

Right to make changes — Nexperia reserves the right to make changes to information published in this document, including without limitation specifications and product descriptions, at any time and without notice. This document supersedes and replaces all information supplied prior to the publication hereof.

Suitability for use — Nexperia products are not designed, authorized or warranted to be suitable for use in life support, life-critical or safety-critical systems or equipment, nor in applications where failure or malfunction of an Nexperia product can reasonably be expected to result in personal

injury, death or severe property or environmental damage. Nexperia and its suppliers accept no liability for inclusion and/or use of Nexperia products in such equipment or applications and therefore such inclusion and/or use is at the customer's own risk.

Quick reference data — The Quick reference data is an extract of the product data given in the Limiting values and Characteristics sections of this document, and as such is not complete, exhaustive or legally binding.

Applications — Applications that are described herein for any of these products are for illustrative purposes only. Nexperia makes no representation or warranty that such applications will be suitable for the specified use without further testing or modification.

Customers are responsible for the design and operation of their applications and products using Nexperia products, and Nexperia accepts no liability for any assistance with applications or customer product design. It is customer's sole responsibility to determine whether the Nexperia product is suitable and fit for the customer's applications and products planned, as well as for the planned application and use of customer's third party customer(s). Customers should provide appropriate design and operating safeguards to minimize the risks associated with their applications and products.

Nexperia does not accept any liability related to any default, damage, costs or problem which is based on any weakness or default in the customer's applications or products, or the application or use by customer's third party customer(s). Customer is responsible for doing all necessary testing for the customer's applications and products using Nexperia products in order to avoid a default of the applications and the products or of the application or use by customer's third party customer(s). Nexperia does not accept any liability in this respect.

Limiting values — Stress above one or more limiting values (as defined in the Absolute Maximum Ratings System of IEC 60134) will cause permanent damage to the device. Limiting values are stress ratings only and (proper) operation of the device at these or any other conditions above those given in the Recommended operating conditions section (if present) or the Characteristics sections of this document is not warranted. Constant or repeated exposure to limiting values will permanently and irreversibly affect the quality and reliability of the device.

Terms and conditions of commercial sale — Nexperia products are sold subject to the general terms and conditions of commercial sale, as published at <http://www.nexperia.com/profile/terms>, unless otherwise agreed in a valid written individual agreement. In case an individual agreement is concluded only the terms and conditions of the respective agreement shall apply. Nexperia hereby expressly objects to applying the customer's general terms and conditions with regard to the purchase of Nexperia products by customer.

No offer to sell or license — Nothing in this document may be interpreted or construed as an offer to sell products that is open for acceptance or the grant, conveyance or implication of any license under any copyrights, patents or other industrial or intellectual property rights.

Export control — This document as well as the item(s) described herein may be subject to export control regulations. Export might require a prior authorization from competent authorities.

Non-automotive qualified products — Unless this data sheet expressly states that this specific Nexperia product is automotive qualified, the product is not suitable for automotive use. It is neither qualified nor tested in accordance with automotive testing or application requirements. Nexperia accepts no liability for inclusion and/or use of non-automotive qualified products in automotive equipment or applications.

In the event that customer uses the product for design-in and use in automotive applications to automotive specifications and standards, customer (a) shall use the product without Nexperia's warranty of the product for such automotive applications, use and specifications, and (b) whenever customer uses the product for automotive applications beyond Nexperia's specifications such use shall be solely at customer's own risk, and (c) customer fully indemnifies Nexperia for any liability, damages or failed product claims resulting from customer design and use of the product for automotive applications beyond Nexperia's standard warranty and Nexperia's product specifications.

Translations — A non-English (translated) version of a document is for reference only. The English version shall prevail in case of any discrepancy between the translated and English versions.

Trademarks

Notice: All referenced brands, product names, service names and trademarks are the property of their respective owners.

Contents

1. General description	1
2. Features and benefits	1
3. Applications	2
4. Ordering information	2
5. Marking	2
6. Functional diagram	2
7. Pinning information	4
7.1. Pinning.....	4
7.2. Pin description.....	4
8. Functional description	5
8.1. Overview.....	5
8.2. Key features.....	5
9. Limiting values	6
10. Recommended operating conditions	7
11. Static characteristics	7
12. Dynamic characteristics	11
12.1. Waveforms and test circuit.....	13
13. Application information	16
14. Package outline	19
15. Abbreviations	21
16. Revision history	21
17. Legal information	22

© Nexperia B.V. 2024. All rights reserved

For more information, please visit: <http://www.nexperia.com>

For sales office addresses, please send an email to: salesaddresses@nexperia.com

Date of release: 16 April 2024
