



# NEX90240-Q100

400 mA, 40 V, ultra-low  $I_q$  (5.3  $\mu$ A), low-dropout voltage regulator

Rev. 1 — 8 September 2025

Product data sheet

## 1. General description

The NEX90240-Q100 device is a low-dropout (LDO) linear regulator designed for applications with input voltages of up to 40 V. It features a typical quiescent current ( $I_q$ ) of only 5.3  $\mu$ A at light load and a typical shutdown current ( $I_{sd}$ ) of 300 nA when disabled. This makes the device ideal for powering always-on components, such as microcontroller units (MCUs) and Controller Area Network (CAN) or Local Interconnect Network (LIN) transceivers in standby or CAN-wake systems.

In battery-powered automotive applications, low  $I_q$  and  $I_{sd}$  are critical for saving energy and extending battery life. Always-on systems require ultra-low  $I_q$  across an extended temperature range to ensure sustained operation when the vehicle ignition is off.

In CAN-wake systems or certain sleep modes, maintaining an ultra-low  $I_{sd}$  is essential to minimize battery consumption even when the system is in sleep or disabled mode.

The device features integrated protections for short circuit, over-current, and thermal shutdown. It operates within an ambient temperature range of -40 °C to 125 °C and a junction temperature range of -40 °C to 150 °C.

Additionally, this device is available in an enhanced thermal package, HTSSOP8.

Table 1. Device information

Part number	Package	Body size (nom)
NEX90240-Q100	HTSSOP8	3.0 mm x 3.0 mm

## 2. Features and benefits

- Automotive product qualification in accordance with AEC-Q100 (Grade 1)
  - Temperature grade 1 ( $T_{amb}$ ): -40 °C to 125 °C
  - Junction temperature ( $T_j$ ): -40 °C to 150 °C
- Input voltage range: 3 V to 40 V (45 V transient)
- Output voltage: 5.2 V (fixed)
- Maximum output current: 400 mA
- Low dropout voltage:
  - 630 mV typical at 400 mA
- Low quiescent current ( $I_q$ ):
  - 5.3  $\mu$ A typical at light loads
  - 300 nA typical shutdown current
- Stable with a wide range of ceramic output-stability cap:
  - ESR from 0.001  $\Omega$  to 2  $\Omega$ ; output cap of 1  $\mu$ F to 220  $\mu$ F
- Various integrated fault protections:
  - Thermal shutdown
  - Short-circuit protection
  - Over-current protection
- Enhanced thermal package available:
  - SOT8062-1 (HTSSOP8):  $R_{\theta JA}$  = 62.3 °C/W

## 3. Applications

- Body control modules (BCM)
- Automotive lighting
- Automotive head units & clusters
- Telematics control units
- Powertrain of electric vehicles (EV) and hybrid electric vehicles (HEV)

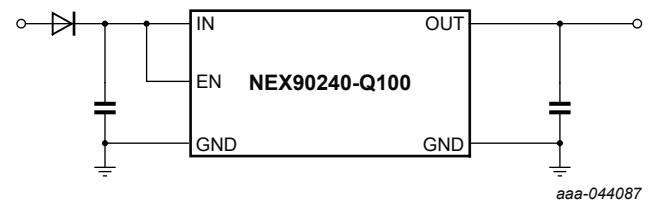


Fig. 1. Typical application

## 4. Ordering information

Table 2. Ordering information

Type number	Temperature range (T <sub>J</sub> )	Name	Description	Version
<a href="#">NEX90240BPA-Q100</a>	-40 °C to 150 °C	HTSSOP8	Plastic, thermal enhanced thin shrink small outline package; 8 leads, 0.65 mm pitch, 3 mm × 3 mm × 1.1 mm body	<a href="#">SOT8062-1</a>

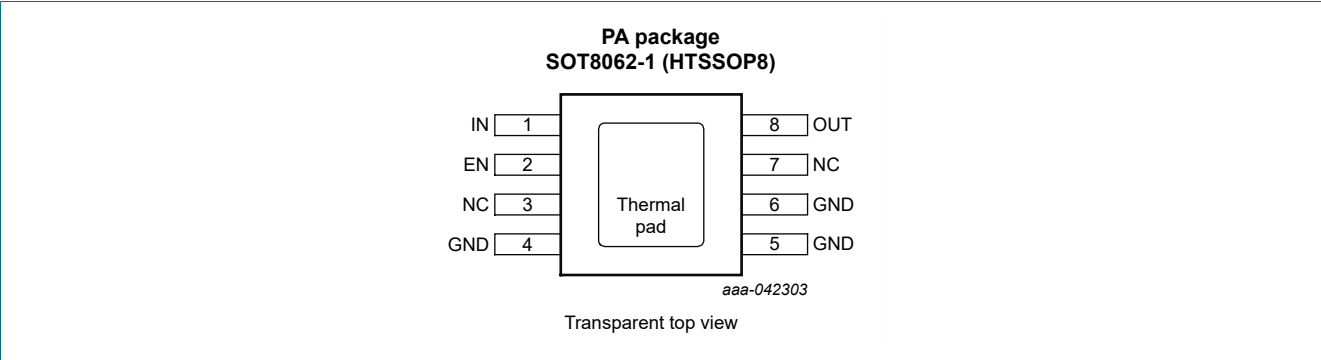
## 5. Marking

Table 3. Marking code

Type number	Marking code
NEX90240BPA-Q100	N240B

## 6. Pin configuration and description

### 6.1. Pin configuration



### 6.2. Pin description

Table 4. Pin description

Symbol	Pin	I/O	Description
IN	1	I	The input power-supply voltage pin should use a recommended value or a larger ceramic capacitor from IN to ground for optimal transient response and minimal input impedance. Place the input capacitor as close to the device's input as possible.
EN	2	I	The enable logic pin activates the device when at a high level and disables it at a low level. If this pin is connected to the IN pin or left floating (a pull-up resistor is not required), the device will be enabled.
NC	3	-	Not connected internally. This pin can be tied to ground for enhanced thermal dissipation or left floating.
NC	7	-	Internally connected. This pin can be tied to ground for enhanced thermal dissipation or left floating.
GND	4, 5, 6	G	Ground pin. Connect this pin to the thermal pad with a low-impedance connection.
OUT	8	O	The regulated output voltage pin requires a capacitor from OUT to ground for stability. For optimal transient response, use the recommended nominal value or a larger ceramic capacitor from OUT to ground. Place the output capacitor as close to the device's output as possible. If a high ESR capacitor is used, decouple the output with a 100 nF ceramic capacitor.
Thermal pad	pad	-	The exposed thermal pad should be soldered to GND for improved thermal performance.

7. Limiting values

Table 5. Limiting values

In accordance with the Absolute Maximum Rating System (IEC 60134). Voltages are referenced to GND (ground = 0 V).[1]

Symbol	Parameter	Conditions	Min	Max	Unit
V <sub>IN</sub>	input voltage		-0.3	45	V
V <sub>EN</sub>	enable voltage		-0.3	45	V
V <sub>OUT</sub>	output voltage		-0.3	6.6	V
T <sub>amb</sub>	ambient temperature		-40	125	°C
T <sub>j</sub>	junction temperature		-40	150	°C
T <sub>stg</sub>	storage temperature		-65	165	°C

[1] Stresses beyond those conditions under absolute maximum ratings may cause permanent damage to the device. These are stress ratings only and functional operation of the device at these or any other conditions beyond those indicated under recommended operating conditions is not implied. Exposure to absolute-maximum-rated conditions for extended periods may affect device reliability.

8. ESD ratings

Table 6. ESD ratings

Symbol	Parameter	Conditions	Min	Typ	Max	Unit
V <sub>ESD</sub>	electrostatic discharge voltage	HBM: ANSI/ESDA/JEDEC JS-001 class 2 [1]	-2000	-	2000	V
		CDM: ANSI/ESDA/JEDEC JS-002 class C3 [2]	-1000	-	1000	V

[1] HBM stress testing was performed in accordance with AEC-Q100-002.  
[2] CDM stress testing was performed in accordance with AEC-Q100-011.

9. Thermal information

Table 7. Thermal information

Thermal resistance according to JEDEC51-5 and -7.

Symbol	Parameter	SOT8062-1 (HTSSOP8)	Unit
R <sub>θJA</sub>	junction to ambient thermal resistance	62.3	°C/W
R <sub>θJC(top)</sub>	junction to case (top) thermal resistance	146.8	°C/W
R <sub>θJB</sub>	junction to board thermal resistance	20.0	°C/W
Ψ <sub>JT</sub>	junction to top char parameter	17.3	°C/W

10. Recommended operating conditions

Table 8. Recommended operating conditions

Symbol	Parameter	Conditions	Min	Typ	Max	Unit
V <sub>IN</sub>	input voltage		3	-	40	V
V <sub>OUT</sub>	output voltage		1.5	-	5.5	V
I <sub>OUT</sub>	output current	[1]	-	-	400	mA
V <sub>EN</sub>	enable voltage		0	-	40	V
C <sub>IN</sub>	input capacitance		-	2.2	-	µF
C <sub>OUT</sub>	output capacitance	[2]	1	-	220	µF
ESR	output capacitor ESR requirements	[3]	0.001	-	2	Ω
T <sub>amb</sub>	ambient temperature		-40	-	125	°C
T <sub>j</sub>	junction temperature		-40	-	150	°C

[1] Maximum output current when device is not thermal shutdown.  
[2] Effective output capacitance of 1 µF minimum required for stability.  
[3] Relevant ESR value at f = 10 kHz, if using a large ESR capacitor it is recommended to decouple this with a 100 nF ceramic capacitor to improve transient performance.

## 11. Electrical characteristics

**Table 9. Electrical characteristics**

At recommended operating conditions (unless otherwise noted): T<sub>j</sub> = -40 °C to 150 °C, C<sub>OUT</sub> = 1 µF, V<sub>IN</sub> = 13.5 V, I<sub>OUT</sub> = 100 µA, V<sub>EN</sub> = 2 V; voltages are referenced to GND (ground = 0 V).

Symbol	Parameter	Conditions	T <sub>amb</sub> = -40 °C to 125 °C			Unit
			Min	Typ[1]	Max	
Power supply						
V <sub>IN</sub>	input voltage range	fixed 5.2 V output; I <sub>OUT</sub> = 1 mA	5.5	-	40	V
V <sub>IN(UVLO)</sub>	under voltage lockout threshold	V <sub>IN</sub> rising	2.5	2.7	2.9	V
		V <sub>IN</sub> falling	2.3	2.5	2.65	V
		hysteresis	-	200	-	mV
I <sub>q</sub>	quiescent current	V <sub>IN</sub> = 5.5 V to 40 V; I <sub>OUT</sub> = 0 μA	-	5.3	10	μA
		V <sub>IN</sub> = 5.5 V to 40 V; I <sub>OUT</sub> = 100 μA	-	8	16	μA
I <sub>sd</sub>	shutdown current	V <sub>EN</sub> = 0 V	-	0.3	1.2	μA
Enable input (EN)						
V <sub>EN_L</sub>	logic input low level		-	-	0.7	V
V <sub>EN_H</sub>	logic input high level		2	-	-	V
I <sub>EN</sub>	EN pin current	V <sub>EN</sub> = V <sub>IN</sub> = 13.5 V	-	-	50	nA
Output						
V <sub>OUT</sub>	output accuracy	V <sub>IN</sub> = 6.5 V to 40 V; I <sub>OUT</sub> = 100 μA to 400 mA	5.05	5.20	5.35	V
ΔV <sub>OUT(ΔVIN)</sub>	line regulation	V <sub>IN</sub> = 6.5 V to 40 V; I <sub>OUT</sub> = 10 mA	-	-	10	mV
ΔV <sub>OUT(ΔIOUT)</sub>	load regulation	V <sub>IN</sub> = 13.5 V; I <sub>OUT</sub> = 100 μA to 400 mA	-	-	75	mV
V <sub>DO</sub>	dropout voltage	V <sub>IN</sub> = 5 V      I <sub>OUT</sub> = 200 mA	-	310	500	mV
		I <sub>OUT</sub> = 400 mA	-	630	1100	mV
I <sub>OUT</sub>	output current	V <sub>IN</sub> = 6.5 V	-	-	400	mA
I <sub>CL</sub>	output current limit	V <sub>IN</sub> = 6.5 V; output short to 90% x V <sub>OUT</sub>	400	540	700	mA
PSRR	power-supply ripple rejection	V <sub>IN</sub> = 13.5 V; V <sub>ripple</sub> = 0.5 V <sub>pp</sub> ; I <sub>OUT</sub> = 10 mA; C <sub>OUT</sub> = 2.2 μF; frequency = 100 Hz [2]	-	60	-	dB
Operating temperature range						
T <sub>sd</sub>	junction thermal shutdown temperature	rising junction temperature	-	175	-	°C
T <sub>hys</sub>	thermal shutdown hysteresis		-	20	-	°C

[1] All typical values are measured at T<sub>amb</sub> = 25 °C.

[2] Guaranteed by bench test, not fully tested in production.

12. Typical characteristics

At recommended operating conditions, voltages are referenced to GND (ground = 0 V); typical values are at 25 °C (unless otherwise noted).

$V_{IN} = 13.5\text{ V}$ ,  $V_{EN} \geq 2\text{ V}$ ,  $C_{OUT} = 1\text{ }\mu\text{F}$ ,  $V_{OUT} = 5.2\text{ V}$ ,  $T_{amb} = -40\text{ }^{\circ}\text{C}$  to  $125\text{ }^{\circ}\text{C}$ , unless otherwise specified.

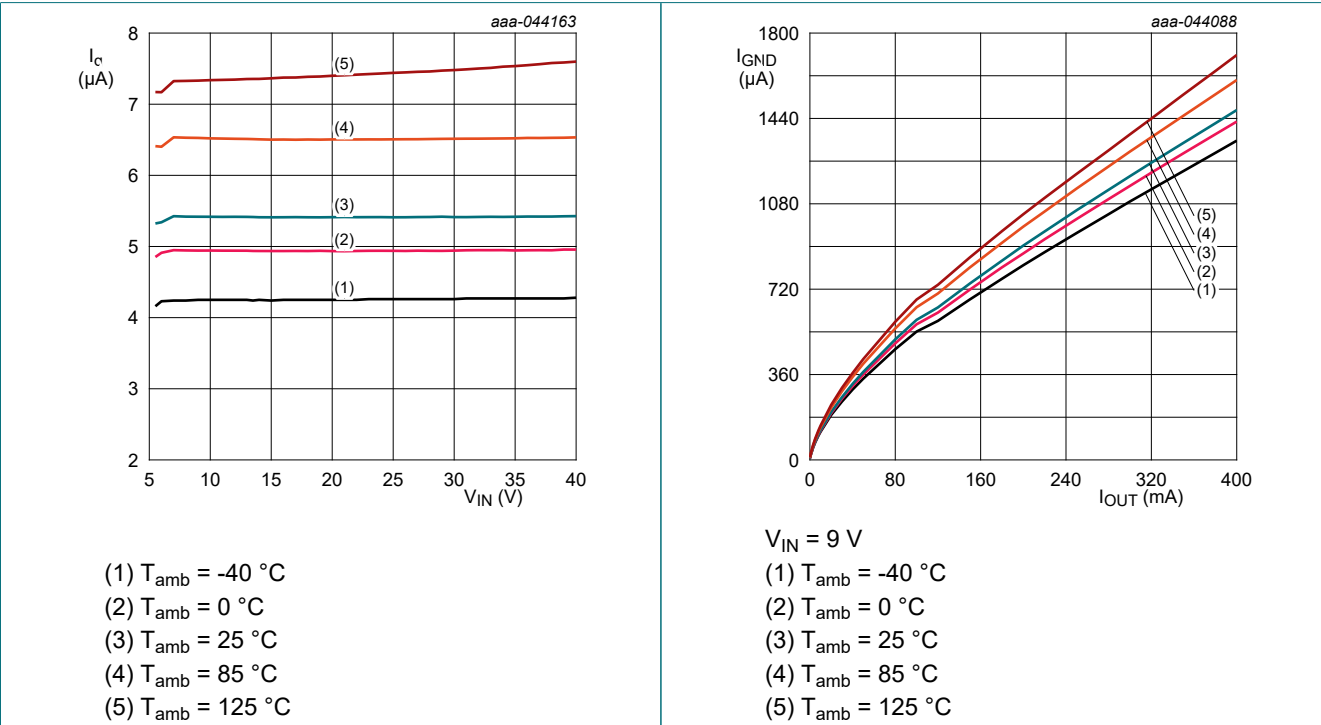


Fig. 2. Quiescent current vs input voltage

Fig. 3. Ground current vs output current

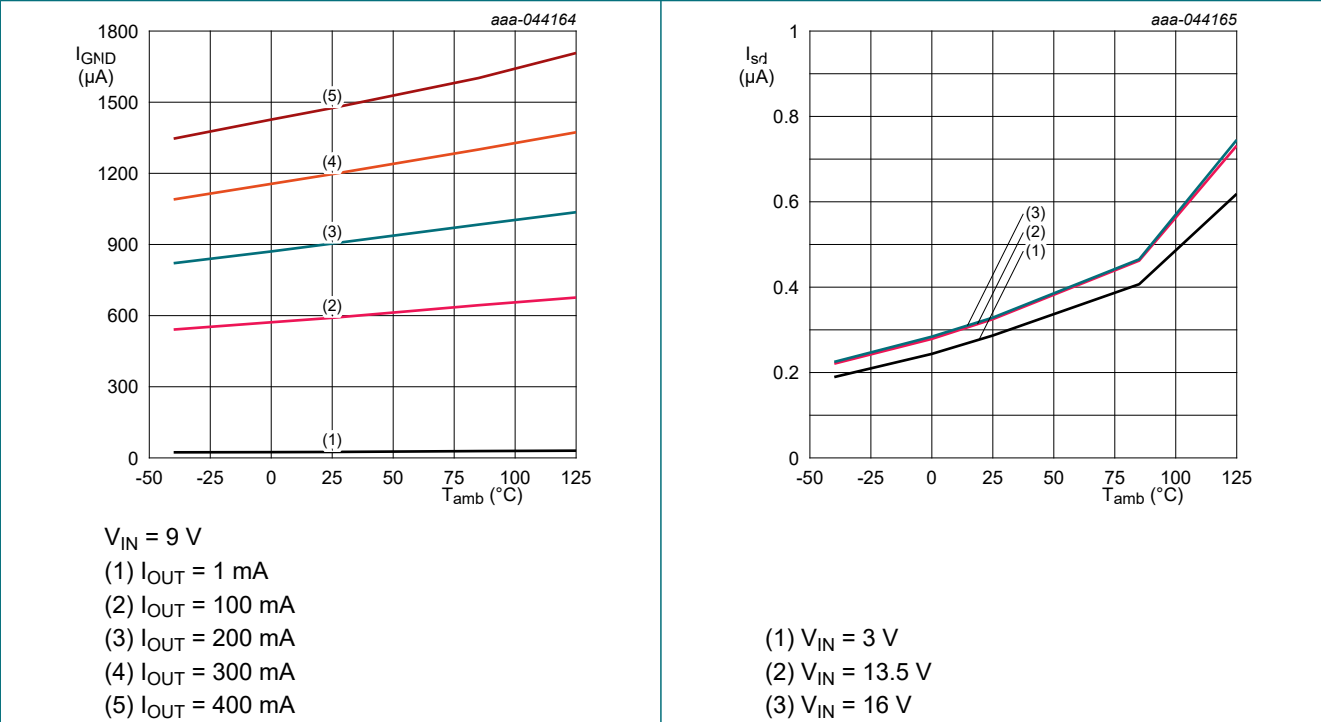


Fig. 4. Ground current vs ambient temperature

Fig. 5. Shutdown current vs ambient temperature

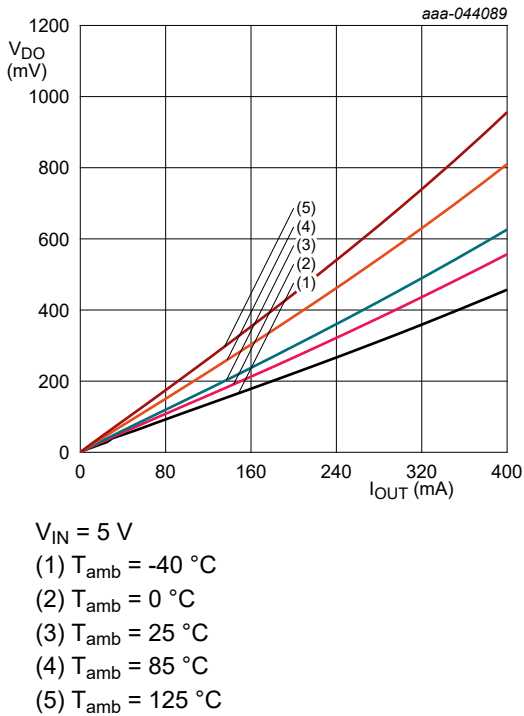


Fig. 6. Dropout voltage vs output current

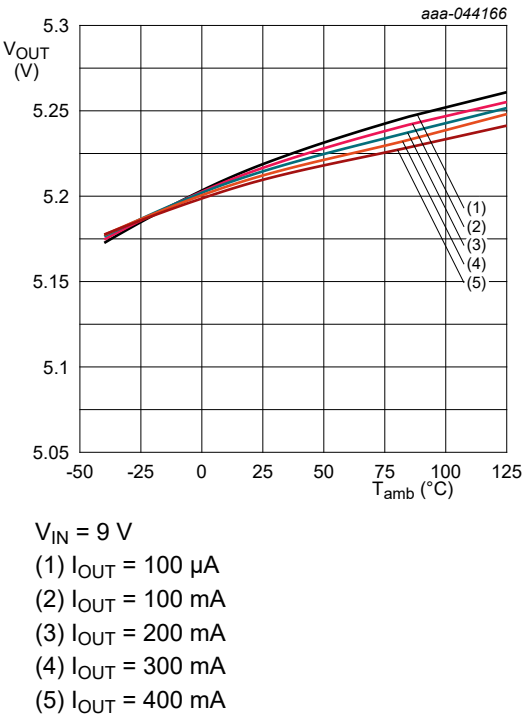


Fig. 7. Output accuracy vs ambient temperature

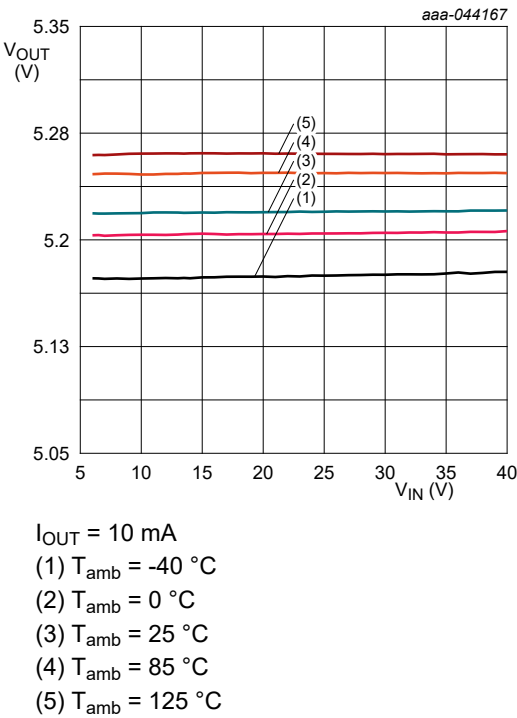


Fig. 8. Line regulation vs input voltage

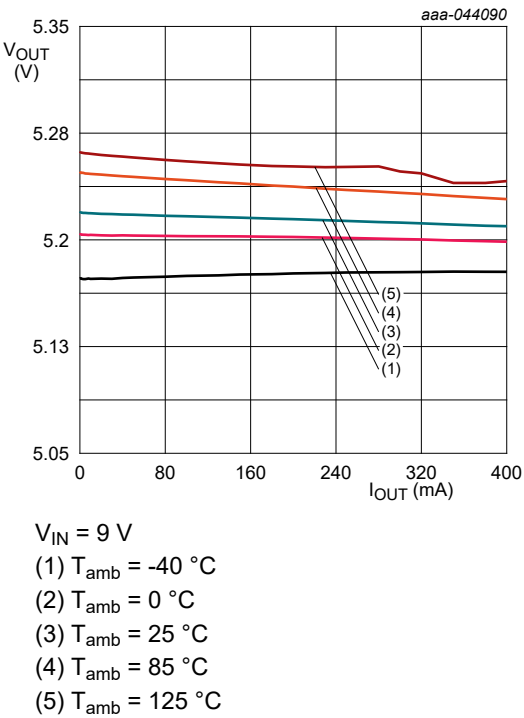
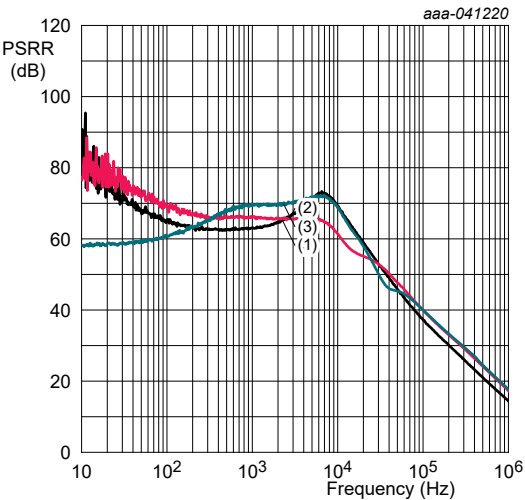
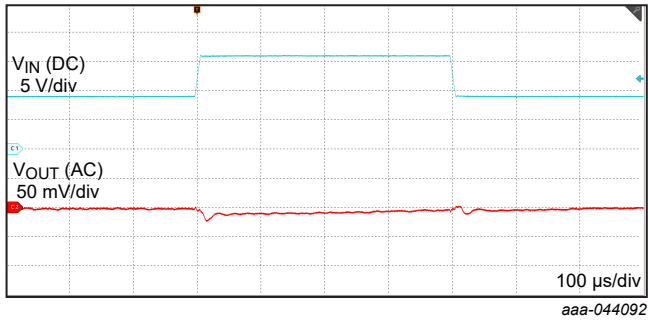


Fig. 9. Load regulation



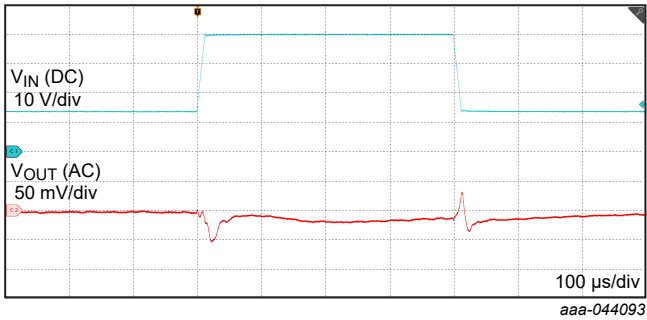
- (1)  $I_{OUT} = 1\text{ mA}$
- (2)  $I_{OUT} = 10\text{ mA}$
- (3)  $I_{OUT} = 100\text{ mA}$

Fig. 10. PSRR vs frequency



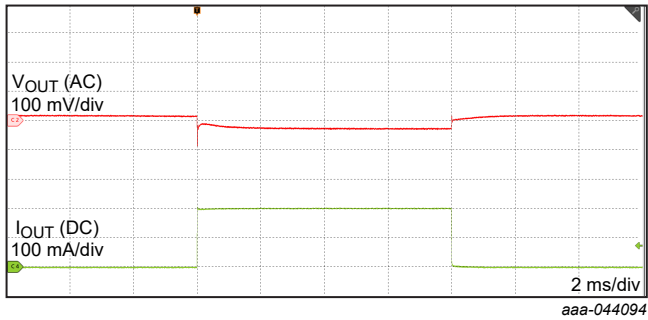
$V_{IN} = 9\text{ V to }16\text{ V}$ ; slew rate =  $1\text{ V}/\mu\text{s}$ ;  
 $V_{OUT} = 5.2\text{ V}$ ;  $I_{OUT} = 100\text{ mA}$ ;  $C_{OUT} = 10\text{ }\mu\text{F}$

Fig. 11. Line transient



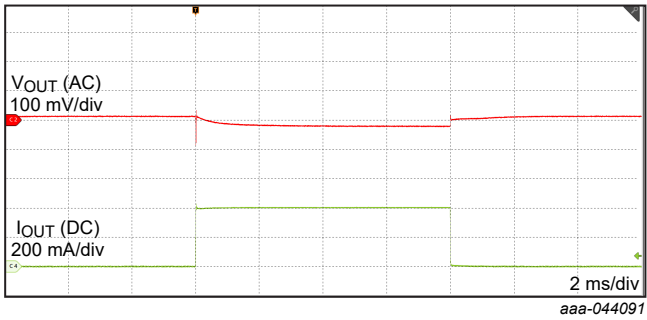
$V_{IN} = 13.5\text{ V to }40\text{ V}$ ; slew rate =  $2\text{ V}/\mu\text{s}$ ;  
 $V_{OUT} = 5.2\text{ V}$ ;  $I_{OUT} = 100\text{ mA}$ ;  $C_{OUT} = 10\text{ }\mu\text{F}$

Fig. 12. Line transient



$V_{IN} = 13.5\text{ V}$ ;  $I_{OUT} = 0\text{ mA to }150\text{ mA}$ ;  
slew rate =  $0.2\text{ A}/\mu\text{s}$ ;  $V_{OUT} = 5.2\text{ V}$ ;  $C_{OUT} = 10\text{ }\mu\text{F}$

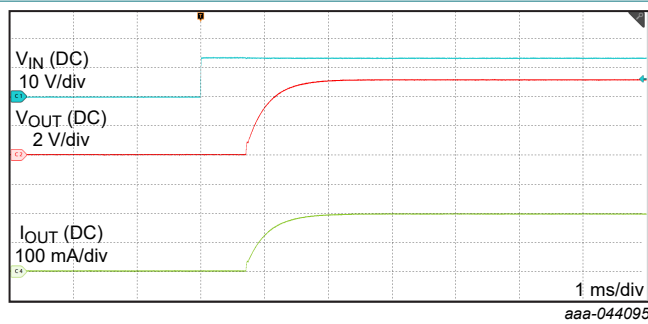
Fig. 13. Load transient



$V_{IN} = 13.5\text{ V}$ ;  $I_{OUT} = 0\text{ mA to }400\text{ mA}$ ;  
slew rate =  $0.2\text{ A}/\mu\text{s}$ ;  $V_{OUT} = 5.2\text{ V}$ ;  $C_{OUT} = 10\text{ }\mu\text{F}$

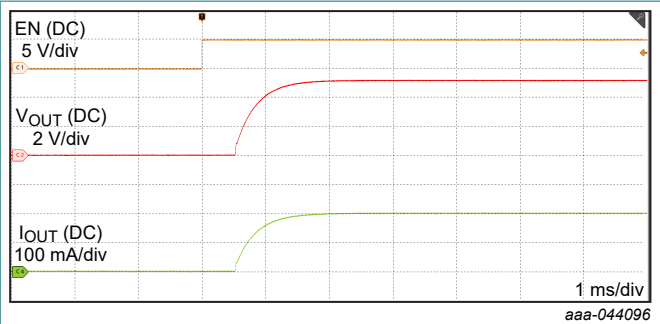
Fig. 14. Load transient





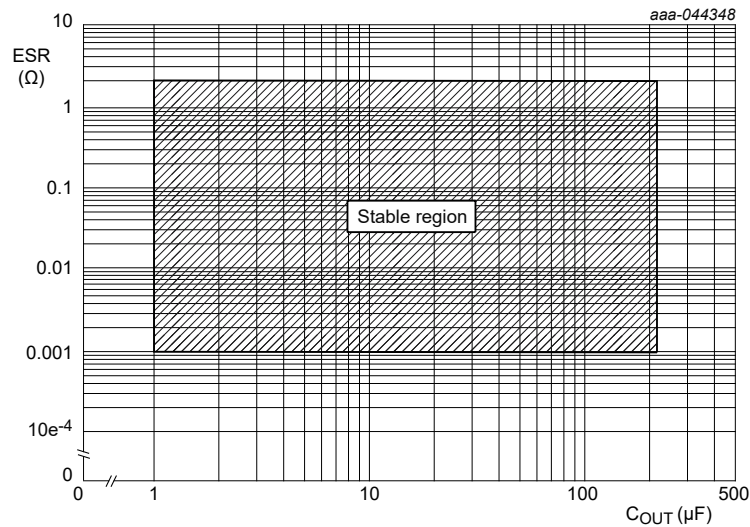
$V_{EN} = 5 \text{ V}$ ;  $I_{OUT} = 150 \text{ mA}$ ;  
 $V_{OUT} = 5.2 \text{ V}$ ;  $C_{OUT} = 10 \text{ µF}$ ;  $V_{IN}$  from 0 V to 13.5 V

Fig. 15. Start up by VIN



$V_{IN} = 13.5 \text{ V}$ ;  $I_{OUT} = 150 \text{ mA}$ ;  
 $V_{OUT} = 5.2 \text{ V}$ ;  $C_{OUT} = 10 \text{ µF}$ ;  $V_{EN}$  from 0 V to 5 V

Fig. 16. Start up by EN



ESR from 0.001 Ω to 2 Ω; output cap of 1 µF to 220 µF

Fig. 17. Stability, ESR vs C<sub>OUT</sub>

## 13. Detailed description

### 13.1. Overview

The NEX90240-Q100 is a low-dropout linear regulator (LDO) designed for direct connection to the battery in automotive applications.

It has an input voltage range up to 40 V (with a maximum of 45 V), enabling it to withstand transients, such as load dumps, commonly encountered in automotive systems.

With a typical quiescent current of only 5.3 µA at light loads and a shutdown current of 300 nA when disabled, this device is ideal for powering always-on components and CAN-wake systems.

Additionally, it features thermal shutdown and short-circuit protection to safeguard against damage from overtemperature and over-current conditions.

## 13.2. Function block diagram

The NEX90240-Q100 function block diagram is shown in [Fig. 18](#).

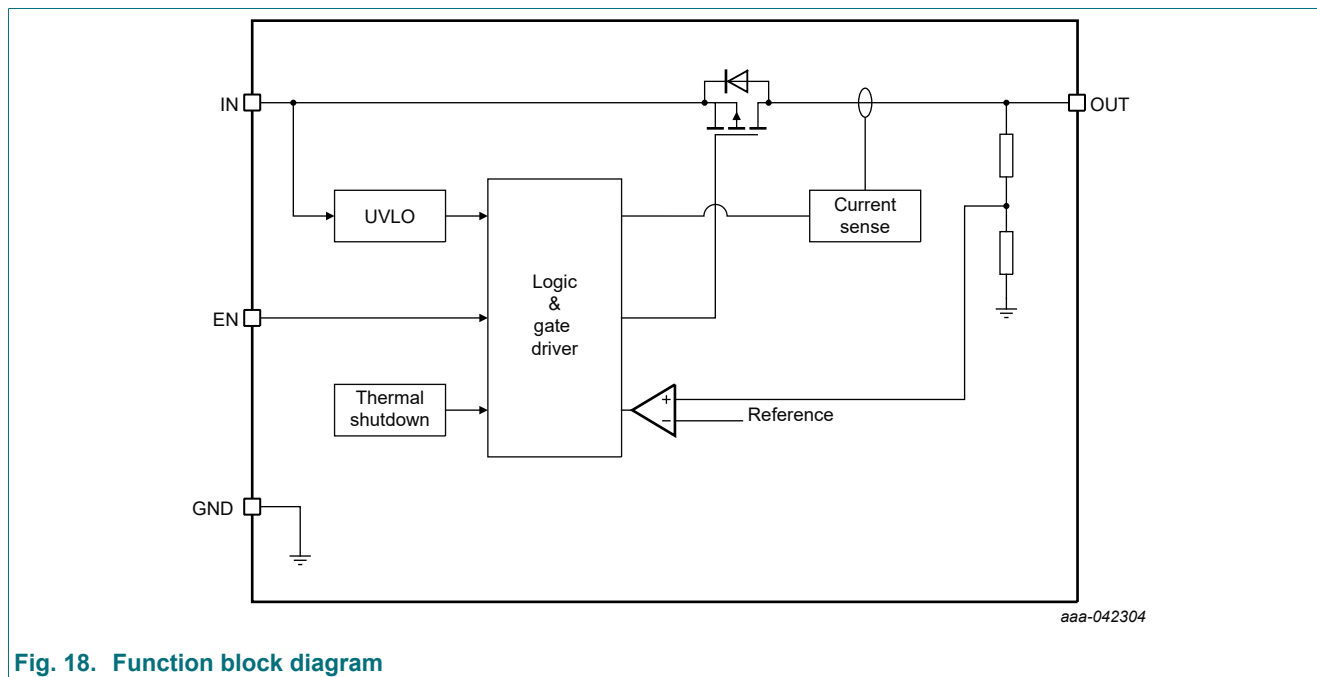


Fig. 18. Function block diagram

## 13.3. Feature description

### 13.3.1. Device Enable (EN)

The enable pin is a high-voltage-tolerant pin. A high input on EN activates the device and turns on the regulator. Connect this pin to an external microcontroller or a digital circuit to enable and disable the device or connect to the IN pin for self-bias applications. Always ensure that  $V_{EN} \leq V_{IN}$ .

### 13.3.2. Undervoltage lockout (UVLO)

An undervoltage lockout (UVLO) circuit prevents the device from operating when the input voltage falls below the typical falling threshold,  $V_{IN(UVLO)}$ . To avoid turning off the device during startup, the UVLO incorporates hysteresis, as specified in [Table 9](#).

If the input voltage experiences a negative transient that drops below the UVLO threshold and then recovers, the regulator will shut down and restart following the normal power-up sequence once the input voltage exceeds the required level.

### 13.3.3. Current limit operation

The device features an internal current limit circuit that protects the regulator during transient high-load current faults or shorting events.

When the device is in current limit mode, the output voltage is not regulated. During a current limit event, the device heats up due to increased power dissipation. When the device reaches the current limit ( $I_{CL}$ ), the pass transistor dissipates power according to the formula  $[(V_{IN} - V_{OUT}) \times I_{CL}]$ .

If thermal shutdown is triggered, the device will turn off. Once it cools down, the internal thermal shutdown circuit will turn the device back on. If the output current fault condition persists, the device will cycle between current limit and thermal shutdown.

13.3.4. Thermal shutdown

The NEX90240-Q100 integrates an internal temperature sensor to monitor the junction temperature ( $T_j$ ). If  $T_j$  exceeds the thermal shutdown temperature ( $T_{sd}$ ) of 175 °C, the device ceases operation. The device will resume functioning when  $T_j$  drops below the hysteresis threshold of approximately 20 °C.

Thermal shutdown may be triggered during startup due to large inrush currents charging substantial output capacitance, or under heavy loads where high ( $V_{IN} - V_{OUT}$ ) regulations result in significant power dissipation across the die. Proper heat sinking should be considered in these high power dissipation scenarios.

14. Device functional modes

14.1. Device functional mode comparison

Table 10 shows the conditions that lead to the different modes of operation. See Table 9 table for recommended operating conditions.

Table 10. Device functional mode comparison

Operating mode	Parameter			
	$V_{IN}$	$V_{EN}$	$I_{OUT}$	$T_j$
Normal operation	$V_{IN} \geq V_{OUT(nom)} + V_{DO}$ and $V_{IN} \geq V_{IN(min)}$	$V_{EN} > V_{IH}$	$I_{OUT} \leq I_{OUT(max)}$	$T_j < T_{sd}$
Dropout operation	$V_{IN(min)} \leq V_{IN} < V_{OUT(nom)} + V_{DO}$	$V_{EN} > V_{IH}$	$I_{OUT} \leq I_{OUT(max)}$	$T_j < T_{sd}$
Disabled mode	$V_{IN} < V_{ULVO}$	$V_{EN} < V_{IL}$	Not applicable	$T_j > T_{sd}$

14.2. Normal operation

The device works at nominal voltage when all the following conditions are met:

- The output current is less than the current limit
- The device's junction temperature is less than thermal shutdown temperature
- The enable pin voltage has exceeded the enable rising threshold voltage and has not decreased below the enable falling threshold

14.3. Dropout operation

The device operates in dropout mode when the input voltage falls below the target output voltage plus the dropout voltage, provided all other conditions for normal operation are met. In this mode, the output voltage tracks the input voltage.

However, the transient performance significantly degrades because the pass element operates in the ohmic or triode region, acting like a switch. Line or load transients in dropout can cause substantial output voltage deviations.

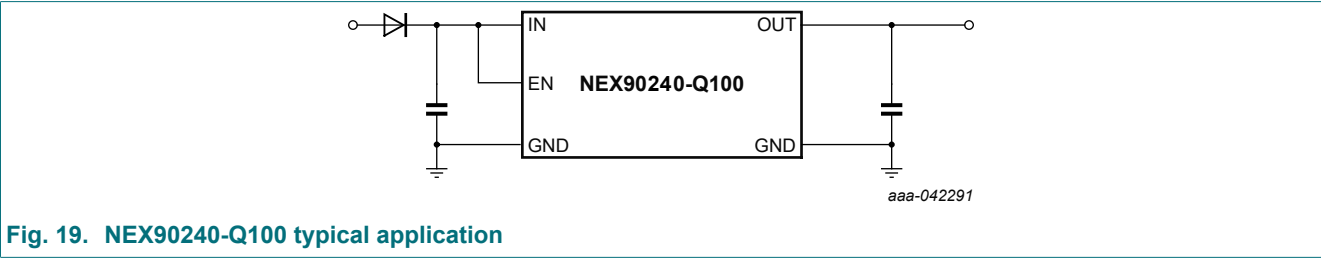
When the input voltage returns to a level equal to or greater than the nominal output voltage plus the dropout voltage [ $V_{OUT(nom)} + V_{DO}$ ], the output voltage may briefly overshoot while the device pulls the pass element back into the linear region.

15. Application implementation

15.1. Application information

The following section is a reference to simplify the system design with the NEX90240-Q100 typical application for external components calculation and selection.

15.2. Typical application



Design requirements

A typical application is applied in automotives and power supplies for MCU or CAN/LIN, which normally requires 5 V output. The design parameters are listed in [Table 11](#).

Table 11. Design parameters

Parameters	Values
Input voltage	6.5 V to 40 V
Output voltage	5.2 V
Output current	400 mA max
Input capacitance	10 µF
Output capacitance	10 µF

15.2.1. Detailed design procedure

Input capacitor

The device requires an input decoupling capacitor, the value of which depends on the application. The typical recommended value for the decoupling capacitor is 2.2 µF. The voltage rating must be greater than the maximum input voltage.

Output capacitor

To ensure the stability of NEX90240-Q100, the device requires an output capacitor with a value of 1 µF to 220 µF from OUT to GND and ESR range between 0.001 Ω and 2 Ω. It is recommended to use a ceramic capacitor with low ESR to improve the load transient response and ripple performance.

## 16. Layout

### 16.1. Layout guidelines

For optimal overall performance, the following guidelines are recommended for an LDO layout:

- Place all circuit components on the same side of the circuit board and as near as practical to the respective LDO pin connections.
- Ensure ground return connections for the input and output capacitors, as well as the LDO ground pin, are as close to each other as possible, connected by a wide copper surface on the component side.
- Avoid using vias and long traces to connect the input and output capacitors, as this can negatively impact system performance.
- In most applications, a ground plane is essential to meet thermal requirements.

A ground reference plane should be either embedded in the PCB or located on the bottom side opposite the components. This reference plane helps ensure output voltage accuracy, shields against noise, and acts as a thermal plane to dissipate heat from the LDO device when connected to the thermal pad.

### 16.2. Layout examples

The figure below shows a layout example for NEX90240-Q100 (HTSSOP8).

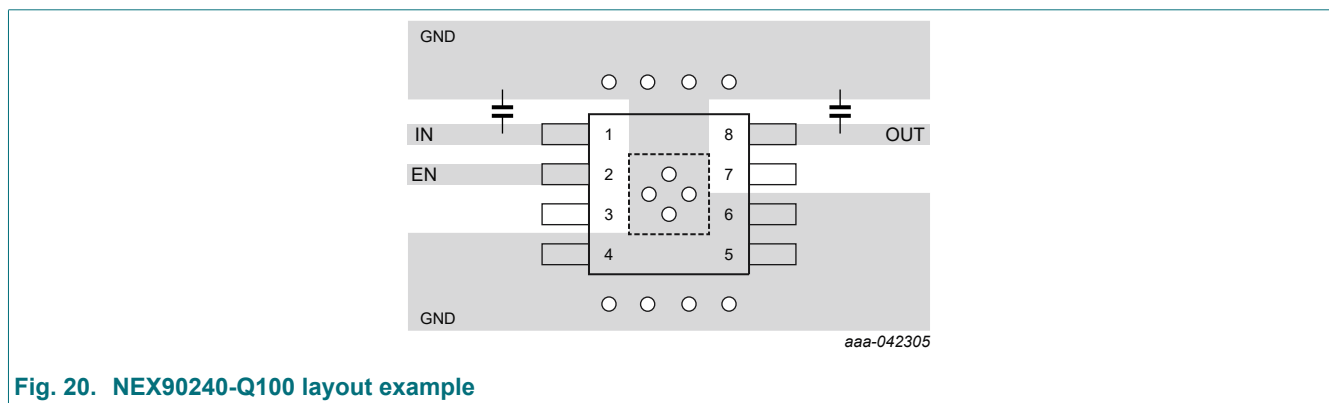


Fig. 20. NEX90240-Q100 layout example

17. Package outline

Plastic, thermal enhanced thin shrink small outline package; 8 leads,  
0.65 mm pitch, 3 mm × 3 mm × 1.1 mm body

SOT8062-1

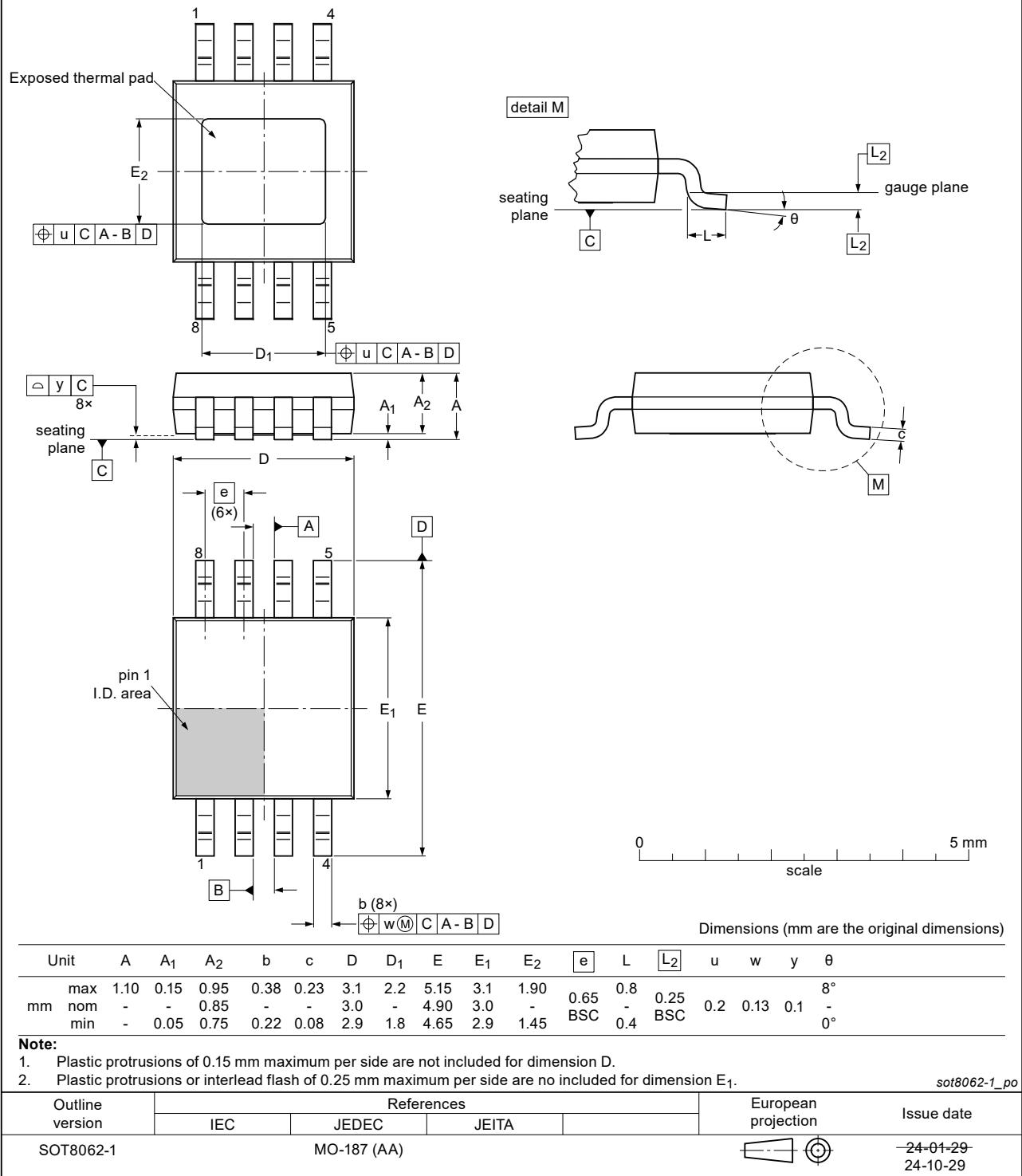


Fig. 21. Package outline SOT8062-1 (HTSSOP8)

18. Abbreviations

Table 12. Abbreviations

Acronym	Description
AEC	Automotive Electronics Council
ANSI	American National Standards Institute
BCM	Body Control Modules
CAN	Controller Area Network
CDM	Charged Device Model
ESR	Equivalent Series Resistance
ESD	ElectroStatic Discharge
ESDA	ElectroStatic Discharge Association
EV	Electric Vehicle
JEDEC	Joint Electron Device Engineering Council
HBM	Human Body Model
HEV	Hybrid Electric Vehicle
LIN	Local Interconnect Network
LDO	Low-DropOut
MCU	Microcontroller Unit
UVLO	UnderVoltage LockOut

19. Revision history

Table 13. Revision history

Document ID	Release date	Data sheet status	Change notice	Supersedes
NEX90240_Q100 v. 1	20250908	Product data sheet	-	-

## 20. Legal information

### Data sheet status

Document status [1][2]	Product status [3]	Definition
Objective [short] data sheet	Development	This document contains data from the objective specification for product development.
Preliminary [short] data sheet	Qualification	This document contains data from the preliminary specification.
Product [short] data sheet	Production	This document contains the product specification.

- [1] Please consult the most recently issued document before initiating or completing a design.
- [2] The term 'short data sheet' is explained in section "Definitions".
- [3] The product status of device(s) described in this document may have changed since this document was published and may differ in case of multiple devices. The latest product status information is available on the internet at <https://www.nexperia.com>.

### Definitions

**Draft** — The document is a draft version only. The content is still under internal review and subject to formal approval, which may result in modifications or additions. Nexperia does not give any representations or warranties as to the accuracy or completeness of information included herein and shall have no liability for the consequences of use of such information.

**Short data sheet** — A short data sheet is an extract from a full data sheet with the same product type number(s) and title. A short data sheet is intended for quick reference only and should not be relied upon to contain detailed and full information. For detailed and full information see the relevant full data sheet, which is available on request via the local Nexperia sales office. In case of any inconsistency or conflict with the short data sheet, the full data sheet shall prevail.

**Product specification** — The information and data provided in a Product data sheet shall define the specification of the product as agreed between Nexperia and its customer, unless Nexperia and customer have explicitly agreed otherwise in writing. In no event however, shall an agreement be valid in which the Nexperia product is deemed to offer functions and qualities beyond those described in the Product data sheet.

### Disclaimers

**Limited warranty and liability** — Information in this document is believed to be accurate and reliable. However, Nexperia does not give any representations or warranties, expressed or implied, as to the accuracy or completeness of such information and shall have no liability for the consequences of use of such information. Nexperia takes no responsibility for the content in this document if provided by an information source outside of Nexperia.

In no event shall Nexperia be liable for any indirect, incidental, punitive, special or consequential damages (including - without limitation - lost profits, lost savings, business interruption, costs related to the removal or replacement of any products or rework charges) whether or not such damages are based on tort (including negligence), warranty, breach of contract or any other legal theory.

Notwithstanding any damages that customer might incur for any reason whatsoever, Nexperia's aggregate and cumulative liability towards customer for the products described herein shall be limited in accordance with the Terms and conditions of commercial sale of Nexperia.

**Right to make changes** — Nexperia reserves the right to make changes to information published in this document, including without limitation specifications and product descriptions, at any time and without notice. This document supersedes and replaces all information supplied prior to the publication hereof.

**Suitability for use in automotive applications** — This Nexperia product has been qualified for use in automotive applications. Unless otherwise agreed in writing, the product is not designed, authorized or warranted to be suitable for use in life support, life-critical or safety-critical systems or

equipment, nor in applications where failure or malfunction of an Nexperia product can reasonably be expected to result in personal injury, death or severe property or environmental damage. Nexperia and its suppliers accept no liability for inclusion and/or use of Nexperia products in such equipment or applications and therefore such inclusion and/or use is at the customer's own risk.

**Quick reference data** — The Quick reference data is an extract of the product data given in the Limiting values and Characteristics sections of this document, and as such is not complete, exhaustive or legally binding.

**Applications** — Applications that are described herein for any of these products are for illustrative purposes only. Nexperia makes no representation or warranty that such applications will be suitable for the specified use without further testing or modification.

Customers are responsible for the design and operation of their applications and products using Nexperia products, and Nexperia accepts no liability for any assistance with applications or customer product design. It is customer's sole responsibility to determine whether the Nexperia product is suitable and fit for the customer's applications and products planned, as well as for the planned application and use of customer's third party customer(s). Customers should provide appropriate design and operating safeguards to minimize the risks associated with their applications and products.

Nexperia does not accept any liability related to any default, damage, costs or problem which is based on any weakness or default in the customer's applications or products, or the application or use by customer's third party customer(s). Customer is responsible for doing all necessary testing for the customer's applications and products using Nexperia products in order to avoid a default of the applications and the products or of the application or use by customer's third party customer(s). Nexperia does not accept any liability in this respect.

**Limiting values** — Stress above one or more limiting values (as defined in the Absolute Maximum Ratings System of IEC 60134) will cause permanent damage to the device. Limiting values are stress ratings only and (proper) operation of the device at these or any other conditions above those given in the Recommended operating conditions section (if present) or the Characteristics sections of this document is not warranted. Constant or repeated exposure to limiting values will permanently and irreversibly affect the quality and reliability of the device.

**Terms and conditions of commercial sale** — Nexperia products are sold subject to the general terms and conditions of commercial sale, as published at <http://www.nexperia.com/profile/terms>, unless otherwise agreed in a valid written individual agreement. In case an individual agreement is concluded only the terms and conditions of the respective agreement shall apply. Nexperia hereby expressly objects to applying the customer's general terms and conditions with regard to the purchase of Nexperia products by customer.

**No offer to sell or license** — Nothing in this document may be interpreted or construed as an offer to sell products that is open for acceptance or the grant, conveyance or implication of any license under any copyrights, patents or other industrial or intellectual property rights.

**Export control** — This document as well as the item(s) described herein may be subject to export control regulations. Export might require a prior authorization from competent authorities.

**Translations** — A non-English (translated) version of a document is for reference only. The English version shall prevail in case of any discrepancy between the translated and English versions.

### Trademarks

Notice: All referenced brands, product names, service names and trademarks are the property of their respective owners.



Contents

1. General description..... 1

2. Features and benefits..... 1

3. Applications..... 1

4. Ordering information.....2

5. Marking.....2

6. Pin configuration and description..... 2

6.1. Pin configuration.....2

6.2. Pin description..... 2

7. Limiting values..... 3

8. ESD ratings..... 3

9. Thermal information..... 3

10. Recommended operating conditions.....4

11. Electrical characteristics.....5

12. Typical characteristics..... 6

13. Detailed description..... 9

13.1. Overview.....9

13.2. Function block diagram..... 10

13.3. Feature description..... 10

13.3.1. Device Enable (EN)..... 10

13.3.2. Undervoltage lockout (UVLO)..... 10

13.3.3. Current limit operation..... 10

13.3.4. Thermal shutdown..... 11

14. Device functional modes..... 11

14.1. Device functional mode comparison..... 11

14.2. Normal operation..... 11

14.3. Dropout operation..... 11

15. Application implementation..... 12

15.1. Application information..... 12

15.2. Typical application..... 12

15.2.1. Detailed design procedure..... 12

16. Layout..... 13

16.1. Layout guidelines..... 13

16.2. Layout examples..... 13

17. Package outline..... 14

18. Abbreviations..... 15

19. Revision history..... 15

20. Legal information..... 16

© Nexperia B.V. 2025. All rights reserved

For more information, please visit: <http://www.nexperia.com>

For sales office addresses, please send an email to: [salesaddresses@nexperia.com](mailto:salesaddresses@nexperia.com)

Date of release: 8 September 2025