



# NEX83188

## CCM/CrM/DCM multi-mode boost Power Factor Correction controller

Rev. 1.1 — 16 September 2025

Product data sheet

## 1. General description

NEX83188 is a Power Factor Correction (PFC) controller. It supports multi-mode (CCM/CrM/DCM) operations.

The device uses average current mode based VOT-control to achieve high power factor and low-current total harmonic distortion (THD) over a wide line voltage. The device features a very low supply current in burst mode. This allows the device to achieve low standby power loss.

The switching frequency near the line voltage zero cross region is reduced by the control method. It improves efficiency.

NEX83188 features overvoltage protection (OVP), cycle-by-cycle (CBC) current limit, open-loop protection (OLP), overtemperature protection (OTP), brown-in and brown-out.

NEX83188 is available in SO8 package.

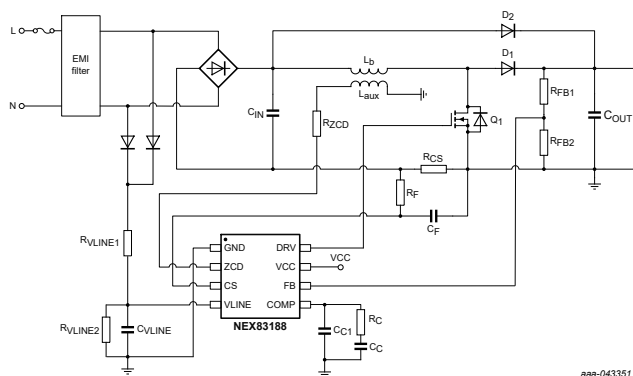


Fig. 1. Typical application

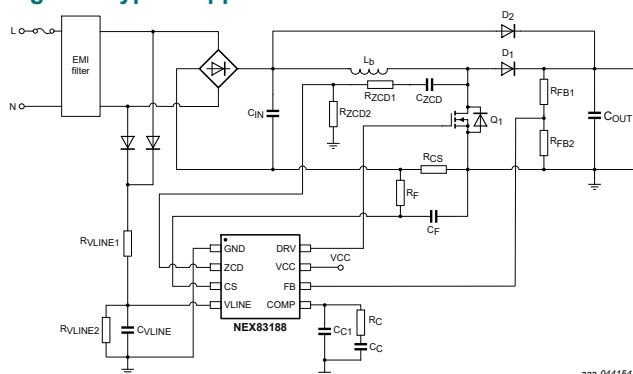


Fig. 2. Typical application without auxiliary winding

## 2. Features and benefits

- Adaptive variable on time control
- Multi-mode (CCM/CrM/DCM) operations
- Supports E-mode GaN HEMT direct drive
- Line voltage feed forward
- Integrated THD enhancement circuit
- Integrated dynamic enhancement circuit
- Maximum switching frequency clamp to reduce the losses
- Valley/zero-voltage switching for minimum switching losses
- Rich protections:
  - VCC UVLO/OVP
  - Output OVP
  - Cycle-by-cycle (CBC) current limit
  - Open-loop protection (OLP)
  - Overtemperature protection (OTP)
  - Brown-in/brown-out
- Available in SO8 package

## 3. Applications

- Monitors or LCD televisions
- Personal computer power adapters
- USB Power Delivery quick chargers
- All off-line appliances requiring power factor correction

Table 1. Device information

Part number	Package	Body size
NEX83188	SO8	4.9 mm x 3.9 mm x 1.75 mm

## 4. Ordering information

Table 2. Ordering information

Type number	Temperature range (T <sub>j</sub> )	Name	Description	Version
<a href="#">NEX83188D</a>	-40 °C to 150 °C	SO8	plastic, small outline package; 8 leads; 1.27 mm pitch; 4.9 mm x 3.9 mm x 1.75 mm body	<a href="#">SOT96-2</a>

## 5. Marking

Table 3. Marking code

Type number	Marking code
NEX83188D	N83188

## 6. Pin configuration and description

### 6.1. Pin configuration

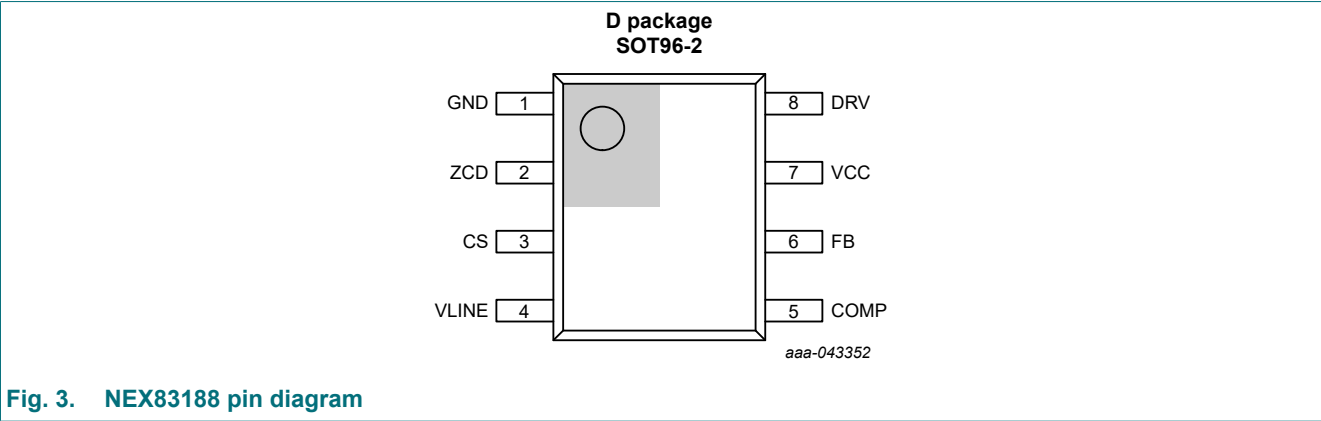


Fig. 3. NEX83188 pin diagram

### 6.2. Pin description

Symbol	Pin	I/O	Description
GND	1	PWR	GND supply pin
ZCD	2	IN	input from auxiliary winding for demagnetization timing and valley detection for PFC
CS	3	IN	current sense input for PFC
VLINE	4	IN	sense input for line voltage
COMP	5	OUT	loop compensation pin; the compensation network is connected between this pin and GND
FB	6	IN	output voltage sense pin
VCC	7	PWR	supply voltage
DRV	8	OUT	gate driver output pin

7. Limiting values

Table 4. Limiting values

In accordance with the Absolute Maximum Rating System (IEC 60134). Voltages are referenced to GND (ground = 0 V).[1]

Symbol	Parameter	Conditions	Min	Max	Unit
VCC	supply voltage		-0.3	40	V
VZCD	pin voltage	current limited	-0.3	6.5	V
VCS		current limited	-1	5.5	V
VLINE		current limited	-0.3	5.5	V
VCOMP		current limited	-0.3	5.5	V
VFB		current limited	-0.3	5.5	V
VDIV		current limited	-0.3	13	V
Tj	junction temperature		-40	150	°C
Tstg	storage temperature		-65	150	°C

[1] Stresses beyond those conditions under absolute maximum ratings may cause permanent damage to the device. These are stress ratings only and functional operation of the device at these or any other conditions beyond those indicated under recommended operating conditions is not implied. Exposure to absolute-maximum-rated conditions for extended periods may affect device reliability.

8. ESD ratings

Table 5. ESD ratings

Symbol	Parameter	Conditions	Min	Typ	Max	Unit
VESD	electrostatic discharge voltage	HBM: ANSI/ESDA/JEDEC JS-001 class 2	-2000	-	2000	V
		CDM: ANSI/ESDA/JEDEC JS-002 class C2a	-500	-	500	V

9. Recommended operating conditions

Table 6. Recommended operating conditions

Symbol	Parameter	Conditions	Min	Max	Unit
VCC	supply voltage		14	33	V
VLINE	sensed line voltage		0	5	V
Tj	junction temperature		-40	125	°C

10. Thermal characteristics

Table 7. Thermal characteristics

Symbol	Parameter	SOT96-2 (SO8)	Unit
ROJA	junction-to-ambient thermal resistance	160	°C/W
ROJC(top)	junction-to-case (top) thermal resistance	85	°C/W
ROJB	junction-to-board thermal resistance	125	°C/W
ΦJT	junction to top char parameter	39	°C/W

## 11. Electrical characteristics

**Table 8. Electrical characteristics**

Where  $V_{CC} = 18\text{ V}$ ; typical values are measured  $T_j = 25\text{ }^{\circ}\text{C}$  (unless otherwise noted).

Symbol	Parameter	Conditions	T <sub>j</sub> = -40 °C to 125 °C			Unit
			Min	Typ	Max	
Supply (VCC pin)						
V <sub>VCC_ON</sub>	VCC on threshold voltage	VCC rising	11.4	12	12.8	V
V <sub>VCC_OFF</sub>	VCC off threshold voltage	VCC falling	8.5	9	9.5	V
V <sub>VCC_OVP_H</sub>	over voltage protection voltage high threshold	VCC rising	33.5	36	39.3	V
V <sub>VCC_OVP_L</sub>	over voltage protection voltage low threshold	VCC falling	31	34	37.5	V
I <sub>VCC_STARTUP</sub>	operating current during normal operation	VCC = 9.5 V during start-up	-	-	120	µA
I <sub>VCC_Q</sub>	operating quiescent current	DRV pin is floating, or device is non-switching	-	0.45	0.63	mA
I <sub>VCC_NOM</sub>	VCC normal operating current	f <sub>SW</sub> = 89 kHz; C <sub>Load</sub> = 1 nF on DRV pin	-	1.5	3.8	mA
		f <sub>SW</sub> = 135 kHz; C <sub>Load</sub> = 1 nF on DRV pin	-	4.6	6.2	mA
		f <sub>SW</sub> = 260 kHz; C <sub>Load</sub> = 1 nF on DRV pin	-	5	7.5	mA
Gate driver output (DRV pin)						
I <sub>DRV_SOURCE</sub>	DRV source current capability	V <sub>DRV</sub> = 2 V; V <sub>VCC</sub> ≥ 12 V	-	-0.6	-	A
I <sub>DRV_SINK</sub>	DRV sink current capability	V <sub>DRV</sub> = 10 V; V <sub>VCC</sub> ≥ 12 V	-	1.4	-	A
V <sub>DRV_MAX</sub>	maximum DRV voltage for MOSFET and D-mode GaN FET		11.1	12	13	V
	maximum DRV voltage for E-mode GaN FET		5.56	6.08	6.78	V
t <sub>R</sub>	voltage rising time for MOSFET	C <sub>Load</sub> = 1 nF; 10% to 90% of output signal	-	63	-	ns
	voltage rising time for GaN FET	C <sub>Load</sub> = 150 pF; 10% to 90% of output signal	-	56	-	ns
t <sub>F</sub>	voltage falling time for MOSFET	C <sub>Load</sub> = 1 nF; 10% to 90% of output signal	-	16.5	-	ns
	voltage falling time for GaN FET	C <sub>Load</sub> = 150 pF; 10% to 90% of output signal	-	2.3	-	ns
f <sub>sw_max</sub>	maximum switching frequency	low frequency version	60	65	77	kHz
		middle frequency version	115	135	155	kHz
		high frequency version	235	260	280	kHz
Zero-current detection (ZCD pin)						
V <sub>ZCD_DETA</sub>	zero-current detection arming threshold voltage on ZCD pin	MOSFET	1.9	2.1	2.3	V
		GaNFET	1.34	1.4	1.43	V

## CCM/CrM/DCM multi-mode boost Power Factor Correction controller

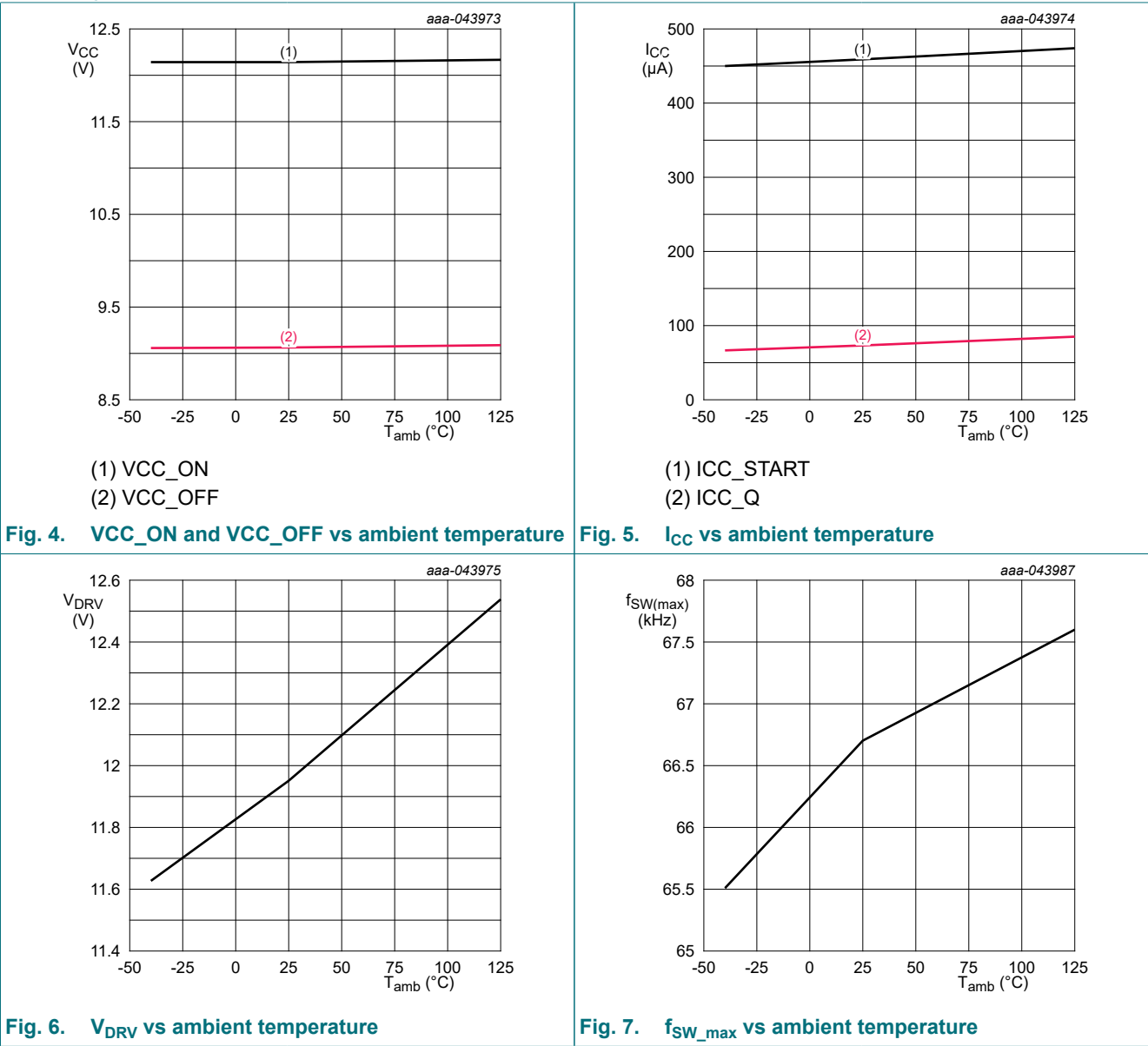
Symbol	Parameter	Conditions	T <sub>j</sub> = -40 °C to 125 °C			Unit
			Min	Typ	Max	
V <sub>ZCD_DETT</sub>	zero-current detection trigger threshold voltage on ZCD pin	MOSFET	1.44	1.4	1.76	V
		GaN FET	0.64	0.7	0.755	V
I <sub>ZCD_DET</sub>	protection current for ZCD		5	-	-	mA
t <sub>TIME_OUT</sub>	zero-current detection arming time-out time		-	30	-	μs
V <sub>ZCD_CLAMP_H</sub>	upper voltage clamp on ZCD pin		5.13	5.70	6.27	V
V <sub>ZCD_CLAMP_L</sub>	lower voltage clamp on ZCD pin	MOSFET	5.35	5.8	6.55	V
		GaN FET	0	0.32	0.55	V
t <sub>ZCD_DELAY</sub>	turn-on delay after ZCD detected	MOSFET	-	100	-	ns
		GaN FET	-	50	-	ns
Current sensing (CS pin)						
V <sub>CBC_OCP</sub>	inductor saturation protection threshold	enable CBC function	-0.55	-0.49	-0.44	V
Line voltage detection (VLINE pin)						
V <sub>LINE_BI</sub>	brown-in voltage threshold		0.698	0.750	0.802	V
V <sub>LINE_BO</sub>	brown-out voltage threshold		0.500	0.550	0.600	V
V <sub>BO(HYS)</sub>	brown-out comparator hysteresis		-	0.2	-	V
V <sub>LINE_TH_HL</sub>	high line detection threshold		1.57	1.65	1.73	V
V <sub>LINE_TH_LL</sub>	low line detection threshold		1.38	1.45	1.52	V
t <sub>LINE_DET_DB</sub>	the debounce time from high line to low line detection		-	50	-	ms
V <sub>LINE_AC_DROP</sub>	AC drop start detection threshold		0.20	0.25	0.30	V
	AC drop stop detection threshold		0.34	0.4	0.45	V
t <sub>AC_DROP</sub>	AC drop detection time		-	5	-	ms
t <sub>BO_DB</sub>	brown-out detection debounce time		-	50	-	ms
Regulation and compensation (COMP pin)						
V <sub>REF</sub>	output reference voltage		2.463	2.500	2.550	V
G <sub>m(low)</sub>	transconductance	V <sub>FB</sub> = 2.25 V to 2.35 V	100	400	750	μA/V
G <sub>m(normal)</sub>		V <sub>FB</sub> = 2.45 V to 2.55 V	132	160	185	μA/V
G <sub>m(high)</sub>		V <sub>FB</sub> = 2.6 V to 2.7 V	1050	1500	1870	μA/V
I <sub>COMP_source</sub>	source current on COMP pin	V <sub>FB</sub> < 2.1 V at normal operation	70	125	180	μA
		V <sub>FB</sub> = 2.45 V at normal operation	1	8	16	μA
		TM version during startup	18	30	42	μA
		MM version at high line during startup	36	57	78	μA
		MM version at low line during startup	12	24	42	μA

## CCM/CrM/DCM multi-mode boost Power Factor Correction controller

Symbol	Parameter	Conditions	T <sub>j</sub> = -40 °C to 125 °C			Unit
			Min	Typ	Max	
I <sub>COMP_sink</sub>	sink current on COMP pin	V <sub>FB</sub> = 2.55 V	-12.5	-8.6	-4.75	μA
		V <sub>FB</sub> = 2.65 V	-143	-98	-55	μA
V <sub>COMP_clamp</sub>	clamp voltage on COMP pin	upper clamp voltage; unidirectional clamp; operating mode; PFC on;	3.1	3.5	3.9	V
		lower clamp voltage; unidirectional clamp; operating mode; PFC on;	0.29	0.35	0.41	V
V <sub>BURST_TH</sub>	burst mode voltage threshold		0.470	0.500	0.535	V
<b>Output voltage sensing (FB pin)</b>						
V <sub>FB_OLP_H</sub>	open-loop protection threshold		0.42	0.50	0.58	V
V <sub>FB_OLP_L</sub>			0.34	0.40	0.47	V
t <sub>OLP_R</sub>	OLP recovery time		-	219	-	ms
t <sub>OLP_DB</sub>	open-loop protection debounce time		-	50	-	μs
t <sub>DELAY_START</sub>	start-up delay time	after open-loop protection removed	-	5	-	ms
V <sub>FB_OVP_H</sub>	overvoltage protection threshold		2.64	2.70	2.77	V
V <sub>FB_OVP_L</sub>			2.5	2.6	2.7	V
t <sub>OVP_DB</sub>	overvoltage protection debounce time		-	20	-	μs
I <sub>FB_FOLLOW</sub>	FB source current for following boost		18	20	22	μA
t <sub>transition</sub>	following boost transition time		-	30	-	ms
<b>Overtemperature protection (internal OTP)</b>						
T <sub>OTP</sub>	OTP trigger level		-	150	-	°C
T <sub>OTP_HYS</sub>	OTP hysteresis		-	50	-	°C

12. Typical characteristics

Table 9. Typical characteristics



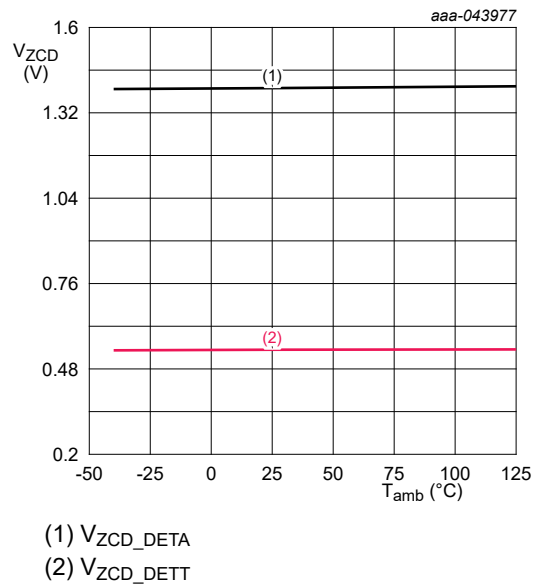


Fig. 8.  $V_{ZCD\_DETA}$  and  $V_{ZCD\_DETT}$  vs ambient temperature

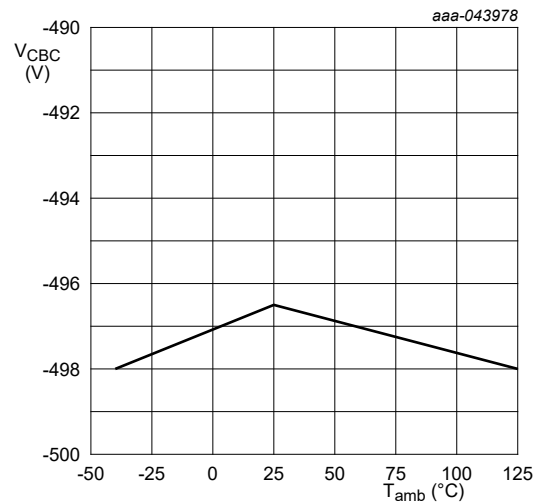


Fig. 9.  $V_{CBC\_OCP}$  vs ambient temperature

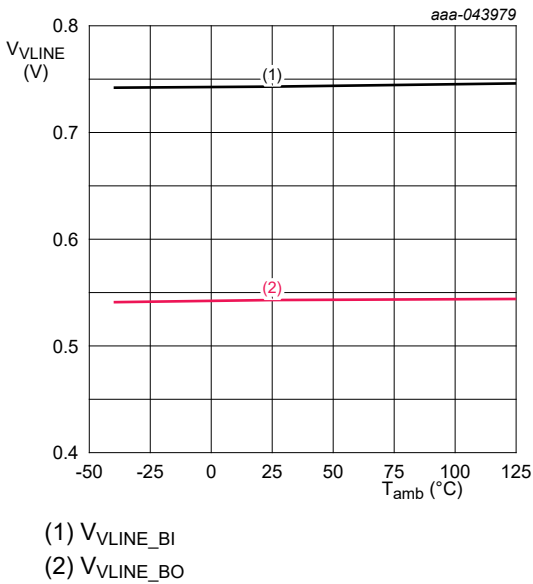


Fig. 10.  $V_{VLINE\_BI}$  and  $V_{VLINE\_BO}$  vs ambient temperature

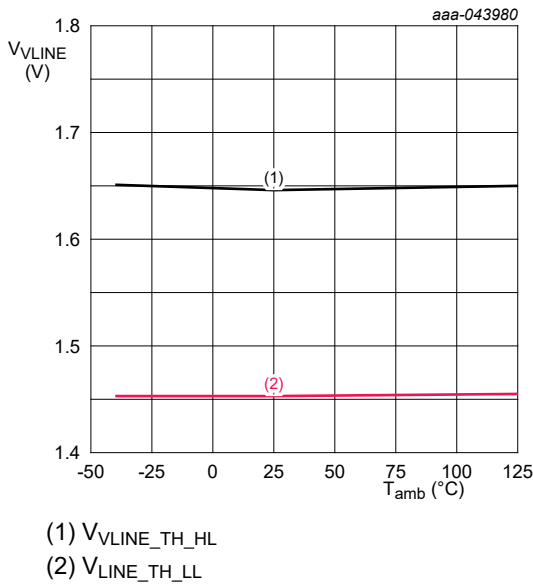


Fig. 11.  $V_{VLINE\_TH\_HL}$  and  $V_{VLINE\_TH\_LL}$  vs ambient temperature



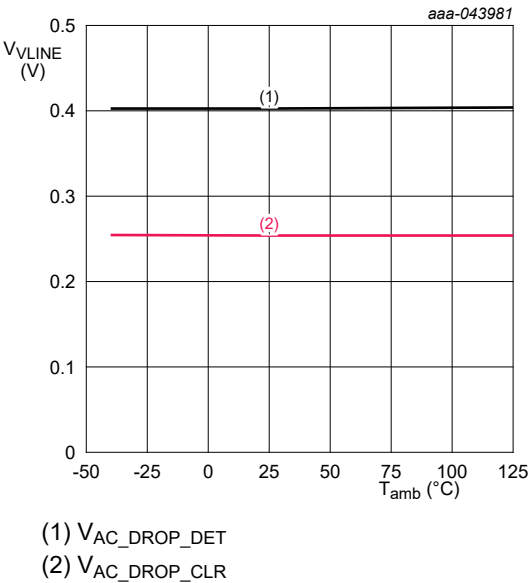


Fig. 12.  $V_{AC\_DROP\_DET}$  and  $V_{AC\_DROP\_CLR}$  vs ambient temperature

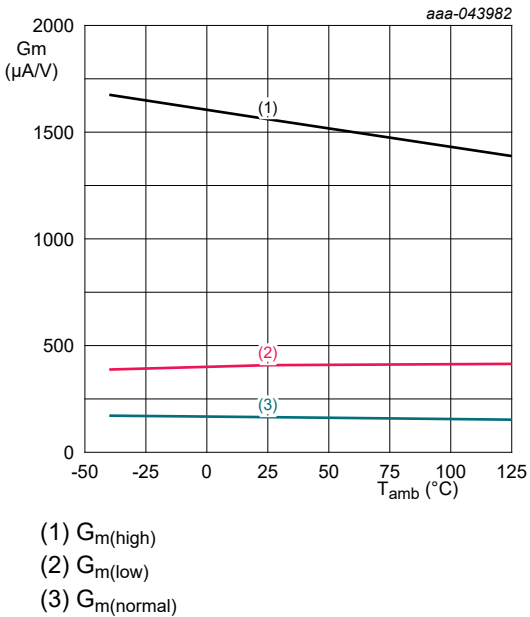


Fig. 13.  $G_m(\text{low})$ ,  $G_m(\text{normal})$ ,  $G_m(\text{high})$  vs ambient temperature

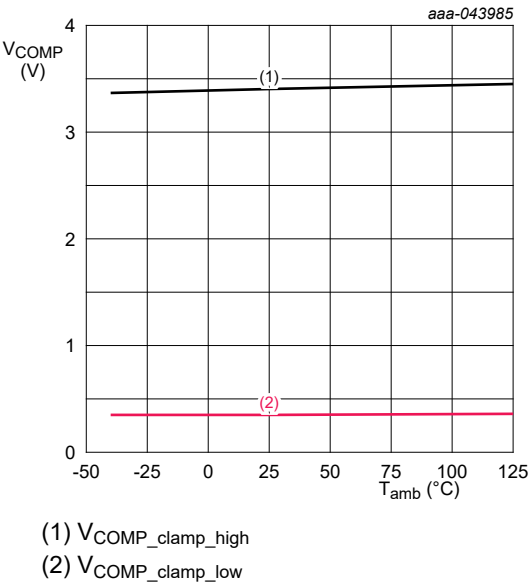


Fig. 14.  $V_{COMP\_clamp}$  vs ambient temperature

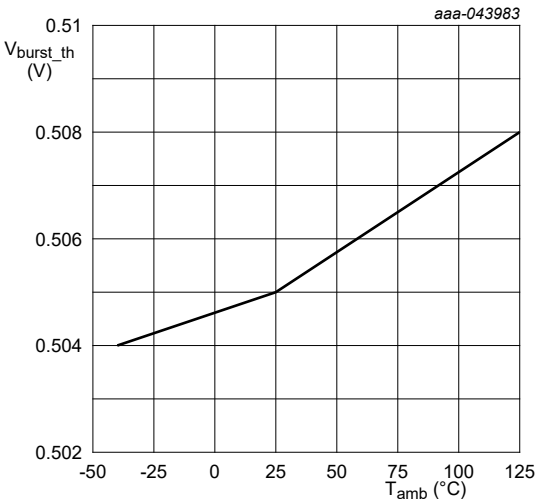


Fig. 15.  $V_{BURST\_TH}$  vs ambient temperature

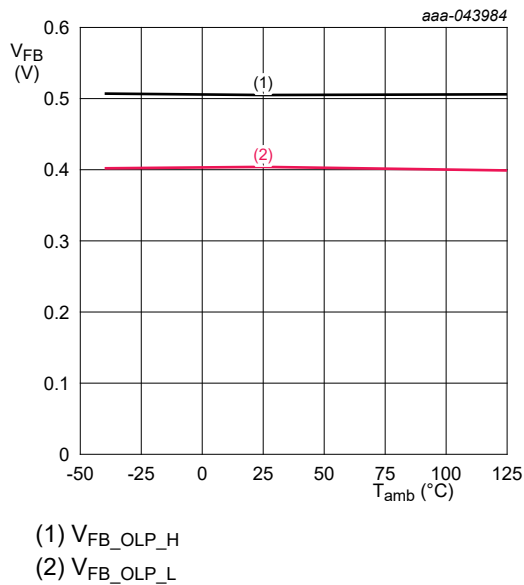


Fig. 16. V\_FB\_OLP\_H and V\_FB\_OLP\_L vs ambient temperature

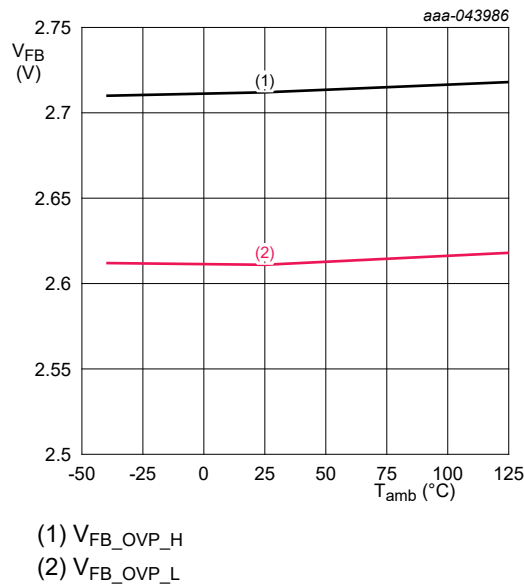


Fig. 17. V\_FB\_OVP\_H and V\_FB\_OVP\_L vs ambient temperature

## 13. Detailed Description

### 13.1. Overview

NEX83188 is a boost power factor correction (PFC) controller, which supports multi-mode (CCM/CrM/DCM) operation. Using the average current mode (ACM) based on time control technology, the device implements adaptive variable on time (VOT) control to achieve a high PF.

The device supports both MOSFET/D-mode GaN FET and E-mode GaN FET direct drive option. The maximum frequency can reach 135 kHz and 260 kHz respectively for MOSFET and E-mode GaN FET. In addition, it supports 2-level following boost function option.

The device supports line voltage feed forward and integrates a nonlinear transconductance error amplifier circuit to improve the large-scale dynamic response. It also integrates THD enhancement circuit to improve the current distortion.

### 13.2. Functional block diagram

Fig. 18 shows the functional block diagram of NEX83188:

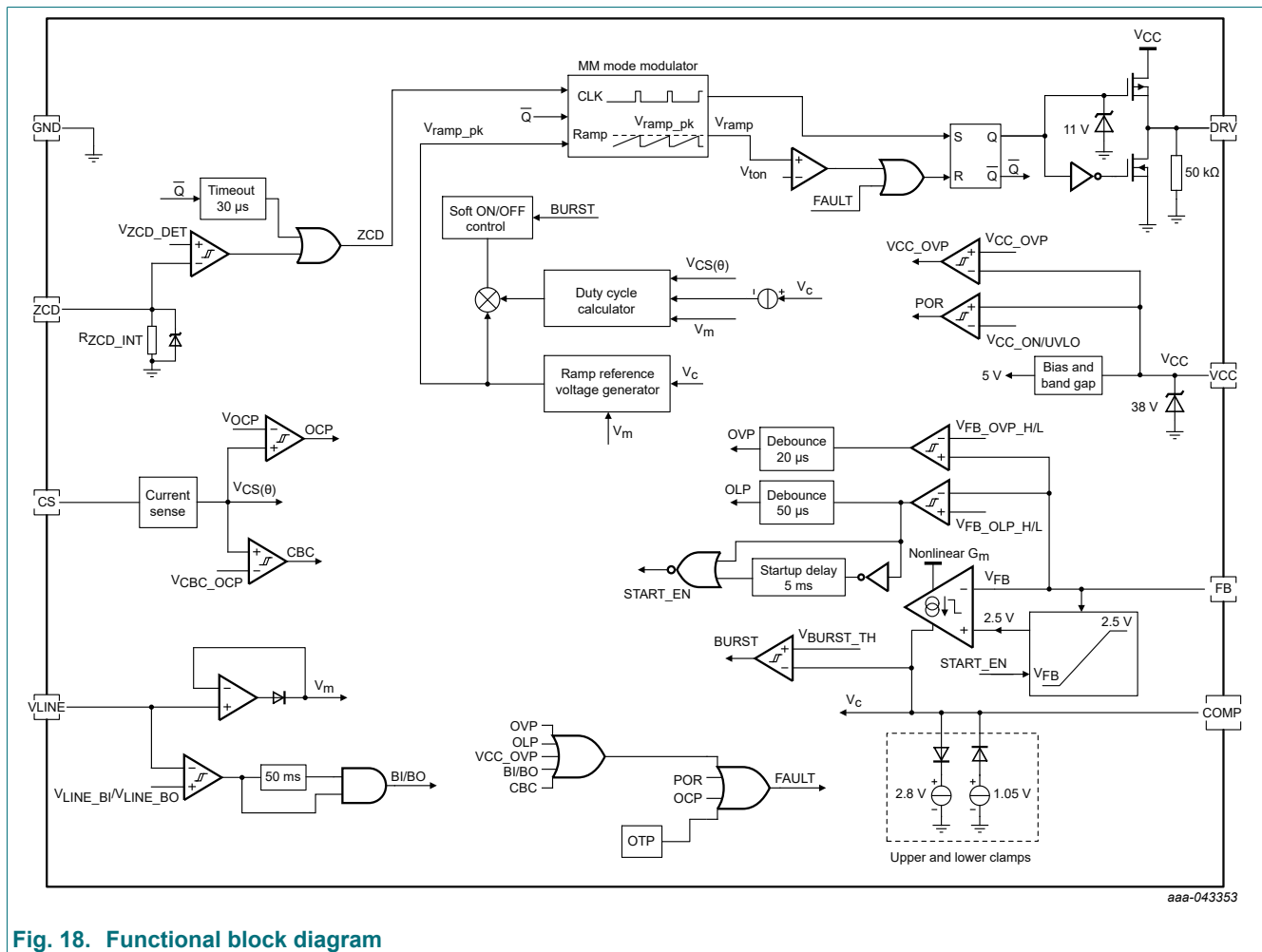


Fig. 18. Functional block diagram

### 13.3. Feature description

#### 13.3.1. ACM-based On time control

NEX83188 adopts a unified average current mode based on time control technology. Based on Volt-Second balance, the On time is given by equation (1).

$$t_{on}(\theta) = \left[ 1 - \frac{v_{in}(\theta)}{v_o} \right] T_s \quad (1)$$

Since the PFC converter can adjust the power factor to 1, the input impedance for PFC converter is

$$R_{in\_eq} = \frac{v_{in}(\theta)}{i_{in}(\theta)} \quad (2)$$

According to equation (2), the input current is always tracking the input voltage as long as  $R_{in\_eq}$  is constant. Combine equation (1) and (2), and the On time is given by

$$t_{on}(\theta) = \left[ 1 - \frac{R_{in\_eq} i_{in}(\theta)}{v_o} \right] T_s \quad (3)$$

According to equation (3), the On time is related to the input current (inductor current average value). When  $R_{in\_eq}$  is constant, the input current is always tracking the input voltage. If  $\frac{R_{in\_eq}}{v_o}$  is generated by the control loop and  $i_{in}(\theta)$  is the actual input current, the input current will automatically track the input voltage. According to the above analysis, the input current will auto-track the line voltage and achieve a high power factor. For CrM/DCM mode, the actual switching frequency  $f_{s\_act}$  will be smaller than  $1/t_s$ .

[Fig. 19](#) shows the control structure of ACM-based On time control method.

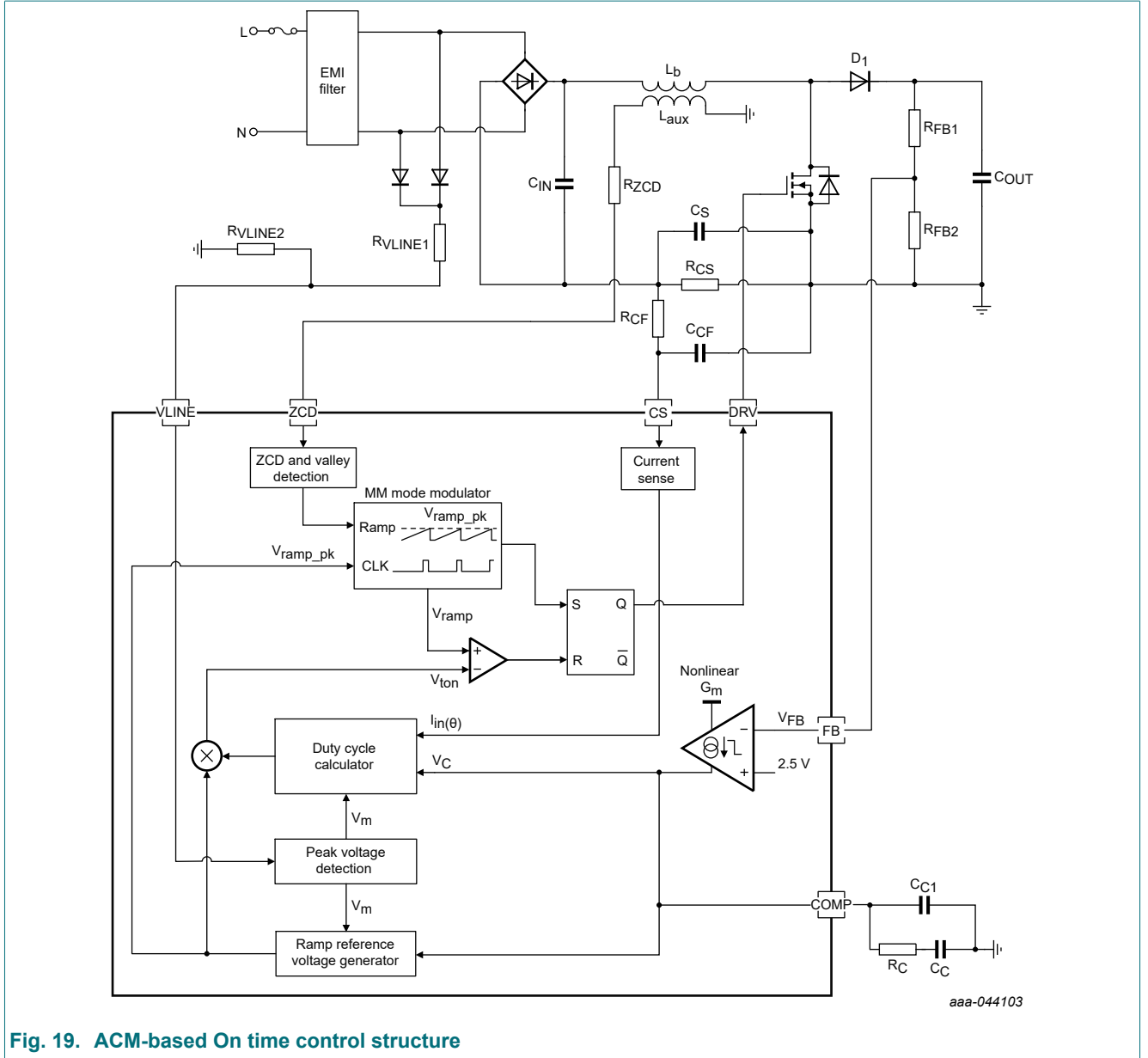


Fig. 19. ACM-based On time control structure

According to equation (3) and Fig. 19, based on the ACM control, the On time is given by

$$V_{ton}(\theta) = \left[ 1 - \frac{k_r^2 V_m^2 k V_{L_{av}}(\theta)}{V_C} \right] V_{ramp\_pk} \quad (4)$$

Where  $k$  is the gain of the analog multiplier,  $k_r$  is the division resistor ratio for line voltage peak value detection,  $V_m$  is the line voltage peak value. The control loop generates  $V_C$ , which can be seen as  $\frac{k_v k_r^2 V_m^2 R_{CS}}{R_{in\_eq}}$ , the On time is calculated by the actual input current which will track the input voltage. For MM mode, the ramp signal peak value is

$$V_{ramp\_pk} = V_{ramp\_pk\_ref} - k_{f\_MM} V_C \quad (5)$$

Where  $V_C$  is the control signal which range is from 0.8 V to 3.5 V.  $k_{f\_MM}$  is the gain of frequency fold back function, which is set as 0.167.  $V_{ramp\_pk\_ref}$  is the initial peak value of the ramp signal, which is set at 2.25 V.

According to equation (5), the range of  $V_{ramp\_pk}$  is from 1.67 V to 2.12 V. Assume that the maximum frequency is 135 kHz ( $V_{ramp\_pk} = 1.67$  V), the maximum frequency range is from 106 kHz to 135 kHz.

The input current under CrM mode is given by

## CCM/CrM/DCM multi-mode boost Power Factor Correction controller

$$I_{in} = \frac{\sqrt{2} v_{in\_rms} \sin(\theta) t_{on}}{2L_b} \quad (6)$$

Based on the Volt-Second balance, the  $t_{on}$  is given by

$$t_{on} = \frac{[v_o - v_{in}(\theta)] T_s}{v_o} \quad (7)$$

The inductor value sets the power above which the circuit will enter CCM. The boost inductor under CrM is given by

$$L_b = \frac{\eta v_{in\_rms}^2 (v_o - \sqrt{2} v_{in\_rms})}{2 v_o f_s P_o} \quad (8)$$

Based on the control method, the duty cycle in each half-line cycle is given by

$$\begin{cases} D(\theta) = \frac{v_{ton}(\theta)}{V_{ramp\_pk}} = 1 - \frac{k k_r^2 V_m^2 v_{i_{Lav}}(\theta)}{V_c} \\ V_{i_{Lav}}(\theta) = R_{cs} i_{Lav}(\theta) \end{cases} \quad (9)$$

Where  $k$  is the gain of the internal analog multiplier;  $k_r$  is the division resistor ratio for line voltage peak value detection;  $R_{cs}$  is the current sampling resistor;  $i_{Lav}(\theta)$  is the average inductor current, and  $V_m$  is the input peak voltage. Similar to the boost converter, based on the Volt-Second balance, the relationship between the input and output is given by

$$D(\theta) = 1 - \frac{v_{in}(\theta)}{v_o} = 1 - \frac{R_{in\_eq} i_{in}(\theta)}{v_o} \quad (10)$$

Where  $v_o$  is the real output voltage,  $i_{in}(\theta)$  is the input current,  $R_{in\_eq}$  is the input equivalent impedance. Based on the power balance and combined with equation (3), the equivalent input resistance and output power satisfy

$$R_{in\_eq} = \frac{\eta v_{in\_rms}^2}{P_o} = \frac{k v_o k_r^2 V_m^2 R_{cs}}{V_c} \quad (11)$$

Combining the above equations, we can get

$$P_o = \frac{\eta V_c}{2 k k_r^2 v_o R_{cs}} \quad (12)$$

Equation (12) shows the relation among output power  $P_o$ , control signal  $V_c$ , output voltage  $v_o$ , and current sense resistor  $R_{cs}$ , which determines the maximum output power in MM. Since the range of control signal  $V_c$  and multiplier gain are fixed internally, we can adjust the outside component value to change the maximum output power.

The recommended inductor value and current sense resistor for NEX83188 under different load conditions are shown in [Table 10](#).

**Table 10. Recommended inductor value and current sense resistor**

Maximum Output power (W)	Inductor value (μH)	Current sense resistor (mΩ)
330	400	45
480	300	28
600	220	23

### 13.3.2. Loop compensation

[Fig. 20](#) shows the small signal equivalent circuit of PFC converter, C is the output capacitor,  $R_{esr}$  is the series parasitic resistor, R is the load resistor.

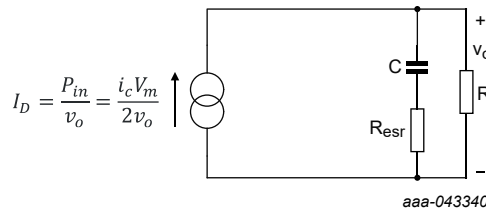


Fig. 20. Small signal equivalent circuit for PFC converter

Based on Fig. 20, the transfer function from  $V_c$  to  $v_o$  is given by

$$G_{iv}(s) = \frac{\hat{v}_o(s)}{\hat{v}_c(s)} = \frac{R}{2kk_r^2 v_o 2R_{cs}} \frac{sR_{esr}C + 1}{s(3R_{esr} + R)C + 3} \approx \frac{R}{6kk_r^2 v_o 2R_{cs}} \frac{1 + \frac{s}{\omega_z}}{1 + \frac{s}{\omega_p}} \quad (13)$$

There are 1 pole  $\omega_z = \frac{1}{R_{esr}C}$  and 1 zero  $\omega_p = \frac{3}{RC}$  for PFC converter. Fig. 21 shows the compensation network for NEX83188. The loop control of NEX83188 is based on nonlinear transconductance error amplifier described in Section 13.3.5. Based on the compensation network, the control loop transfer function is given by

$$G_{vv}(s) = \frac{\hat{v}_o(s)}{\hat{v}_c(s)} = \frac{R_{FB2}G_m}{R_{FB1} + R_{FB2}} \frac{sR_C C_C + 1}{sC_C(sR_C C_{C1} + 1)} \quad (C_C \gg C_{C1}) \quad (14)$$

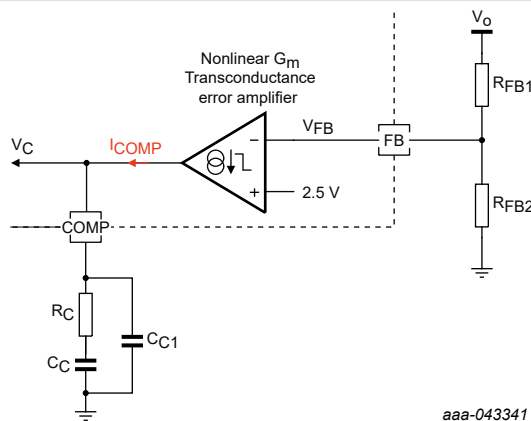


Fig. 21. Loop compensation network

According to the above analysis, we can design the compensation parameters using k-factor method. The recommended compensation parameters under different load conditions are shown in Table 11.

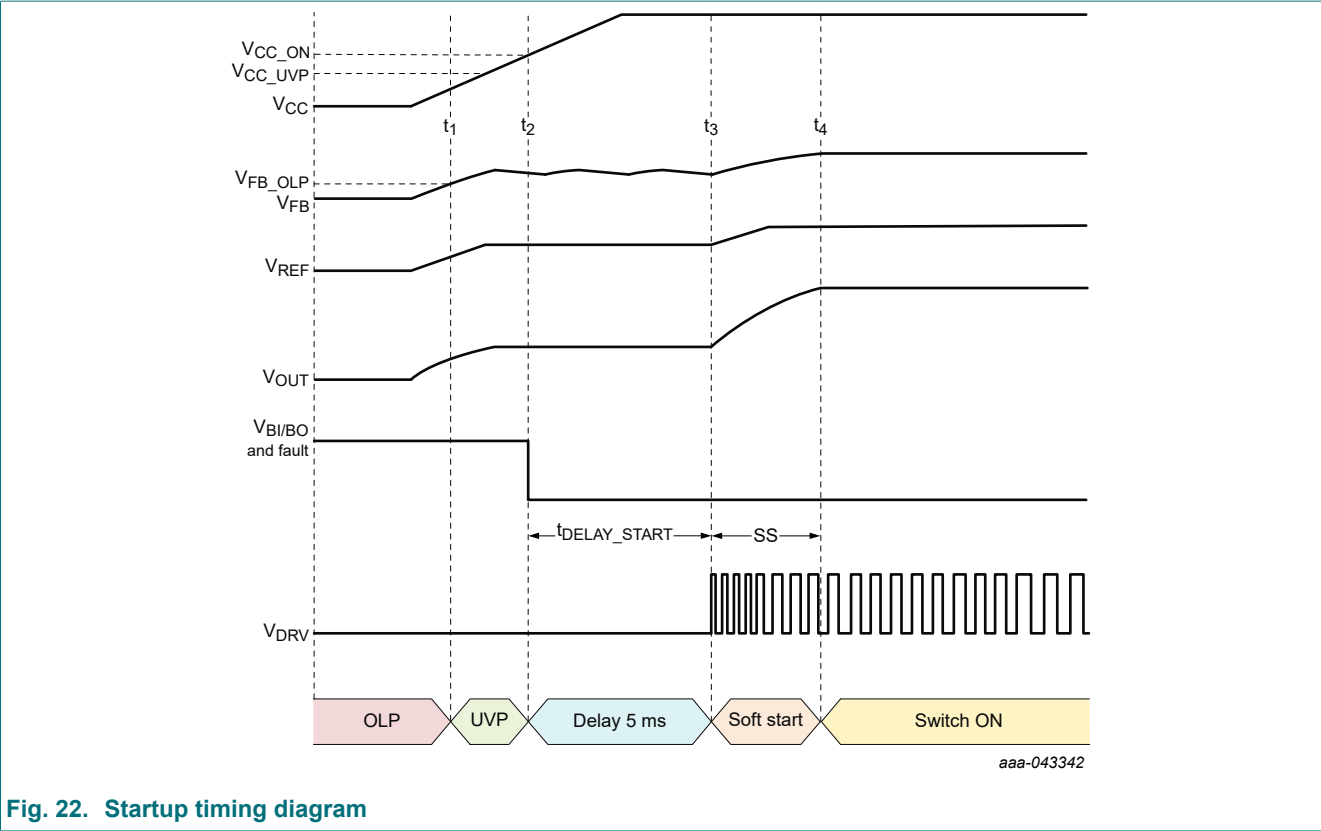
Table 11. Recommended compensation parameters

Maximum output power (W)	$R_C$ (kΩ)	$C_C$ (μF)	$C_{C1}$ (nF)
330	51	1	330
480	82	1	470
600	100	1.5	430

### 13.3.3. Startup during normal operations

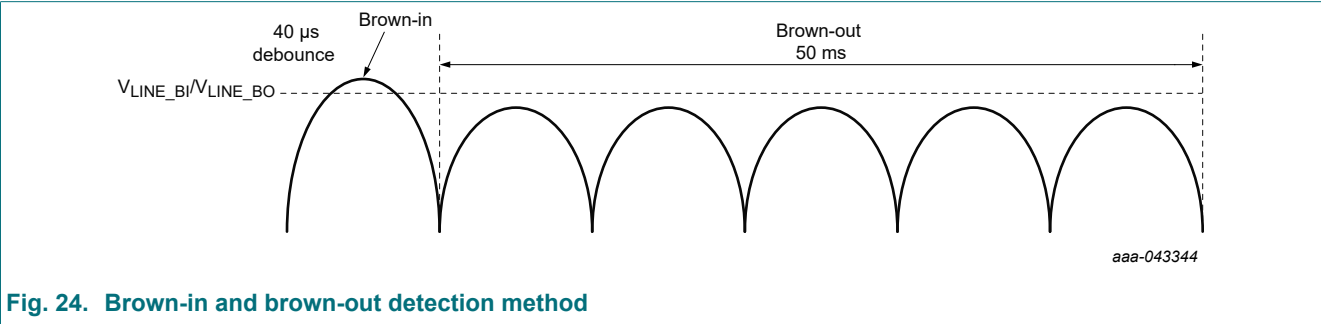
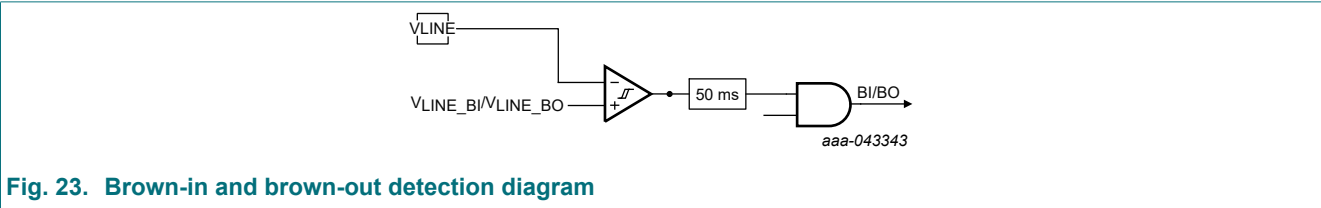
Fig. 22 shows the startup timing of NEX83188. The device is enabled when VCC is higher than the power on threshold  $V_{VCC\_ON}$  and disabled when VCC drops below the power-off (UVLO) threshold  $V_{VCC\_UVLO}$ .

Before VCC rises to  $V_{VCC\_ON}$ , the device is in a UVP or OLP state. After the device is powered on, it will check all the FAULT signals, including brown-in/brown-out and OLP protections. When  $V_{FB}$  is higher than the OLP threshold, the device will start a 5 ms delay and then enter the soft start state. During the soft start, the reference voltage rises from the current  $V_{FB}$  to 2.5 V and the output voltage slowly rises to the target voltage.



13.3.4. Brown-in and brown-out

The VLINE pin of NEX83188 supports brown-in and brown-out detection. When the line voltage is continuously higher than the brown-in threshold  $V_{VLINE\_BI}$  for a debounce time, it is considered that the line voltage is normally connected. When the line voltage drops continuously below the brown-out threshold  $V_{VLINE\_BO}$  for 50 ms, it is considered that the line voltage is abnormally connected. Fig. 23 and Fig. 24 show the brown-in/out detection diagram and method respectively.





### 13.3.5. Nonlinear transconductance error amplifier

To improve the dynamic of PFC converter, the device integrates a nonlinear transconductance error amplifier. Fig. 25 shows the nonlinear transconductance error amplifier output current varies with the feedback voltage. When the feedback voltage is lower than 2.1 V, the output current of error amplifier is clamped at 70  $\mu\text{A}$ .

- When the feedback voltage is between 2.1 V and 2.4 V, the equivalent transconductance is 300  $\mu\text{A/V}$ .
- When the feedback voltage is between 2.4 V and 2.6 V, the equivalent transconductance is 100  $\mu\text{A/V}$ .
- The equivalent transconductance will increase to 800  $\mu\text{A/V}$  while the feedback voltage is higher than 2.6 V.

The output current of error amplifier changes according to the feedback voltage, which will charge and discharge the compensation network quickly. This ensures that COMP voltage is quickly pulled down to prevent over-voltage protection (OVP) from being triggered.

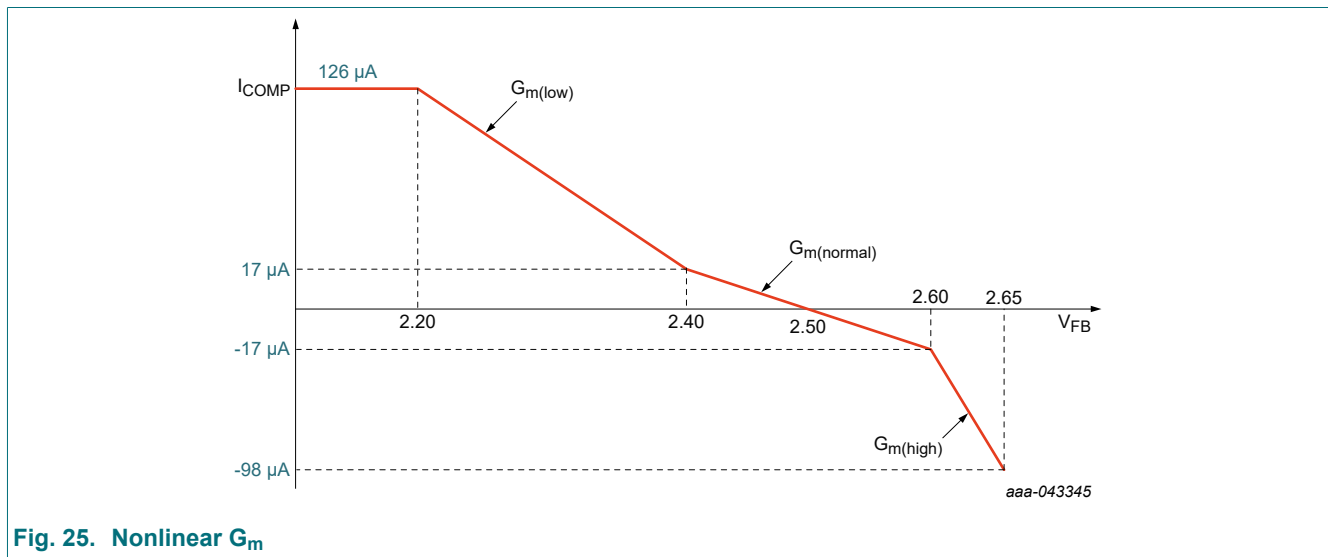


Fig. 25. Nonlinear  $G_{\text{m}}$

### 13.3.6. Burst mode with soft on or off

Fig. 26 shows the burst mode control diagram.

- When the output voltage is higher than the OVP threshold, the device will shut down the PWM signal until the OVP signal is released. The burst mode is implemented based on the control voltage  $V_{\text{COMP}}$ .
- When the control voltage  $V_{\text{COMP}}$  is lower than the burst mode threshold, the device will shut down the PWM signal with five soft-OFF pulses.
- When the control voltage  $V_{\text{COMP}}$  is higher than the burst mode threshold, the device will release the PWM signal with five soft-ON pulses.

This soft-ON/OFF control avoids abrupt inductor current changes and attenuates the acoustic noise accordingly. During the burst-off period, the device shuts down most of the internal block and ensures that the supply current is below  $I_{\text{Q}}$  (typically 460  $\mu\text{A}$ ).

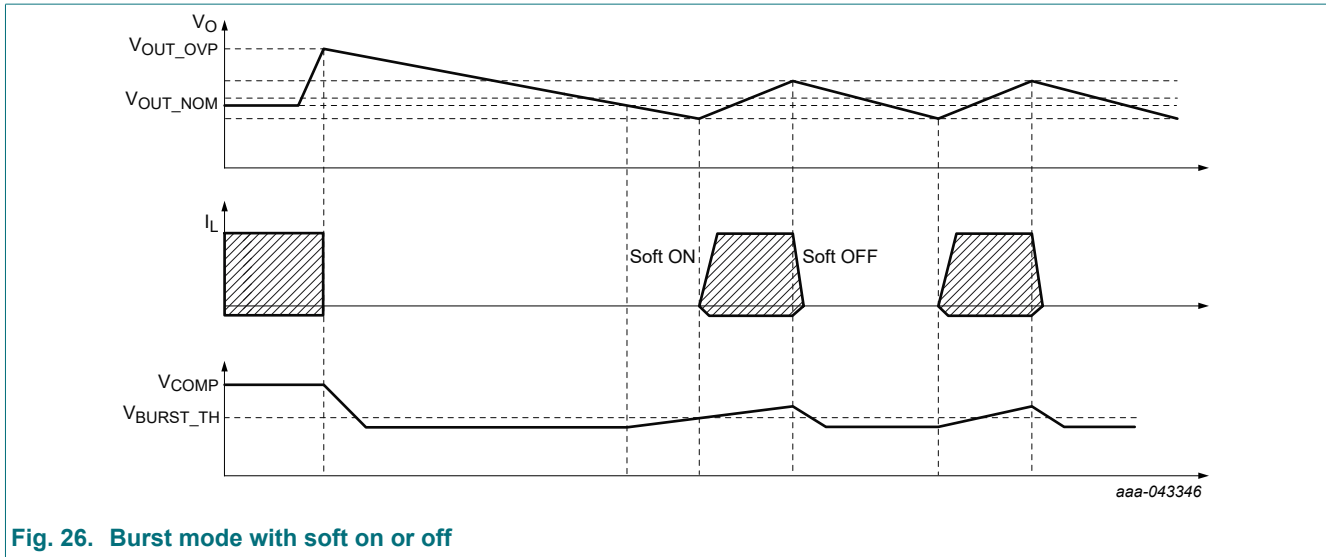


Fig. 26. Burst mode with soft on or off

### 13.3.7. Zero current detection and valley switching

The zero current detection and valley switching is detected by the auxiliary winding and is implemented by ZCD pin. Fig. 27 shows the structure of zero current detection and valley switching.

The voltage of ZCD pin is upper and lower clamped at 5.7 V and 0.5 V respectively. There are two steps of threshold voltage for ZCD detection, one is for detecting the demagnetization point and the other is for detecting the valley point.

- When the ZCD voltage is lower than the demagnetization threshold voltage  $V_{ZCD\_DETA}$ , it indicates the inductor current drops to zero.
- When the ZCD voltage is lower than the  $V_{ZCD\_DETT}$ , it means that the MOSFET drain voltage drops to the valley region.

After a delay time  $t_{ZCD\_DELAY}$ , the ZCD signal is generated and the MOSFET is turned on at the valley point. Fig. 28 shows the timing diagram of zero current detection and valley switching. The external ZCD resistor is given by

$$R_{ZCD} \geq \frac{V_{L\_aux\_max} - V_{ZCD\_clamp}}{I_{ZCD\_DET}} \quad (15)$$

Where  $V_{L\_aux\_max}$  is the maximum voltage on the auxiliary winding,  $V_{ZCD\_clamp}$  is the upper clamp voltage on ZCD pin,  $I_{ZCD\_DET}$  is the maximum current on ZCD pin.

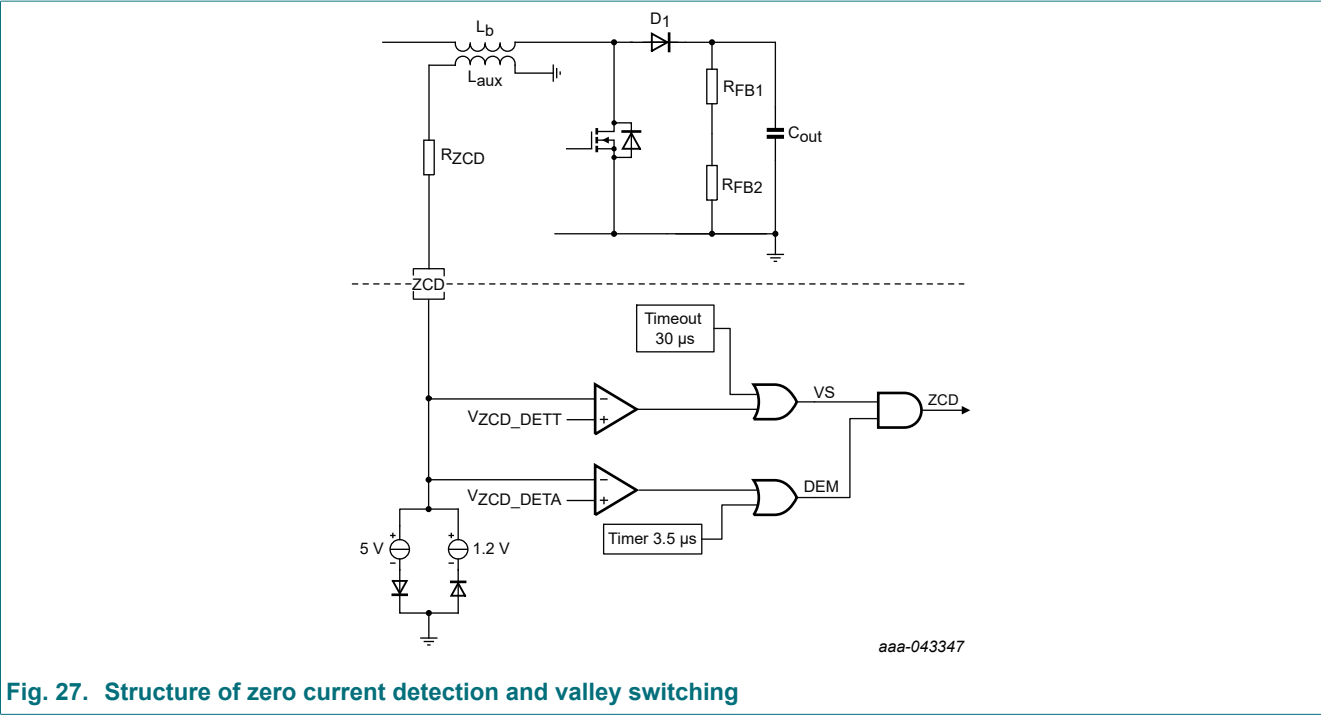


Fig. 27. Structure of zero current detection and valley switching

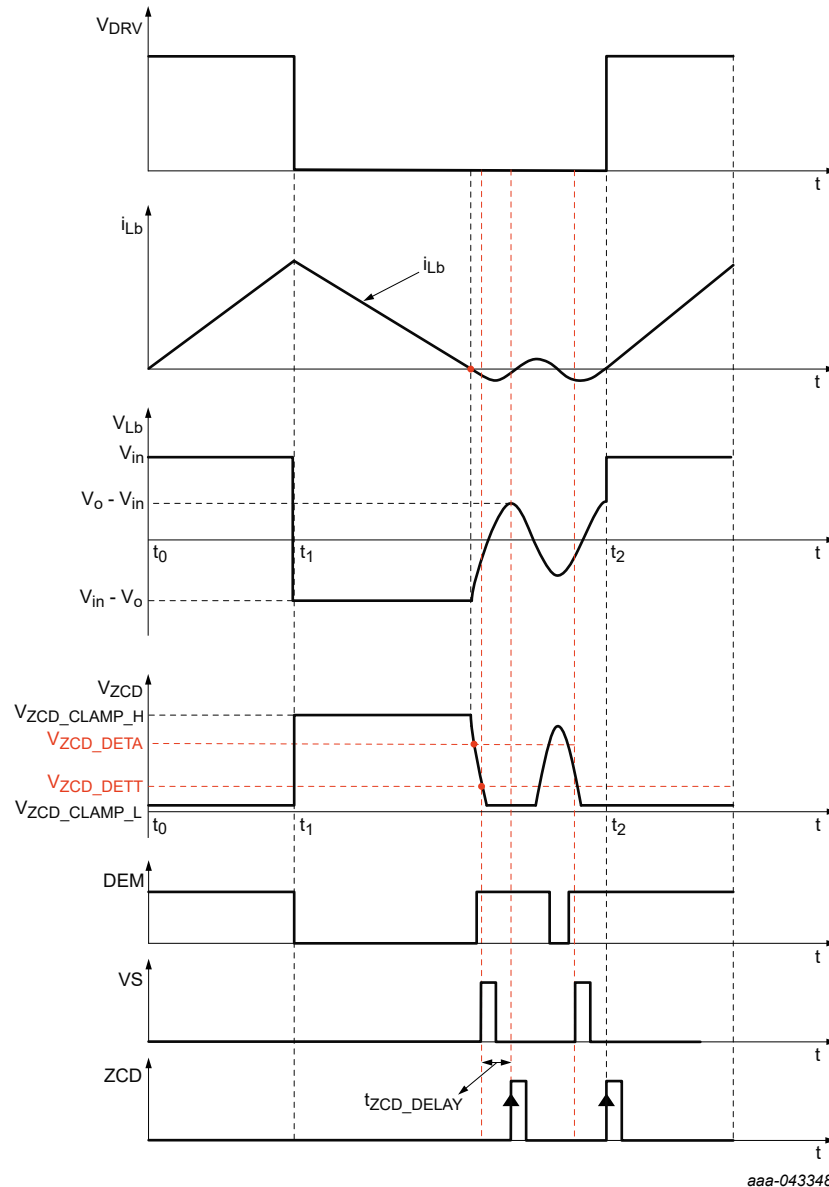


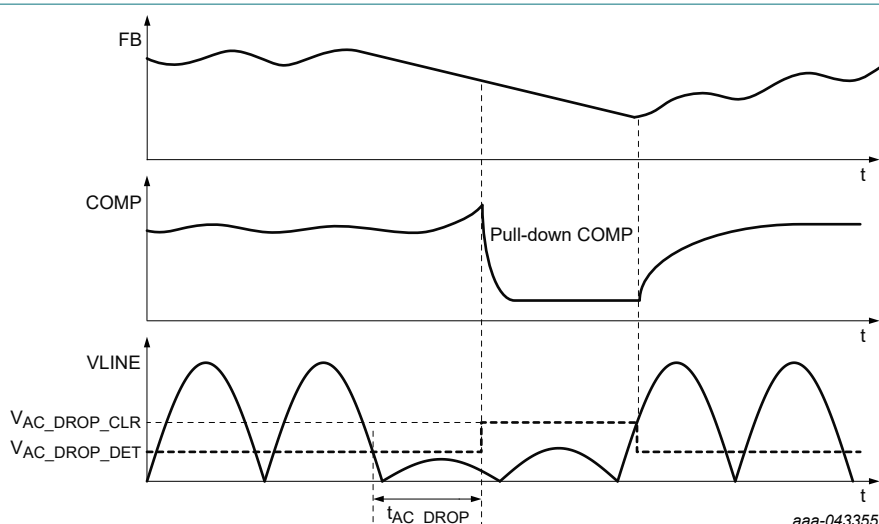
Fig. 28. Timing diagram of zero current detection and valley switching

### 13.3.8. AC-line drop detection

There is often the case that the AC-line voltage momentarily drops to zero or nearly zero, due to abnormal connection or transient abnormal events affecting the local AC-power distribution network.

During an AC-line dropout, the down-stream power stages depend on sufficient energy storage in the PFC output capacitance, which is sized to provide the ride-through energy for a specified hold-up time. Typically, while the PFC output voltage is falling, the voltage-loop error amplifier output will rise to maintain regulation.

Therefore, the excessive duty cycle is commanded when the AC-line voltage returns, and high peak current surges may saturate the boost inductor with possible overstress and audible noises.



**Fig. 29. AC-line dropout timing diagram**

NEX83288 supports an AC-line dropout detection function. When detecting the AC-line dropout event, the device will pull down the COMP voltage during the dropout and release the COMP voltage while the AC-line is resumed. If the VLINE voltage falls below  $V_{AC\_DROP\_DET}$  for longer than  $t_{AC\_DROP}$ , a dropout condition is detected, and the error amplifier output is turned off.

Besides, a pull-down current is applied to COMP to gently discharge the compensation network capacitors. In this way, when the AC-line voltage returns, the COMP voltage (and corresponding duty-cycle setting) remains very near to or even slightly below the level that it was before the dropout occurs. Current surges due to excessive duty-cycle, and their undesired attendant effects, are prevented.

### 13.3.9. Protections

[Fig. 30](#) shows the protections action flowchart. The device supports brown-in/out, overcurrent protection (OCP), inductor saturation protection (ISP), open-loop protection (OLP), VCC overvoltage protection (VCC OVP) and overtemperature protection (OTP). There are three different actions for different protections:

1. For brown-in/out, OLP, OTP, VCC OVP protections, when the fault signal is triggered, the device will shut down PWM output and then discharge VCC to  $V_{VCC\_OFF}$  and release. If the fault signal does not release, the PWM remains off state and the VCC will charge and discharge between  $V_{VCC\_ON}$  and  $V_{VCC\_OFF}$ . When the fault signal is released, the device will enter soft start after 5 ms.
2. For ISP/OCP, when the fault signal is triggered, the action is the same as [1](#). The only difference is the delay time from fault signal releases to soft start is increased to 200 ms.
3. For OVP, when the fault signal is triggered, the device will shut down the PWM and wait for the OVP signal to release. If the OVP is released, the PWM will be released.

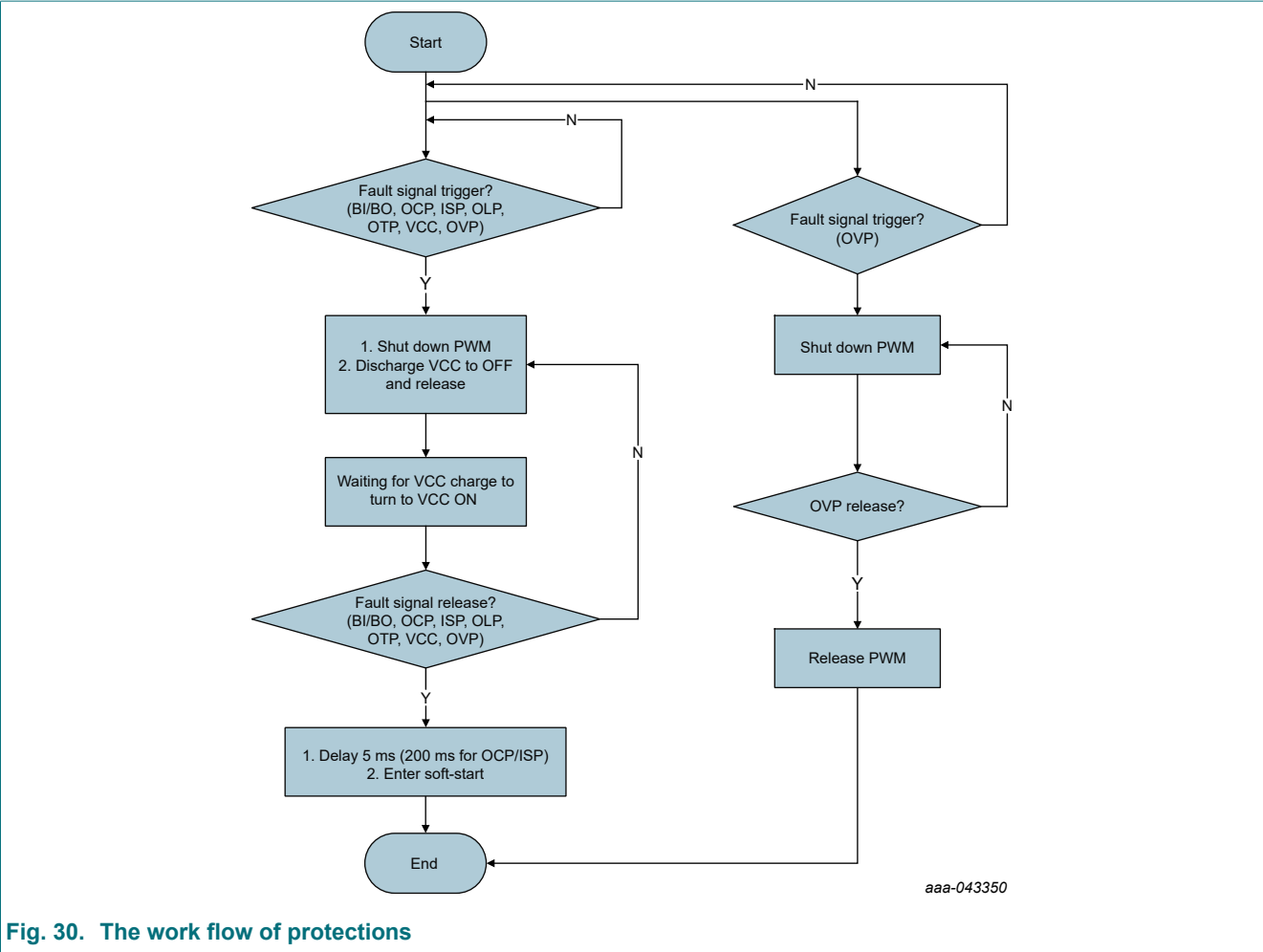
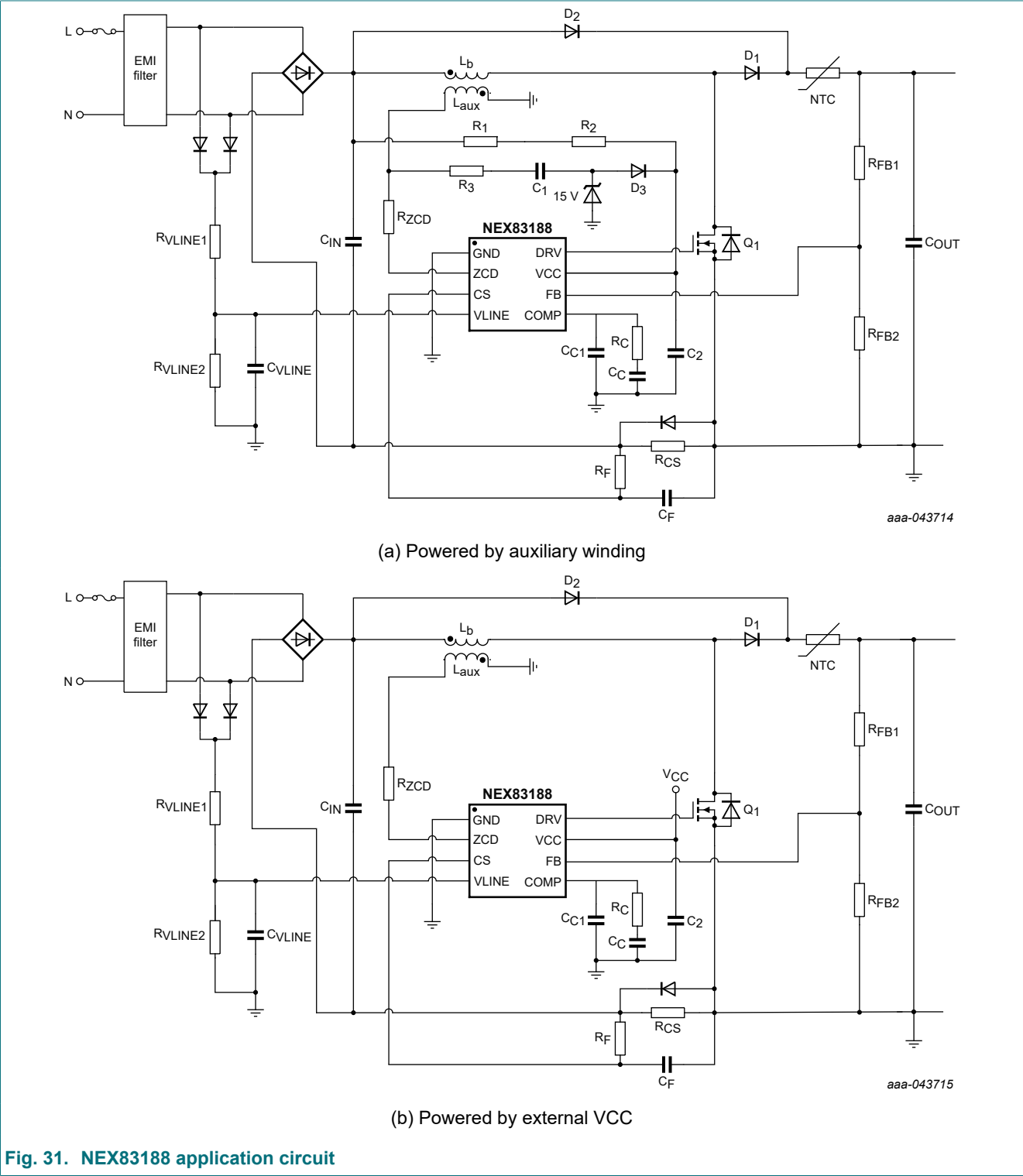


Fig. 30. The work flow of protections

14. Application information

14.1. Typical application



## 14.2. Design requirements

Table 12 shows the specifications of a 240 W system.

Table 12. System specifications

Symbol	Parameter	Conditions	Min	Typ	Max	Unit
<b>Input characteristics</b>						
$V_{AC(range)}$	AC voltage range		90	-	264	V
$f_{AC}$	AC voltage frequency		47	-	63	Hz
$V_{VCC\_ON}$	VCC on		-	12	-	V
$V_{VCC\_OFF}$	VCC off		-	9	-	V
$I_{IN}$	input current	input = 90 V <sub>ac</sub> ; full load = 240 W	-	2.78	-	A
<b>Output characteristics</b>						
$V_{OUT}$	output voltage		-	-	400	V
$P_L$	output power		-	-	240	W
$V_{O(ripple)}$	output ripple		-	12	-	V <sub>pp</sub>
<b>System characteristics</b>						
$\eta_{peak}$	peak efficiency		-	96	-	%

## 14.3. Power stage design

### 14.3.1. Rectifier bridge selection

The rectifier bridge is selected considering the maximum instantaneous voltage (the peak value of the line voltage) and the maximum input RMS current can be calculated by equation (16).

$$I_{AC\_MAX} = \frac{P_o}{\eta \times V_{AC\_MIN}} = 278 \text{ A} \quad (16)$$

The maximum peak input voltage is calculated by

$$V_{in\_max} = \sqrt{2} \times V_{AC\_MAX} = 373 \text{ V} \quad (17)$$

A standard 600 V/6 A rectifier bridge can be selected to provide enough margins.

### 14.3.2. Input capacitor selection

The input capacitor behind the rectifier bridge is used to provide a bypass path for the high switching frequency current, and to suppress the ripple on the rectified sinusoidal input voltage.

Generally, 5% to 20% ripple on the input capacitor may be expected. Since the energy stored in the input capacitor is approximately equal to the energy transferred to the load in each switching cycle, equation (18) can be obtained:

$$\frac{1}{2} C_{in} \left( V_{AC\_MIN} + \frac{1}{2} r V_{AC\_MIN} \right)^2 - \frac{1}{2} C_{in} \left( V_{AC\_MIN} - \frac{1}{2} r V_{AC\_MIN} \right)^2 = \frac{P_o}{2\pi f_s} \quad (18)$$

where  $r$  is the ripple coefficient. Based on equation (18), the input capacitor can be calculated with equation (19):

$$C_{in} = \frac{P_o}{2\pi f_s \times r \times V_{AC\_MIN}^2} = \frac{I_{AC\_MAX}}{2\pi f_s \times r \times V_{AC\_MIN}} \quad (19)$$

Select a capacitor with good high-frequency performance, such as a film capacitor. Assume that the ripple coefficient is 0.1, the input capacitor can be calculated with equation (20):



$$C_{in} = \frac{I_{AC\_MAX}}{2\pi f_s \times r \times V_{AC\_MIN}} = 0.49 \mu F \quad (20)$$

Two 0.33  $\mu F$  film capacitors with a 450 V voltage rating are recommended as the input capacitors because they provide high-frequency energy during the switching cycle.

#### 14.3.3. Boost inductor design

The boost inductor can be calculated with equation (21):

$$L_b = \frac{\eta V_{AC\_MIN}^2}{2k P_{of_s}} \left( 1 - \frac{\sqrt{2} V_{AC\_MIN}}{V_o} \right) \quad (21)$$

Where k is the inductor coefficient. For MM mode, k can be set as 0.25 to 0.45. Assume that k is 0.3, the inductor value is

$$L_b = \frac{\eta V_{AC\_MIN}^2}{2k P_{of_s}} \left( 1 - \frac{\sqrt{2} V_{AC\_MIN}}{V_o} \right) = 368 \mu H \quad (22)$$

The inductor value can be set as 360  $\mu H$ .

#### 14.3.4. MOSFET selection

The current rating of MOSFET is determined by the maximum RMS value of the current following through the MOSFET. To calculate the RMS current of MOSFET in each half line cycle, we need to calculate the RMS current of MOSFET in each switching cycle first.

For MM mode, the RMS current of MOSFET in each switching cycle is estimated with equation (23):

$$I_{QRMS\_MM}(\theta) = i_{in\_rms}(\theta) \sqrt{\frac{T_{on}}{T_s}} = i_{in\_rms}(\theta) \sqrt{1 - \frac{v_{in}(\theta)}{v_{out}}} \quad (23)$$

Based on equation (23), the RMS value of MOSFET in each half line cycle can be calculated with

$$I_{QRMS\_MM} = \sqrt{\frac{1}{\pi} \int_0^\pi \left[ i_{in\_rms}(\theta) \sqrt{1 - \frac{v_{in}(\theta)}{v_{out}}} \right]^2 d\theta} = \sqrt{2} i_{in\_rms} \sqrt{\frac{1}{\pi} \int_0^\pi \left( \sin(\theta)^2 - \frac{\sqrt{2} v_{in\_rms} \sin(\theta)^3}{v_{out}} \right) d\theta} \quad (24)$$

Simplify the formula to obtain equation (25):

$$I_{QRMS\_MM} = \sqrt{2} i_{in\_rms} \sqrt{\frac{1}{2} - \frac{4\sqrt{2} v_{in\_rms}}{3\pi v_{out}}} = i_{in\_rms} \sqrt{1 - \frac{8\sqrt{2} v_{in\_rms}}{3\pi v_{out}}} \quad (25)$$

The RMS current of MOSFET is

$$I_{QRMS\_MM} = I_{AC\_MAX} \sqrt{1 - \frac{8\sqrt{2} \times V_{AC\_MIN}}{3\pi \times v_{out}}} = 2375 A \quad (26)$$

#### 14.3.5. Boost diode selection

The RMS current of diode is calculated with

$$I_{DRMS\_MM}(\theta) = i_{in\_rms}(\theta) \sqrt{\frac{T_{off}}{T_s}} = i_{in\_rms}(\theta) \sqrt{\frac{v_{in}(\theta)}{v_{out}}} \quad (27)$$

Simplify the formula to obtain equation (28):

$$I_{DRMS\_MM} = \sqrt{2} i_{in\_rms} \sqrt{\frac{4\sqrt{2} v_{in\_rms}}{3\pi v_{out}}} = i_{in\_rms} \sqrt{\frac{8\sqrt{2} v_{in\_rms}}{3\pi v_{out}}} = 1.445 \text{ A} \quad (28)$$

For MM mode, fast recovery diodes typically have higher conduction loss but lower switching loss. Slow recovery diodes typically have lower conduction loss but higher switching loss. Maximum efficiency is achieved when the diode speed rating matches with the application. In this case, a boost diode with a fast recovery is recommended.

#### 14.3.6. Output capacitor selection

When selecting the output capacitor, we need to consider the following conditions: the output voltage ripple ( $V_{O\_pp}$ ), ripple current rating, and hold-up time. The output ripple is a function of the effective series resistance (ESR) of the output capacitor, the output voltage, and the line frequency ( $f_L$ ). Based on the energy balance, the energy on the output capacitor is given by

$$P_C(t) = v_{out} i_c(t) = P_{in}(t) - P_o = 2I_{in\_rms} V_{in\_rms} [\sin(\omega_L t)]^2 - P_o = 2P_o [\sin(\omega_L t)]^2 - P_o \quad (29)$$

Based on equation (29), the current flowing to the output capacitor is calculated by

$$i_c(t) = 2I_o [\sin(\omega_L t)]^2 - I_o = -I_o \cos(2\omega_L t) \quad (30)$$

Considering the ESR of output capacitor, the output ripple is calculated by

$$V_{o\_pp} = 2 \times \frac{P_o}{v_{out}} \times \sqrt{R_{esr}^2 + \frac{1}{(2 \times 2\pi f_L \times C_o)^2}} \quad (31)$$

In this case, the calculated ripple with the selected capacitor should be below 3% of the output voltage, and the ESR of the output capacitor is assumed to be 1  $\Omega$ .  $C_o$  can be calculated by

$$C_o \geq \frac{1}{2 \times 2\pi f_L \sqrt{\left(\frac{3\% \times v_{out}^2}{2 \times P_o}\right)^2 - R_{esr}^2}} = 160 \text{ } \mu\text{F} \quad (32)$$

In this example design, an aluminum electrolytic capacitor with specification of 180  $\mu\text{F}/450 \text{ V}$  is recommended.

The maximum RMS ripple current flowing in the output capacitor can be estimated with equation (33).

$$I_{o\_ripple\_max} = \sqrt{I_{DRMS\_MM}^2 - \left(\frac{P_o}{v_{out}}\right)^2} = 1.314 \text{ A} \quad (33)$$

This current flowing into the output capacitor is made up of a double line frequency ripple component ( $2 \times f_L$ ) and a switching frequency component ( $f_{sw}$ ), calculated with equation (34) and equation (35), respectively.

$$I_{o\_ripple\_100\text{Hz}} = \frac{P_o}{\sqrt{2} v_{out}} = 0.424 \text{ A} \quad (34)$$

$$I_{o\_ripple\_fsw} = \sqrt{I_{o\_ripple\_max}^2 - I_{o\_ripple\_100\text{Hz}}^2} = 1.243 \text{ A} \quad (35)$$

The capacitor should be chosen so that the hold-up time satisfies the relationship calculated with equation (36):

$$C_o = \frac{2 \times P_o \times t_{hold}}{\eta \times (v_{out}^2 - v_{out\_hold}^2)} \quad (36)$$

Where  $V_{OUT}$  is the minimum output voltage under normal operating conditions, and  $v_{OUT\_hold}$  is the required minimum operating output voltage to supply the second stage DC-DC converter when the line voltage is shut down.

## 14.4. Control circuit design

#### 14.4.1. FB section

The internal reference voltage  $V_{REF}$  is 2.5 V (typical), based on the internal reference voltage, the resistor division ratio is calculated with

$$\frac{R_{FBDWN}}{R_{FBUP} + R_{FBDWN}} \times v_{out} = V_{REF} \quad (37)$$

Since the division resistor will affect the standby power, the selection of resistance value needs to consider standby power consumption. It is recommended that the upper resistor is set as 6.6 mΩ. Based on equation (37), the lower resistor can be calculated with

$$R_{FBDWN} = \frac{V_{REF}}{v_{out} - V_{REF}} \times R_{FBUP} \quad (38)$$

#### 14.4.2. VLINE section

Considering the brown-in and brown-out threshold, the resistors on VLINE pin can be calculated with equation (39).

$$\frac{R_{LDWN}}{R_{LUP} + R_{LDWN}} \times V_{in\_pk} = V_{BRI} \quad (39)$$

Since the division resistors also affect the standby power, the selection of resistance value needs to consider standby power consumption. It is recommended that the upper resistor is set as 6.6 mΩ. Based on equation (40), the lower resistor can be calculated with

$$R_{LDWN} = \frac{V_{BRI}}{V_{in\_pk} - V_{BRI}} \times R_{LUP} \quad (40)$$

#### 14.4.3. ZCD section

The external ZCD resistor is given by

$$R_{ZCD} \geq \frac{V_{L\_aux\_max} - V_{ZCD\_clamp}}{I_{ZCD\_DET}} \quad (41)$$

Where  $V_{L\_aux\_max}$  is the maximum voltage on the auxiliary winding,  $V_{ZCD\_clamp}$  is the upper clamp voltage on ZCD pin,  $I_{ZCD\_DET}$  is the maximum current on ZCD pin.

#### 14.4.4. CS section

CS is used for CBC and control. The current flowing through the MOSFET should be below the CBC threshold. The CS resistor value can be estimated with equation (42):

$$R_{CS} \leq \frac{V_{CBC}}{2\sqrt{2} \times I_{AC\_MAX}} \quad (42)$$

In this case, the calculated CS resistor is 63.6 mΩ, the resistor can be selected as 50 mΩ. To suppress the spike and improve the control reliability, a low pass filter (220 Ω + 220 pF) is recommended to be added on CS.

#### 14.4.5. COMP section

The compensation parameters can be calculated by the k-factor method. The k-factor method design steps are as follows:

## CCM/CrM/DCM multi-mode boost Power Factor Correction controller

1. For maximum phase Boost at the gain cross-over frequency, compensator design proceeds by placing the pole and zero an equal distance above and below the gain cross-over frequency ( $f_c$ ) on the bode plot. That is

$$\begin{cases} f_{z1} = \frac{f_c}{k} \\ f_{p1} = f_c \times k \end{cases} \quad (43)$$

2. The system phase at the gain cross-over frequency is given by

$$\phi_{PS} = \arctan\left(\frac{f_c}{f_z}\right) - \arctan\left(\frac{f_c}{f_p}\right) \quad (44)$$

Based on equation (43) and (44), the open loop transfer function is

$$G_{iv}(s) G_{vv}(s) = \frac{R}{6kk_r^2 v_o 2R_{CS}} \frac{R_{FB2} G_m}{R_{FB1} + R_{FB2}} \frac{1 + \frac{s}{\omega_z}}{1 + \frac{s}{\omega_p}} \frac{1 + \frac{s}{\omega_{z1}}}{sC_C \left(1 + \frac{s}{\omega_{p1}}\right)} \quad (45)$$

Where  $\omega_{z1} = 2\pi f_{z1} = \frac{1}{R_C C_C}$  and  $\omega_{p1} = 2\pi f_{p1} = \frac{1}{R_C C_{C1}}$ .

The compensator expected phase boost of the compensator is given by

$$\phi_{boost} = \phi_{PM} - \phi_{PS} - \frac{\pi}{2} = \arctan\left(\frac{f_c}{f_{z1}}\right) - \arctan\left(\frac{f_c}{f_{p1}}\right) = \arctan(k) - \arctan\left(\frac{1}{k}\right) \quad (46)$$

Furthermore, since  $\arctan(k) + \arctan\left(\frac{1}{k}\right) = \frac{\pi}{2}$ ,  $k$  can be derived from equation (47)

$$k = \tan\left(\frac{\phi_{PM} - \phi_{PS}}{2}\right) \quad (47)$$

3.  $R_C$ ,  $C_C$  and  $C_{C1}$  are calculated by the system gain at cross over frequency:

$$\begin{cases} C_C = \frac{R}{6kk_r^2 v_o 2R_{CS}} \frac{R_{FB2} G_m}{R_{FB1} + R_{FB2}} \frac{k}{2\pi f_c} \sqrt{\frac{1 + \left(\frac{f_c}{f_z}\right)^2}{1 + \left(\frac{f_c}{f_p}\right)^2}} \\ R_C = \frac{k}{2\pi f_c C_C} \\ C_{C1} = \frac{1}{2\pi k f_c R_C} \end{cases} \quad (48)$$

Select the appropriate gain cross-over frequency  $f_c$  ( $< 20$  Hz) and phase margin  $\phi_{PM}$  ( $\geq 65^\circ$ ), the compensator parameters can be calculated by equation (48). In this case, the recommended compensation parameters are  $C_C = 1 \mu\text{F}$ ,  $R_C = 33 \text{ k}\Omega$ ,  $C_{C1} = 220 \text{ nF}$ .

15. Package outline

Plastic, small outline package; 8 leads; 1.27mm pitch; 4.9 mm x 3.9 mm x 1.75mm bodySOT96-2

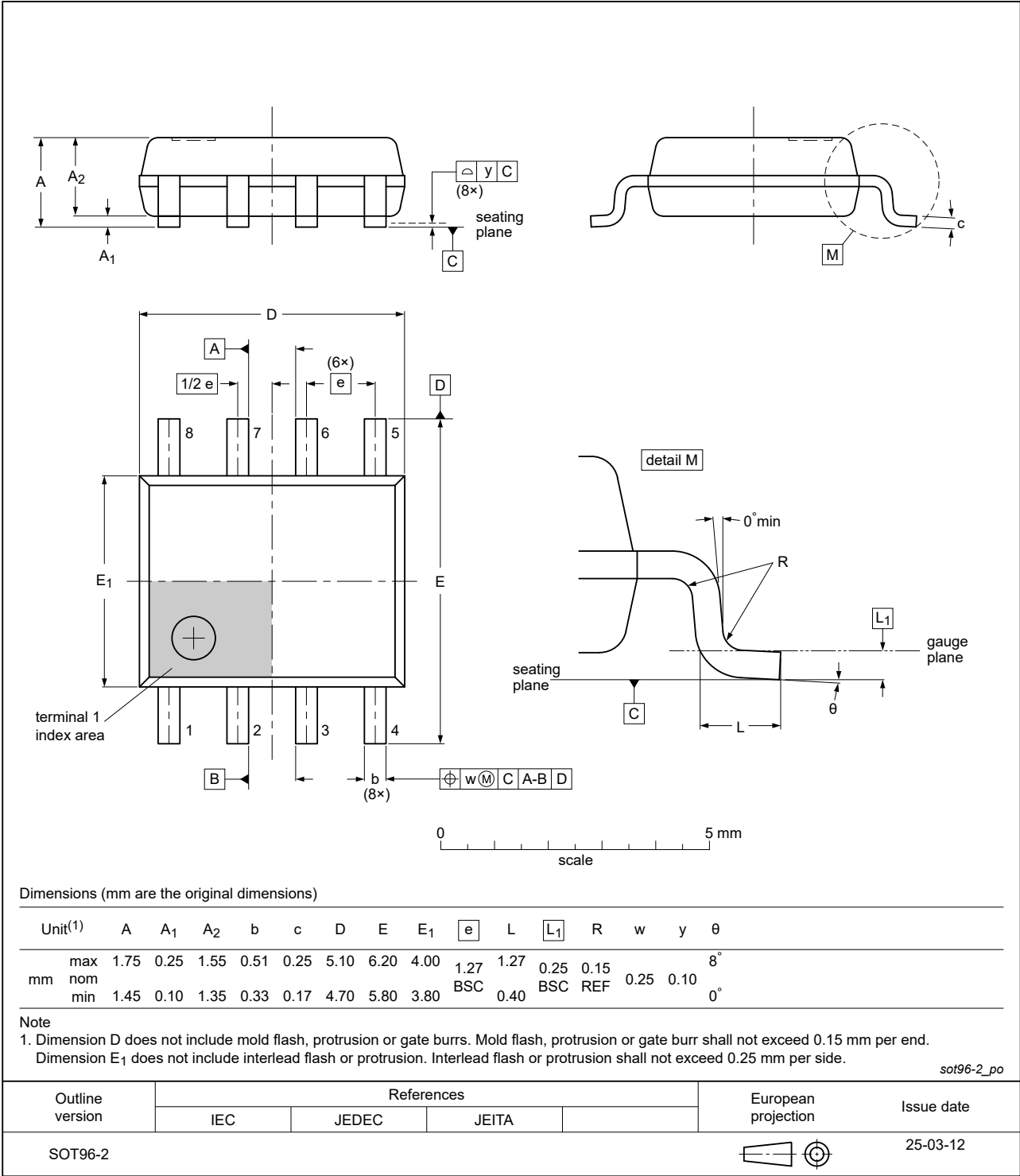


Fig. 32. Package outline SOT96-2 (SO8)

16. Abbreviations

Table 13. Abbreviations

Acronym	Description
AC	Alternating Current
ACM	Average Current Mode
ANSI	American National Standards Institute
BI	Brown-in
BO	Brown-out
CCM	Continuous Conduction Mode
CDM	Charged Device Model
CrM	Critical Conduction Mode
COT	Constant On Time
DC	Direct Current
DCM	Discontinuous Conduction Mode
EMI	ElectroMagnetic Interference
ESD	ElectroStatic Discharge
ESDA	ElectroStatic Discharge Association
GaN	Gallium Nitride
HBM	Human Body Model
HEMT	High Electron Mobility Transistor
IC	Integrated Circuit
ISP	Inductor Saturation Protection
JEDEC	Joint Electron Device Engineering Council
LCD	Liquid Crystal Display
MOSFET	Metal-Oxide-Semiconductor Field-Effect Transistor
OCP	OverCurrent Protection
OLP	Open Loop Protection
OPP	OverPower Protection
OTP	OverTemperature Protection
OVP	OverVoltage Protection
PFC	Power Factor Correction
PWM	Pulse-Width Modulation
THD	Total Harmonic Distortion
TM	Transition Mode
UVLO	Under-Voltage LockOut
UVP	UnderVoltage Protection
VOT	Variable On Time

## 17. Revision history

Table 14. Revision history

Document ID	Release date	Data sheet status	Change notice	Supersedes
NEX83188 v. 1.1	20250916	Product data sheet	-	NEX83188 v. 1
Modifications:	<ul style="list-style-type: none"><li>• <a href="#">Fig. 18</a>: Functional block diagram updated.</li><li>• <a href="#">Table 12</a>: The symbol of peak efficiency updated.</li><li>• <a href="#">Fig. 32</a>: Package outline drawing updated.</li></ul>			
NEX83188 v. 1	20250821	Product data sheet	-	-

## 18. Legal information

### Data sheet status

Document status [1][2]	Product status [3]	Definition
Objective [short] data sheet	Development	This document contains data from the objective specification for product development.
Preliminary [short] data sheet	Qualification	This document contains data from the preliminary specification.
Product [short] data sheet	Production	This document contains the product specification.

- [1] Please consult the most recently issued document before initiating or completing a design.
- [2] The term 'short data sheet' is explained in section "Definitions".
- [3] The product status of device(s) described in this document may have changed since this document was published and may differ in case of multiple devices. The latest product status information is available on the internet at <https://www.nexperia.com>.

### Definitions

**Draft** — The document is a draft version only. The content is still under internal review and subject to formal approval, which may result in modifications or additions. Nexperia does not give any representations or warranties as to the accuracy or completeness of information included herein and shall have no liability for the consequences of use of such information.

**Short data sheet** — A short data sheet is an extract from a full data sheet with the same product type number(s) and title. A short data sheet is intended for quick reference only and should not be relied upon to contain detailed and full information. For detailed and full information see the relevant full data sheet, which is available on request via the local Nexperia sales office. In case of any inconsistency or conflict with the short data sheet, the full data sheet shall prevail.

**Product specification** — The information and data provided in a Product data sheet shall define the specification of the product as agreed between Nexperia and its customer, unless Nexperia and customer have explicitly agreed otherwise in writing. In no event however, shall an agreement be valid in which the Nexperia product is deemed to offer functions and qualities beyond those described in the Product data sheet.

### Disclaimers

**Limited warranty and liability** — Information in this document is believed to be accurate and reliable. However, Nexperia does not give any representations or warranties, expressed or implied, as to the accuracy or completeness of such information and shall have no liability for the consequences of use of such information. Nexperia takes no responsibility for the content in this document if provided by an information source outside of Nexperia.

In no event shall Nexperia be liable for any indirect, incidental, punitive, special or consequential damages (including - without limitation - lost profits, lost savings, business interruption, costs related to the removal or replacement of any products or rework charges) whether or not such damages are based on tort (including negligence), warranty, breach of contract or any other legal theory.

Notwithstanding any damages that customer might incur for any reason whatsoever, Nexperia's aggregate and cumulative liability towards customer for the products described herein shall be limited in accordance with the Terms and conditions of commercial sale of Nexperia.

**Right to make changes** — Nexperia reserves the right to make changes to information published in this document, including without limitation specifications and product descriptions, at any time and without notice. This document supersedes and replaces all information supplied prior to the publication hereof.

**Suitability for use** — Nexperia products are not designed, authorized or warranted to be suitable for use in life support, life-critical or safety-critical systems or equipment, nor in applications where failure or malfunction of an Nexperia product can reasonably be expected to result in personal

injury, death or severe property or environmental damage. Nexperia and its suppliers accept no liability for inclusion and/or use of Nexperia products in such equipment or applications and therefore such inclusion and/or use is at the customer's own risk.

**Quick reference data** — The Quick reference data is an extract of the product data given in the Limiting values and Characteristics sections of this document, and as such is not complete, exhaustive or legally binding.

**Applications** — Applications that are described herein for any of these products are for illustrative purposes only. Nexperia makes no representation or warranty that such applications will be suitable for the specified use without further testing or modification.

Customers are responsible for the design and operation of their applications and products using Nexperia products, and Nexperia accepts no liability for any assistance with applications or customer product design. It is customer's sole responsibility to determine whether the Nexperia product is suitable and fit for the customer's applications and products planned, as well as for the planned application and use of customer's third party customer(s). Customers should provide appropriate design and operating safeguards to minimize the risks associated with their applications and products.

Nexperia does not accept any liability related to any default, damage, costs or problem which is based on any weakness or default in the customer's applications or products, or the application or use by customer's third party customer(s). Customer is responsible for doing all necessary testing for the customer's applications and products using Nexperia products in order to avoid a default of the applications and the products or of the application or use by customer's third party customer(s). Nexperia does not accept any liability in this respect.

**Limiting values** — Stress above one or more limiting values (as defined in the Absolute Maximum Ratings System of IEC 60134) will cause permanent damage to the device. Limiting values are stress ratings only and (proper) operation of the device at these or any other conditions above those given in the Recommended operating conditions section (if present) or the Characteristics sections of this document is not warranted. Constant or repeated exposure to limiting values will permanently and irreversibly affect the quality and reliability of the device.

**Terms and conditions of commercial sale** — Nexperia products are sold subject to the general terms and conditions of commercial sale, as published at <http://www.nexperia.com/profile/terms>, unless otherwise agreed in a valid written individual agreement. In case an individual agreement is concluded only the terms and conditions of the respective agreement shall apply. Nexperia hereby expressly objects to applying the customer's general terms and conditions with regard to the purchase of Nexperia products by customer.

**No offer to sell or license** — Nothing in this document may be interpreted or construed as an offer to sell products that is open for acceptance or the grant, conveyance or implication of any license under any copyrights, patents or other industrial or intellectual property rights.

**Export control** — This document as well as the item(s) described herein may be subject to export control regulations. Export might require a prior authorization from competent authorities.

**Non-automotive qualified products** — Unless this data sheet expressly states that this specific Nexperia product is automotive qualified, the product is not suitable for automotive use. It is neither qualified nor tested in accordance with automotive testing or application requirements. Nexperia accepts no liability for inclusion and/or use of non-automotive qualified products in automotive equipment or applications.

In the event that customer uses the product for design-in and use in automotive applications to automotive specifications and standards, customer (a) shall use the product without Nexperia's warranty of the product for such automotive applications, use and specifications, and (b) whenever customer uses the product for automotive applications beyond Nexperia's specifications such use shall be solely at customer's own risk, and (c) customer fully indemnifies Nexperia for any liability, damages or failed product claims resulting from customer design and use of the product for automotive applications beyond Nexperia's standard warranty and Nexperia's product specifications.

**Translations** — A non-English (translated) version of a document is for reference only. The English version shall prevail in case of any discrepancy between the translated and English versions.

### Trademarks

Notice: All referenced brands, product names, service names and trademarks are the property of their respective owners.



## Contents

<b>1. General description.....</b>	<b>1</b>	<b>16. Abbreviations.....</b>	<b>30</b>
<b>2. Features and benefits.....</b>	<b>1</b>	<b>17. Revision history.....</b>	<b>31</b>
<b>3. Applications.....</b>	<b>1</b>	<b>18. Legal information.....</b>	<b>32</b>
<b>4. Ordering information.....</b>	<b>2</b>		
<b>5. Marking.....</b>	<b>2</b>		
<b>6. Pin configuration and description.....</b>	<b>2</b>		
6.1. Pin configuration.....	2		
6.2. Pin description.....	2		
<b>7. Limiting values.....</b>	<b>3</b>		
<b>8. ESD ratings.....</b>	<b>3</b>		
<b>9. Recommended operating conditions.....</b>	<b>3</b>		
<b>10. Thermal characteristics.....</b>	<b>3</b>		
<b>11. Electrical characteristics.....</b>	<b>4</b>		
<b>12. Typical characteristics.....</b>	<b>7</b>		
<b>13. Detailed Description.....</b>	<b>11</b>		
13.1. Overview.....	11		
13.2. Functional block diagram.....	11		
13.3. Feature description.....	12		
13.3.1. ACM-based On time control.....	12		
13.3.2. Loop compensation.....	14		
13.3.3. Startup during normal operations.....	15		
13.3.4. Brown-in and brown-out.....	16		
13.3.5. Nonlinear transconductance error amplifier.....	17		
13.3.6. Burst mode with soft on or off.....	17		
13.3.7. Zero current detection and valley switching.....	18		
13.3.8. AC-line drop detection.....	20		
13.3.9. Protections.....	21		
<b>14. Application information.....</b>	<b>23</b>		
14.1. Typical application.....	23		
14.2. Design requirements.....	24		
14.3. Power stage design.....	24		
14.3.1. Rectifier bridge selection.....	24		
14.3.2. Input capacitor selection.....	24		
14.3.3. Boost inductor design.....	25		
14.3.4. MOSFET selection.....	25		
14.3.5. Boost diode selection.....	25		
14.3.6. Output capacitor selection.....	26		
14.4. Control circuit design.....	26		
14.4.1. FB section.....	27		
14.4.2. VLINE section.....	27		
14.4.3. ZCD section.....	27		
14.4.4. CS section.....	27		
14.4.5. COMP section.....	27		
<b>15. Package outline.....</b>	<b>29</b>		

© Nexperia B.V. 2025. All rights reserved

For more information, please visit: <http://www.nexperia.com>

For sales office addresses, please send an email to: [salesaddresses@nexperia.com](mailto:salesaddresses@nexperia.com)

Date of release: 16 September 2025